

Proposal to the Senate Academic Organization and Structure Committee
(SAOSC) for the

University of Kentucky
Center for the Environment

Submitted By:

Erin N. Haynes, Kurt W. Deuschle Professor in Preventive Medicine and Environmental Health
Chair, Department of Epidemiology & Department of Preventive Medicine and Environmental
Health
Deputy Director, NIEHS Center for Appalachian Research in Environmental Sciences
(UK-CARES)
College of Public Health
University of Kentucky
Lexington, KY 40536

Table of Contents

- 1) What is the impetus for the proposed change?
- 2) What are the benefits and weaknesses of the proposed unit with specific emphasis on the academic merits for the proposed change?
- 3) Describe the organization of the current structure and how the proposed structure will be different and better. Current and proposed organizational charts are often helpful in illustrating reporting lines.
- 4) How does the change fit with department, college, and/or university objectives and priorities?
- 5) How does this change better position the proposers relative to state and national peers, as well as University Benchmark Institutions? How does the change help UK meet the goals of its strategic plan?
- 6) Who are the key personnel associated with the proposed unit? Provide qualifications of these personnel in a brief form. A complete curriculum vitae for each person is not needed, although pertinent information in tabular format is helpful.
- 7) Discuss leadership and selection process for appointing a chair, a director, or interim leader and search process, etc.
- 8) What is the function of the faculty/staff associated with the proposed change and how is that relationship defined? Discuss DOE, adjunct, full-time, voting rights, etc.
- 9) Will the proposed change involve multiple schools or colleges?
- 10) If the proposed change will involve transferring personnel from one unit to another, provide evidence that the donor unit is willing and able to release the personnel.
- 11) What is the arrangement of faculty associated with the proposed change and how is that relationship defined? Discuss faculty DOE and status as adjunct, tenure track, or tenured. Describe the level of faculty input in the policy-making process including voting rights and advisory.
- 12) Discuss any implications of the proposal for accreditation by SACS and/or other organizations.
- 13) What is the timeline for key events in the proposed change? Student enrollments, graduates, moved programs, closed courses, new faculty and staff hires, etc.
- 14) If the proposal involves degree changes*, describe how the proposed structure will enhance students' education and make them more competitive. Discuss the impact on current and future students. State assumptions underlying student enrollment growth and describe the plans for student recruitment.
- 15) Include evidence that adequate financial resources exist for the proposed unit to be viable.

A general description of the new costs and funding should be provided. A letter from the Provost, Dean, or other relevant administrators may affirm commitment to provide financial resources as appropriate. An exhaustive budget is not expected.

16) The proposal should document any faculty votes and departmental or school committee votes as appropriate leading up to this point in the process. The SAOSC recommends that faculty votes be by secret ballot. Include in your documentation of each vote taken the total number of eligible voters and the number that actually voted along with the break-down of the vote into numbers for, against and abstaining. A Chair or Dean may appropriately summarize supporting and opposing viewpoints expressed during faculty discussions.

17) The committee will want to see evidence of academic merit and support from key parties. Letters of support (or opposition) are encouraged from the relevant senior faculty and administrators. Relevant faculty and administrators include those in units directly involved in the proposed change (including existing units from which a new unit may be formed.)

18) Indicate how the new structure will be evaluated as to whether it is meeting the objectives for its formation. Timing of key events is helpful.

19) Letters of support from outside the University may be helpful in understanding why this change helps people beyond the University.

1) What is the impetus for the proposed change?

This proposal seeks to develop a new Multidisciplinary Research Center (MDRC), the University of Kentucky (UK) Center for the Environment, as an institution-wide “educational unit.” This MDRC will be in compliance with applicable University regulations. The impetus for this proposed Center is the recognition that environmental challenges faced by the Commonwealth, our nation, and world are complex and require multidisciplinary collaboration from across academic, government, and private sectors. As a land grant institution, UK was built on the premise that the environment is integral to civilization and critical in our three-fold mission of teaching, research, and community partnerships.

UK has a strong extramural research portfolio in environment-related research. Based on data collected and analyzed by the Office of the Vice President for Research (VPR), UK has received nearly \$220M in environment-related research funding in the past five years (see Question 2, Figure 3, and Appendix 1). This research spans across more than 19 Colleges and units, 300 Principal Investigators, and 715 research projects. This remarkable amount of extramural research support is evidence of the existing strength and interest in research related to the environment. Pulling these research programs, investigators, staff and students together will synergize the connectivity of these programs. *We hypothesize that creating a network and hub for this research will result in a significant increase in collaborative, extramural funding.*

The University currently lacks 1) a centralized hub for environment-focused faculty, staff, and students, and 2) a centralized resource for the Commonwealth and the world to access the innovative research and education occurring within UK.

UK’s environment- research portfolio includes research focusing on water, public health, environmental health, natural resources, engineering, food, agriculture, and nutrition. The major extramural funding agencies include the National Institute of Environmental Health Sciences, Centers for Disease Control and Prevention, the National Science Foundation, the Kentucky Department for Public Health, and the Kentucky Energy and Environment Cabinet. We envision that this new Center *will be the leader in addressing environmental challenges, particularly those that impact human health and well-being for the Commonwealth of Kentucky, the nation, and the world through innovative, transdisciplinary research, and community partnerships.*

2) What are the benefits and weaknesses of the proposed unit with specific emphasis on the academic merits for the proposed change?

The proposed Center has numerous benefits stemming from two (2) overarching goals: (Goal 1) support and expand transdisciplinary research related to environment, and (Goal 2) create education and outreach opportunities to advance environment education for both the UK campus and community beyond.

Goal 1: Support and Expand Environment Research. There are several anticipated research benefits to the proposed UK Center for the Environment. These benefits include the following:

- Create a Network and Hub for research related to environment
- Expand UK’s extramural funding portfolio
- Multidisciplinary teams that will innovate solutions to improve our environment
- Support for recruiting new faculty to UK who will fulfill the mission of the Center

- Mentorship to support early career faculty
- Engagement of broader local, national, and global community in research

The benefits stated above will be actualized through a variety of new programs and initiatives. The Center will provide an annual pilot project program to catalyze multidisciplinary research. This will be coordinated with other pilot programs across campus including the CCTS and UK-CARES. The Center will also develop an early career mentorship program for early-stage investigators. Mentorship of early career faculty will provide professional socialization and personal support to facilitate success in academic research careers. Senior mentors will be identified through our established Executive Committee/Working Group and partners in extramurally funded research programs. To facilitate mentor-mentee relationships, we will host speed dating mentorship events.

Goal 2: Create Education and Outreach Opportunities.

The proposed MDRC will be an institution-wide “educational unit,” in which education and outreach will be critical to the mission of the Center. The Center will not host credit-bearing academic programs but will provide education and outreach for the University and community in the form of symposia, workshops, and seminars. For example, the Center will administer the John P. Wyatt, M.D. Traveling Fellowship. The Wyatt Fellowship is an award given to an outstanding environmental disease researcher. To recognize this award, the Center will host a Symposium honoring the awardee with a keynote presentation. The event will bring together the environment-related centers and programs across campus to showcase their research and provide educational outreach for the Commonwealth, the region, and the world. In 2021, this event is planned as a virtual Symposium. The Center will also encourage and support the development of T32 training grants to fund and support doctoral and postdoctoral fellowship programs related to environment research and training. Benefits include the following:

- Create a Network and Hub for education and training opportunities related to the environment for faculty, staff, students, and community members.
- Increase connectivity among faculty and programs engaged in providing instruction related to environment with the goal of enriching existing training programs and creating new training opportunities housed within academic units (not the Center).
- Engagement of the broader local, national, and global education and training community related to environment.
- Enhance educational opportunities in partnership with other centers and programs across campus by inviting national and international speakers for large scale events and symposiums, such as the Wyatt Fellowship.
- Promote the application of T32 training grants to fund and support doctoral and postdoctoral students seeking environment-related education and training programs.
- Increase early career faculty mentorship in research through development of a mentorship program that will include a mock review of grant submissions and a Research in Progress meeting to discuss research aims and grant development.

3) Describe the organization of the current structure and how the proposed structure will be different and better. Current and proposed organizational charts are often helpful in illustrating reporting lines.

This new MDRC will operate under the planned structure presented below (Figure 1) and will be flexible to address future needs. The Center will report to the VPR and will have an Executive Committee (EC) and an External Advisory Board (EAB) for oversight.

Center for the Environment Organizational Structure

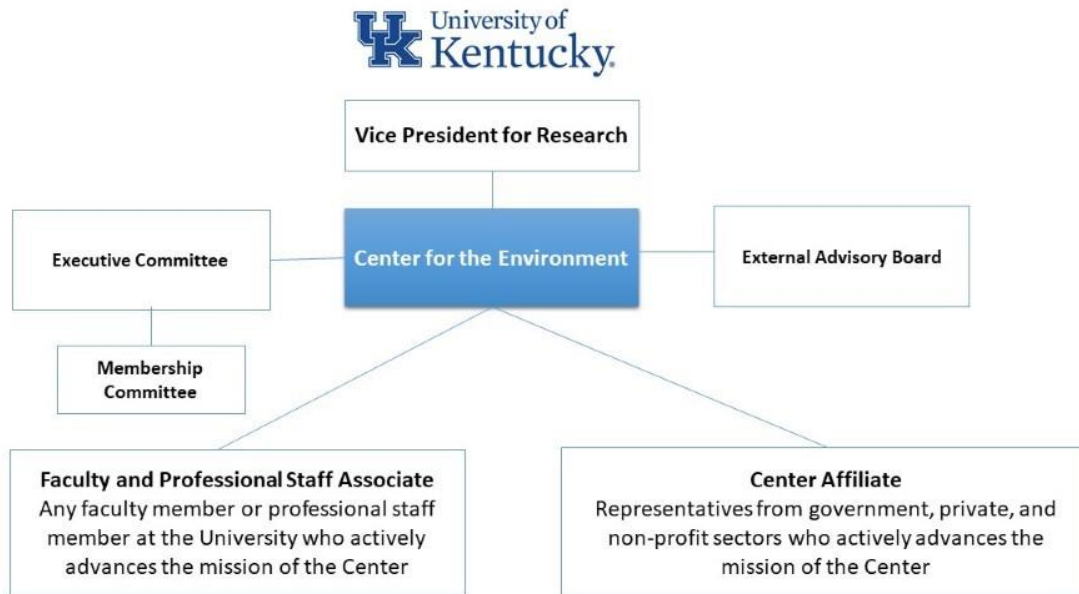


Figure 1 UK Center for the Environment Proposed Organizational Structure

The Center will offer two types of memberships: faculty and professional staff associate members and center affiliates. Faculty and professional staff associates will be those who are employed by UK who advance the mission of the center. As the topic of the environment far outspans our university walls, and to maximize a transdisciplinary approach to solving environmental issues, we will extend affiliate membership to members of the broader community, i.e. those involved in government, private, or non-profit organizations. For example, we anticipate that Center affiliates will be faculty or professionals from regional colleges, government, or community partners that are engaged in or funded by UK collaborative research that advances the mission of the Center. Faculty, staff, EC, EAB, and member associations are described in further detail in Guideline eight.

Executive Committee & the Appointee Process. The original Working Group will form the initial EC. The EC will play an important role in connecting Centers and training programs to one another on campus, and a strong effort will be made to fill the EC with Center directors and professional staff on campus. The EC will provide oversight into the Center’s budget and financial operations. The EC will also identify new funding sources and research initiatives that the Center should support.

The initial EC will serve the inaugural first two years of the Center formation. Following the first two years, the Center Director will solicit nominations from its members to formulate future members of the EC. EC members will serve a minimum 2-year term. The EC members will be identified by the membership as having exemplary knowledge or experience in environment research and training. Nominees will present biographies, resumes, and material for review as needed. EC members will be reviewed and approved by the VPR and Center Director. These members will have programmatic voting rights.

External Advisory Board Appointee Process. The EAB plays an important role connecting the Center's research directly to emerging environmental issues within the Commonwealth, our region, and across the globe. Members of the EAB will be leaders identified by the membership as having exemplary knowledge or experience related to environment and have their hand on the pulse of environmental issues that are prime for our Center investigators. The EC will seek nominations from the membership for the EAB on an annual basis. Nominees will present biographies, resumes, and material for review. EAB members will serve a minimum 2-year term and will be reviewed and approved by the VPR and the Center Director. These members will have programmatic voting rights.

Faculty and Professional Staff Associate Membership Process and Benefits. The Center for the Environment will be enhanced by the contributing activities of affiliated faculty, whose interactions with other Center faculty will enhance both the Center and their respective home department programs but without maintaining a formal DOE assignment with the Center for the Environment. University faculty members who are independent investigators or educators with a specific interest in environment-related research will be welcome to apply for membership with the Center for the Environment. The EC will seek out membership from the UK community, and members will also be able to self-nominate on an annual basis for renewal. Criteria for membership and approval will be determined by the VPR's office, adhering to University rules and regulations. In choosing Faculty Associates, the Associate Dean of Research for the primary college of the proposed Faculty Associate will be consulted and will grant approval if appropriate. The Center will create a Membership Committee and a Chair that will be comprised of faculty and professional staff associate members to evaluate existing members to ensure continued membership eligibility. Formal recommendations for new or changed member status are made to the EC and Center Director. These members will have programmatic voting rights. The Center will abide by University AR 1:3 to determine faculty and staff associates where applicable.

There are many benefits to having faculty and staff associates to advance the University mission in research, teaching, and community engagement. Associates can benefit from, (1) regular announcements about campus Environment events and news and podcast, (2) networking opportunities with other affiliates in the Center supported signature areas and events, (3) funding opportunities for research development, and (4) the opportunity to be featured on the Center website, annual report, and other promotional materials.

Center Affiliate Membership Process and Benefits. The EC will seek out membership from the community, and members will also be able to self-nominate on an annual basis. It is anticipated that these members will be external University Faculty or Professionals from regional colleges that are engaged in or funded by UK collaborative research that advances the mission of the Center. Criteria for membership and approval will be determined with the VPR's office as well as based upon University rules and regulations. The Center will use the Membership Committee (as described above) to evaluate existing members and to ensure continued membership

eligibility. Formal recommendations for new or changed member status are made to the EC and Center Director. These members will not have programmatic voting rights.

Affiliate members will (1) receive regular announcements about campus events, such as symposia, news, (2) networking opportunities with Center members, (3) access to faculty, staff, and students with expertise in environment for assistance in addressing environmental issues, (4) funding announcements that may include community partners, and (5) the opportunity to be featured on the Center's website.

4) How does the change fit with department, college, and/or university objectives and Priorities?

UK has a vast portfolio and broad research mission, tackling seven strategic research priority areas (Figure 2). The Center will work collaboratively with research priority area leadership to identify mechanisms to expand their research and education missions and will engage in efforts to spur UK's newest research initiative, *UNITed In True racial Equity (UNITE)*, focused on racial disparities and inequity forward, particularly how they relate to environmental justice and health disparities attributed to environmental factors. The new Center will expand the university's already strong research portfolio of environment-related research within colleges and across programs. Currently, 19 of the university's colleges and units have funded research projects related to the environment that

includes over 300 principal investigators and 715 funded research projects (Appendix 1). From 2015 to 2020, UK had received approximately \$220M in extramural funding that directly and indirectly promoted research to investigate the environment, including its impact on health and well-being (Figure 3).

UK's environment-related research portfolio includes research focusing on water, public health, environmental health, natural resources, engineering, food, agriculture, and nutrition. The major funding entities include the NIEHS, the NSF and agencies within Kentucky, including KY Department for Public Health and the Energy and Environment Cabinet. It is

anticipated that the Center will enhance environment-related research by providing a platform for researchers to engage, connect, and disseminate related activities, spurring new collaborative efforts. The Center will also improve faculty, staff, and student research recruitment and help elevate UK's environment-related research reputation.



Figure 2 University of Kentucky Strategic Research Priority Areas

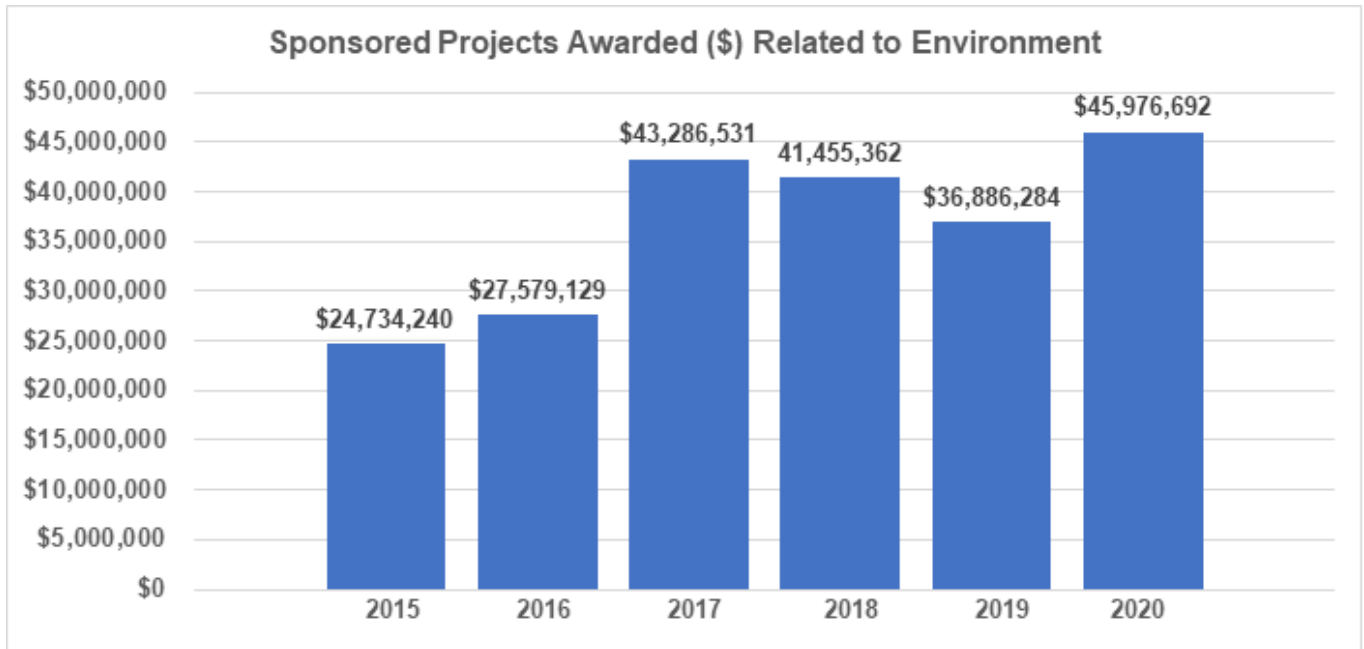


Figure 3. Sponsored UK Research on Environment from 2015 to 2020

5) How does this change better position the proposers relative to state and national peers, as well as University Benchmark Institutions? How does the change help UK meet the goals of its strategic plan?

The proposed Center for the Environment aligns beautifully with the university’s strategic plan, “Transforming Tomorrow.” The connection between the environment and human well-being is so strong that to transform tomorrow, we must be able to transform our environments today. We are a University **for** Kentucky. Our institution is “charged with confronting the most profound of challenges—in education, economic development, health care, and cultural and societal advance (UK Strategic Plan 2015-2020).” As the Commonwealth’s flagship and land-grant institution, the UK Center for the Environment will advance our institution’s research, education, and service **for** and **with** the Commonwealth. In addition, the Center reinforces the strategic plan to recognize that “the most exciting possibilities for tomorrow most often occur today at the intersection of disciplines.” The Center’s transdisciplinary theme pulls together expertise from nearly every college and program on campus.

The strategic vision of the university is echoed within the Center’s vision— as the Center will “transform the lives of our students and advance the Commonwealth we serve.” The Center will also be positioned to work closely with UNITE to enhance diversity and inclusion, as themes of environmental justice and health disparities due to environmental factors will be a major focus of the Center. The transdisciplinary nature of this Center and the benefits of education, recruitment, and outreach as discussed previously directly aligns with the Strategic Plan, and a focus on the environment will provide an outstanding innovative way to “advance the public good and to foster the development of citizen scholars.”

To benchmark UK against other institutions across the U.S., we identified other centers or institutes related to the environment (Figure 4).

Figure 4: Environment Centers or Institutes at Benchmark Institutions

A brief description of each benchmark institution is described below.



Harvard University: [Center for the Environment](#)

The Harvard University Center for the Environment (HUCE) encourages research and education about the Environment and its many interactions with human society. Through a variety of grants and fellowships, the Center supports research related to

the Environment at every level. By sponsoring symposia, public lectures, and informal student convocations, the Center connects people with an interest in the Environment. The Center is also home to the undergraduate Environmental Science and Public Policy concentration, and the Ph.D. level Graduate Consortium on Energy and Environment. While HUCE does not grant degrees, the Center has increased the university's ability to publish research through an open-access policy that has the effect of allowing open distribution of research articles. HUCE is committed to advancing these university-wide goals as well as supporting its research community. The Center Administration is comprised of a steering committee of twenty-three faculty who lead the direction and program work at the Center (<https://environment.harvard.edu/>).

University of Louisville: [Envirome Institute](#)

The Christina Lee Brown Envirome Institute's research unites a multidisciplinary group of physicians, scientists, chemists, engineers, epidemiologists, economists, psychologists, statisticians, sociologists, and community members to turn scientific discovery into actionable knowledge that can help to build healthier cities. The Center expands the university's research by housing more than 12 scientific laboratories on the university's Health Science Campus and uniting eight other university Centers to carry out their mission (<https://enviromeinstitute.com/>).

University of Arizona: [Arizona Institutes for Resilience: Solutions for the Environment and Society](#)

Arizona Institutes for Resilience: Solutions for the Environment and Society (AIR) coordinates interdisciplinary groups of faculty, students and projects across the University of Arizona's campus, from climate science to public policy, law, the arts, water resources and beyond. AIR explores and develops solutions with campus and community partners that will serve human and natural communities across the globe. Further, as part of the University of Arizona Office of Research Innovation and Impact, AIR builds a robust web of environmental connections across colleges and departments that collectively make up Arizona Environment. AIR themes that form the cross-campus Arizona Environment structure encourage solution-focused research in topics

such as climate science, adaptation and resilience solutions; national security and the environment; data, informatics and modeling; biodiversity, conservation and ecosystems; and many more. (<https://www.environment.arizona.edu/our-institute/about-air>).

Stanford University: [Stanford Woods Institute for the Environment](https://woods.stanford.edu/)

The Stanford Woods Institute for the Environment serves as the university's hub of interdisciplinary Environment and sustainability research, and the go-to place for Stanford faculty, researchers, and students to collaborate on Environment research. Their interdisciplinary work crosses sectors and disciplines, advancing solutions to the most critical, complex Environment and sustainability challenges. Working on campus and around the globe, the Center has helped create a community that develops Environment leaders; informs decision-makers with unbiased scientific data; and convenes experts from all of Stanford's seven schools, other leading academic institutions, government, NGOs, foundations, and business (<https://woods.stanford.edu/>).

University of California-Davis: [John Muir Institute for the Environment](https://johnmuir.ucdavis.edu/)

The Muir Institute is an applied research cooperative composed of UC Davis faculty, staff, and students with deep expertise in seemingly every aspect of science and society. The Institute fosters cross-disciplinary partnerships among teams of experts who take aim at the most challenging Environment, economic, human health and welfare problems of our time. The institute also expands to the community by providing the public, policy makers, and business and industry leaders with unrivaled access to UC Davis's world-renowned Environment community, acting as global consultants, innovators, and problem solvers. Their coordinated outreach activities transfer key information to diverse stakeholders and put novel ideas into practice (<https://johnmuir.ucdavis.edu/>).

University of Oregon: [Center for the Environmental Futures](https://cef.uoregon.edu/)

The Center for the Environmental Futures (CEF) is an interdisciplinary group of faculty and students that reflects a longstanding investment in Environmentalism and social justice at the University of Oregon and in the larger Eugene community. The CEF engages the Environmental humanities, social sciences, art, and architecture, in dialogue with allied fields with the goal of encouraging faculty and students in interdisciplinary Environmental studies, research, and teaching; and supporting members of the community who wish to participate in the University's Environmental studies programming and problem-solving; cultivating relationships and building projects to address the most pressing Environmental and social problems. The Center currently has 12 steering committee directors (<https://cef.uoregon.edu/>).

University of Minnesota: [Institute on the Environment](http://environment.umn.edu/)

The Institute on the Environment (IonE) collaborates with external partners while bringing different academic fields of expertise together within the University. The Institute aims to connect innovators from around the University and with external partners to discover solutions, to cultivate future leaders, and to catalyze collaborations to solve complex Environmental challenges. IonE looks for solutions for humanity to restore and renew resources for the benefit of all living things. IonE supports this breakthrough through research across disciplines, developing the next generation of global leaders and building transformative partnerships across the state, region and globe. Reporting to the Vice President for Research, the Institute has an advisory Faculty Leadership Council of ten members and an external advisory board (<http://environment.umn.edu/>).

Purdue University: [Center for the Environment](https://www.purdue.edu/center-for-the-environment/)

The Center for the Environment aims to promote proactive, interdisciplinary research, learning, and engagement at Purdue addressing important Environmental challenges by connecting faculty and students across departments and disciplines, supporting innovative projects, and increasing the impact of Purdue's work on important Environmental issues through outreach and stakeholder engagement activities. The Center offers many benefits to expanding the university's Environmental initiative through Faculty Affiliates (<https://www.purdue.edu/discoverypark/environment/>).

6) Who are the key personnel associated with the proposed unit? Provide qualifications of these personnel in a brief form. A complete curriculum vitae for each person is not needed, although pertinent information in tabular format is helpful.

Proposed Director

Erin N. Haynes, DrPH, MS, Kurt W. Deuschle Professor of Preventive Medicine and Environmental Health, Chair, Department of Epidemiology & Department of Preventive Medicine and Environmental Health. Dr. Erin Haynes is the Kurt W. Deuschle Professor in Preventive Medicine and Environmental Health and Chair, Department of Epidemiology & Department of Preventive Medicine and Environmental Health. She is also deputy director of the UK Center for Appalachian Research in Environmental Sciences (CARES) and an associate director of the UK Center for Clinical and Translational Science (CCTS). She has held over \$11 million in NIEHS R-level funding as PI and is currently leading research (R01ES026446 and R24ES030904) on the impact of environmental neurotoxicant exposure in rural adolescents, and development and validation of a real-time lab-on-a-chip sensor for blood metals detection (R21/R33ES024717-02 and R01ES022933). The sensor will be validated in Southeast Chicago with a collaborator from the University of Illinois, Chicago. Dr. Haynes is particularly interested in working with community members to address environmental health issues and develop citizen science tools to enable environmental health research. She also serves on the NIH/NIEHS Environmental Health Sciences study section, is co-chairing the 2021 International Society for Exposure Science annual meeting, a member of the National Academies of Sciences Committee on the Guidance for PFAS Testing and Health Outcomes, and is the senior associate editor of the Journal of Appalachian Health.

Executive Committee (alphabetical order)

Rodney Andrews, PhD, Associate Vice President for Research Development, Director, Center for Applied Energy Research. Dr. Andrews has been the director of the UK Center for Applied Energy Research (CAER) since 2007. CAER's energy research provides a focal point for coal and environment research in Kentucky. Dr. Andrews is a professor of chemical engineering and his research interests include carbon materials, nanotube-polymer and nanotube-carbon composite materials, carbon fiber formation, and activated carbon materials. Within the Office of the Vice President for Research, Dr. Andrews assists in improving the infrastructure for intellectual property, technology transfer, facilitates operations of Research Information Systems (RIS), and facilitates operation of the Office for Technology Commercialization (OTC).

Donna Arnett, Dean, PhD, College of Public Health. Dr. Arnett serves as Dean of the University of Kentucky College of Public Health and a Professor in the Department of Epidemiology. Dr. Arnett studies genes related to hypertensive disorders and organ damage that results from hypertension -- an interest she developed early in her career while working as a clinical research nurse. A past president of the American Heart Association (AHA), she has

led the AHA's Research Committee and Scientific Publishing Committee. Dr. Arnett is also an elected fellow of the AHA, the American College of Epidemiology, and the American Epidemiological Society.

Allan Butterfield, PhD, Associate Vice President for Centers and Institutes. Dr. Butterfield is the UK Alumni Association Endowed Professor of Biological Chemistry, director of the Redox Metabolism Core of the Markey Cancer Center, and faculty in both the Spinal Cord and Brain Injury Research Center and the Sanders-Brown Center on Aging. His research focuses on free radical oxidative stress in aging and age-related neurodegenerative disorders, particularly Alzheimer's disease. Within the Office of the Vice President for Research, Dr. Butterfield facilitates operations of Research Centers and Institutes and establishes processes for Center/institute development and support.

Lisa Cassis, PhD, Vice President for Research. Dr. Cassis has served as the University of Kentucky's Vice President for Research since June 2015. As VP for Research, she leads the university's research enterprise and oversees research proposal development, grants and contracts administration, human subjects protection, 13 multidisciplinary research Centers and institutes, and seven service core facilities. She has provided leadership on the UK Strategic Plan and for the new \$265 million research building—which will focus UK research efforts on Kentucky's most pressing health challenges in the areas of cancer, obesity, diabetes, cardiovascular diseases, and substance abuse. The building opened in summer 2018.

Ellen Hahn, PhD, RN, FAAN, Director BREATHE and Director UK-CARES, College of Nursing. Ellen J. Hahn is a Professor in the Colleges of Nursing and Public Health at UK and Director of BREATHE including the Tobacco Policy Division, the Kentucky Center for Smoke-free Policy (KCSP), and the Radon Policy Division. She also serves as Interim Director of UK-CARES (Center for Appalachian Research in Environmental Sciences) and Leader of its Community Engagement Core. She holds the Marcia A. Dake Endowed Professorship in the College of Nursing. Dr. Hahn is Director of UK-CARES (Center for Appalachian Research in Environmental Sciences) and Leader of its Community Engagement Core. She is also a Faculty Associate at UK's NCI-designated Markey Cancer Center, and a member of the Lung Cancer Translational Research Group.

William Haneberg, PhD, Director, Kentucky Geological Survey, College of Arts and Sciences. Dr. Haneberg serves as both a Research Professor in UK's Department of Earth and Environmental Sciences and the State Geologist and Director, Kentucky Geological Survey. His research and professional interests span a range of topics including geomechanics, engineering geology, structural geology, computational geology, geologic hazard and risk assessment, digital terrain modeling, GIS applications, geohealth issues, and the use of geological information to support planning and policy decisions.

Elizabeth Lorch, PhD, Senior Associate Dean for Research, College of Arts and Sciences. As Associate Dean for Research and Graduate Studies, Elizabeth Lorch oversees graduate programs in the College, approvals for sponsored funding proposals, and awards for college-funded research support. While at UK, Lorch served on the University Senate, and has previously been a member of the College of Arts & Sciences Review Committee, the Social Sciences Advisory Committee, and the Selection Committee for University Research Professors.

Lindell Ormsbee, PhD, Director, KWRRI; Executive Director, TFISE, College of Engineering. Dr. Ormsbee currently serves as the director of the Kentucky Water Research Institute, the Kentucky Center of Excellence for Watershed Management as well as the associate director of the UK Superfund Research Center. In the past he has served in several other research administrative capacities including, Director of the Kentucky Research Consortium for Energy and Environment, Director of the Tracy Farmer Center for the Environment, Director of the UK-PRIDE Water Quality Assessment Program, the Chair of the Kentucky Environmental Quality Commission, and the Chair of the Scientific Advisory Board of the Kentucky Watershed Watch Program.

Kelly Pennell, PhD, Director, UK Superfund Research Center, College of Engineering Dr. Pennell is currently an Associate Professor in the Department of Civil Engineering. Her research interests include the fate and transport of environmental contaminants, water disinfection processes, and environmental systems modeling. In addition to research and teaching, she has experience as an environmental consultant and a governmental liaison. Drawing from all of her current and previous experience, her research is situated at the interface of research, policy and practice. From 2005 until 2010 she was the state agencies liaison for Brown University's Superfund Research Program. She has been a licensed professional engineer (PE) since 2001

Laura Stephenson, PhD, Director of Cooperative Extension, College of Agriculture, Food and Environment. Dr. Stephenson currently serves as the Associate Dean for Extension within the College of Agriculture, Food and the Environment. Having served the state as an extension agent, district director and assistant director for family and consumer sciences extension field programs, Stephenson is a strong advocate for county-based programming, building capacity of interdisciplinary faculty teams and engagement of local, regional and state stakeholders.

D. Shane Tedder, MS, Campus Sustainability Officer, Assistant Director, TFISE. Shane Tedder has served as the Sustainability Coordinator for the University of Kentucky since 2009. His office is active in policy development and planning processes for the University and recently led the development of the University's first Sustainability Strategic Plan. This plan includes an implementation plan for UK's Greenhouse Gas Emissions Reduction Commitment. He frequently provides guest lectures in a variety courses and works to make sure the campus of the University is available as a living laboratory for students and faculty.

7) Discuss leadership and selection process for appointing a chair, a director, or interim leader and search process, etc.

The proposed Center Director, Erin N. Haynes, was recruited with the intention of helping create this Center for the campus under the direction of the VPR. The Center Director will report to the VPR. The Director will undergo a term of appointment and shall be appointed for a term of six (6) years and may be reappointed. The search process and appointment of a future or interim director will be at the discretion of the VPR.

8) What is the function of the faculty/staff associated with the proposed change and how is that relationship defined? Discuss DOE, adjunct, full-time, voting rights, etc.

The proposed Center will not host primary faculty appointments or contribute to DOE. The Center will have memberships offered to faculty and staff to collaborate with the Center's initiatives and programs. These roles are outlined and described in response to Questions 3 and 6 above.

It is anticipated that the Center will initially require two staff members to facilitate administration and coordination of center events, programming, and communication. The Center will require a program administrator to coordinate and conduct the day-to-day operations, including management of memberships, calendar of all environment-related events across campus, coordinate the EAB, and other programming. The administrator will work closely with an events/communications coordinator who will be responsible for coordinating the Wyatt Symposium and other events hosted or co-hosted by the Center. The individual will also be responsible for building and maintaining the Center website, work closely with UK media relations to develop news articles highlighting environment research conducted by Center members, create and maintain social media for the Center, and promote the work of Center members through numerous other avenues. Both staff will represent the Center's mission and vision both internal to UK and externally.

9) Will the proposed change involve multiple schools or colleges?

The goal of this Center is to involve every school and college within UK within the Center. Environment is a cross-cutting theme that requires multidisciplinary approaches. As evidenced by the current research portfolio at UK (Figure 3 and Appendix 1), 19 of the university's colleges and units have funded research projects related to the environment. The currently proposed Executive Committee include five (5) UK colleges (see Question 17).

10) If the proposed change will involve transferring personnel from one unit to another, provide evidence that the donor unit is willing and able to release the personnel.

This proposal does not involve transferring personnel from one unit to another.

11) What is the arrangement of faculty associated with the proposed change and how is that relationship defined? Discuss faculty DOE and status as adjunct, tenure track, or tenured. Describe the level of faculty input in the policy-making process including voting rights and advisory.

This proposed Center has no implications on faculty DOE and faculty who are associate members will have programmatic voting rights as stated above.

12) Discuss any implications of the proposal for accreditation by SACS and/or other Organizations.

This proposed Center will not offer credit-bearing curriculum. This proposed Center has no implications for accreditation.

13) What is the timeline for key events in the proposed change? Student enrollments, graduates, moved programs, closed courses, new faculty and staff hires, etc.

Following Senate approval, the Center will begin by seeking hiring exception requests for its staff. Other key events will include the Wyatt Symposium on Earth Day, April 22, 2021, the organization of the EC, seeking members, and organizing and convening the EAB.

14) If the proposal involves degree changes*, describe how the proposed structure will enhance students' education and make them more competitive. Discuss the impact on current and future students. State assumptions underlying student enrollment growth and describe the plans for student recruitment.

There are no proposed changes to existing university degrees and academic programs. It is anticipated that the Center will enhance the supplemental academic opportunities of students and professional staff by promoting environment-related educational learning and training opportunities. The Center will also aid in the development of new environment-related programs, courses, and trainings and it is assumed that student enrollment growth will expand for the university. The Center will not offer credit-bearing curriculum.

15) Include evidence that adequate financial resources exist for the proposed unit to be viable. A general description of the new costs and funding should be provided. A letter from the Provost, Dean, or other relevant administrators may affirm commitment to provide financial resources as appropriate. An exhaustive budget is not expected.

Dr. Haynes has funded the development of this proposal from her start-up funds provided by the VPR. The Center will receive financial support from the VPR through their guidance for enrichments (<https://www.research.uky.edu/internal-research-support-programs/research-enrichment-program>). Additionally, the Center will take the responsibility for administering the established VPR John P. Wyatt Traveling Fellowship Award providing support for the Symposium. The Center will also work closely with the Office of Philanthropy to seek financial support through external endowments and contributions.

16) The proposal should document any faculty votes and departmental or school committee votes as appropriate leading up to this point in the process. The SAOSC recommends that faculty votes be by secret ballot. Include in your documentation of each vote taken the total number of eligible voters and the number that actually voted along with the break-down of the vote into numbers for, against and abstaining. A Chair or Dean may appropriately summarize supporting and opposing viewpoints expressed during faculty discussions.

All the representatives involved in this proposal, including the Office of VPR, and individuals in these Colleges are supportive of this Center proposal: Agriculture, Food and Environment, Arts and Sciences, Engineering, Nursing, and Public Health.

17) The committee will want to see evidence of academic merit and support from key parties. Letters of support (or opposition) are encouraged from the relevant senior faculty and administrators. Relevant faculty and administrators include those in units directly involved in the proposed change (including existing units from which a new unit may be formed.)

The Center has the following letters of support from Colleges, Departments, Centers and Campus Organizations:

Executive Committee (alphabetical order)

- Rodney Andrews, PhD, Associate Vice President for Research Development, Director, Center for Applied Energy Research
- Donna Arnett, Dean, PhD, College of Public Health
- Allan Butterfield, PhD, Associate Vice President for Centers and Institutes
- Lisa Cassis, PhD, Vice President for Research
- Ellen Hahn, PhD, Director, BREATHE; Director, UK-CARES, College of Nursing
- William Haneberg, PhD, Director, Kentucky Geological Survey, College of Arts and Sciences
- Elizabeth Lorch, PhD, Senior Associate Dean for Research, College of Arts and Sciences
- Lindell Ormsbee, PhD, Director, KWRRRI; Executive Director, TFISE, College of Engineering
- Kelly Pennell, PhD, Director, UK Superfund Research Center, College of Engineering
- Laura Stephenson, PhD, Director of Cooperative Extension, College of Agriculture, Food and Environment
- D. Shane Tedder, MS, Campus Sustainability Officer, Assistant Director, TFISE

Additional University Support

- Craig Carter, DVM, PhD, Director, Veterinary Diagnostic Laboratory
- Robert DiPaola, MD, Dean, College of Medicine
- Mark Evers, MD, Director, Markey Cancer Center
- Bernhard Hennig, PhD, Deputy Director, UK Superfund Research Center, College of Agriculture, Food and Environment
- Wayne T. Sanderson, PhD, Director, Central Appalachian Regional Education and Research Center
- Sharon Walsh, PhD, Director, Center for Drug and Alcohol Research
- Linda J. Van Eldik, PhD, Director, Sanders-Brown Center on Aging

18) Indicate how the new structure will be evaluated as to whether it is meeting the objectives for its formation. Timing of key events is helpful.

The Center for the Environment will be evaluated following university guidelines. The proposed Center will be reviewed comprehensively by an ad hoc committee every five to seven years. All periodic reviews will be used to evaluate unit performance and effectiveness with respect to the quality of education and student support programs, resources, and administrative processes, and services. The results of the periodic review will be used to develop strategic planning and unit initiatives. Additionally, the performance of the Center Director will be reviewed comprehensively at regular intervals by the VPR. An ad hoc review committee will be formed with representatives from affected constituencies and may include members external to Center. The reviews shall be designed to provide information to enhance leadership and unit effectiveness and to guide compensation and employment decisions.

To further implement a frequent review of programs, activities, and initiatives, the EC will meet quarterly and the EAB will meet annually. Additionally, the Membership Committee will meet quarterly to review new applicants and annually for existing member review. The Center will publish an annual progress report to document unit progress toward achieving its strategic planning initiatives based on the results and recommendations of its periodic review. The Center's impact on research and education will be the focus of the annual report. Metrics of

impact include, but are not limited to: number and amount of extramural funding by Center members, numbers of collaborations across campus by members, success of pilot research program (return on investment), publications, research innovation, and community-engagement in research. Educational outreach activities will be measured by post-event surveys.

19) Letters of support from outside the University may be helpful in understanding why this change helps people beyond the University.

Community-engagement is a high priority for the Center, and we expect a high-level of interest and participation in this Center by external stakeholders given their level of current participation on existing environmental centers and institutes. For example, Dr. Lindell Ormsbee has active membership from community stakeholders within the Water Research Institute and Drs. Ellen Hahn and Erin Haynes have strong connections with stakeholders involved in the NIEHS Environmental Health Center. In addition, given that the Center's intent is to invite key national leaders in the environment sector to join as center affiliates, it is advantageous to officially solicit membership once the Center is approved. Thus, we did not actively seek external letters of support for this phase in the Center's proposal process.

APPENDIX 1: COLLEGES AND UNITS WITH PIS AND PROJECTS RELATED TO ENVIRONMENT FROM 2015 TO 2020

2015 through 2020	# of PIs	# of Projects	Awarded Projects
CAFE	110	282	\$61,211,139.00
Medicine	52	85	\$34,624,660.00
Research	36	110	\$33,578,486.00
Engineering	39	71	\$28,471,901.00
Public Health	16	54	\$27,469,614.00
Health Sciences	3	4	\$10,684,316.00
Arts & Sciences	33	48	\$8,756,217.00
Nursing	6	29	\$8,436,811.00
Dentistry	2	2	\$2,079,085.00
Graduate School	3	7	\$1,319,294.00
Pharmacy	4	4	\$1,059,764.00
Business and Economics	4	6	\$742,506.00
Comm and Info	1	2	\$449,067.00
Education	4	4	\$398,491.00
Social Work	1	2	\$360,010.00
Library Administration	1	1	\$156,439.00
Campus Physical Plant	2	2	\$111,313.00
Design	1	1	\$5,000.00
Exec VP for Health Affairs	1	1	\$4,125.00
Grand Total	315	715	\$219,918,238



Office of the Vice President for Research

311 Main Building
Lexington, KY 40506-0032
(859) 257-5294
Fax: (859) 323-2800
www.research.uky.edu

September 16, 2020

Erin N. Haynes, DrPH, MS
Kurt W. Deuschle Professor in Preventive Medicine and Environmental Health
Chair, Department of Epidemiology & Department of Preventive Medicine and Environmental Health
College of Public Health
University of Kentucky
Lexington, KY 40536

Dear Dr. Haynes,

As Vice President for Research, I strongly endorse establishing the UK Center for the Environment. The Center provides a unique opportunity for UK to take the lead in this area for the Commonwealth and beyond. The mission of the Center is closely aligned with the ongoing research within our university and focuses directly on meeting our research priorities through collaboration. Many of our faculty are currently cooperating with a multitude of colleges across campus on environment-related programs. The Center will aid in current and future collaboration by providing a comprehensive hub for environment-related activities, initiatives, and joint environment-based research. Establishing this Center will profoundly strengthen our competitiveness for sponsored research opportunities.

The University is committed to its seven research priorities that encompass a diverse research portfolio in major areas that include: neuroscience, substance use disorder, cancer, diabetes and obesity, cardiovascular, racial equity (UNITE), and energy that meet UK's strategic plan initiatives. A focus on the Commonwealth's environment plays a factor in all our research priorities, and a university-wide initiative such as this will broaden our collaborative efforts to improve the health of Kentuckians and our nation. As this Center is non-degree granting and multidisciplinary in scope it is appropriate that the planned organizational structure is under the auspices of the Vice President for Research's Office.

Additionally, the Center will offer a wonderful opportunity for us to connect and synergize with faculty and staff across the campus on environment-related activities. Additionally, I enthusiastically support the participation of other University Centers and Institutes in this Center's programs.

Sincerely,

A handwritten signature in blue ink that reads "Lisa Cassis".

Lisa Cassis, PhD
Vice President for Research



D. Allan Butterfield, PhD
The UK Alumni Association Endowed Professor of Biological Chemistry
University of Kentucky College of Arts and Sciences;
Associate Vice President for Research
249 Chemistry-Physics Building
Lexington, KY 40506
Ph: (859) 257-3184
E: dabcons@uky.edu

September 16, 2020

Erin N. Haynes, DrPH, MS
Kurt W. Deuschle Professor in Preventive Medicine and Environmental Health
Chair, Department of Epidemiology & Department of Preventive Medicine and Environmental Health
College of Public Health
University of Kentucky
Lexington, KY 40536

Dear Dr. Haynes,

As Associate Vice President for Research with a portfolio that includes Centers and Institutes, I strongly endorse establishing the UK Center for the Environment. Working directly with the Vice President for Research, we believe that the Center provides a unique opportunity for UK to take the lead in this pivotal area of research for the Commonwealth and beyond. The mission of the Center is closely aligned with ongoing research within our university and focuses directly on meeting our research priorities through collaboration, as many of our faculty are currently cooperating with a multitude of colleges across campus on environment-related programs. The Center will aid in current and future collaboration by providing a comprehensive hub for environment-related activities, initiatives, and joint environment-based research. Establishing this Center will only strengthen our competitiveness for sponsored research opportunities.

The Office of the Vice President for Research is currently home to 13 Centers and Institutes that are multidisciplinary in scope and non-degree granting. This proposal seeks an appropriate home in this organizational structure and will significantly improve our Center and Institute collaborations to further our seven research priority areas. I see great opportunity in this Center for adding increased value and output for externally funded research programs.

Additionally, the Center will offer a wonderful opportunity for us to connect and synergize with faculty and staff across the campus on environment-related activities. I enthusiastically endorse support the participation of other University Centers and Institutes to further this Center's programs.

Sincerely,

A handwritten signature in blue ink that reads 'D. Allan Butterfield'.

D. Allan Butterfield, PhD
The University of Kentucky Alumni Association Endowed Professor of Biological Chemistry;
Associate Vice President for Research;
Director, Redox Metabolism Shared Resource Facility, NCI-designated Markey Cancer Center;
Faculty, Sanders-Brown Center on Aging;
Fellow, Society for Redox Biology and Medicine

September 8, 2020

Erin N. Haynes, DrPH, MS
Kurt W. Deuschle Professor in Preventive Medicine and Environmental Health
Chair, Department of Epidemiology & Department of Preventive Medicine and Environmental Health
College of Public Health
University of Kentucky
Lexington, KY 40536

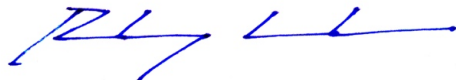
Dear Dr. Haynes,

As Director of the University of Kentucky Center for Applied Energy Research and Associate Vice President for Research Development, I strongly endorse establishment of the UK Center for the Environment. Working directly with the Vice President for Research, we believe that the Center provides a unique opportunity for UK to take the lead in this much-needed area for the Commonwealth. While the university is committed to seven research priorities that tackle issues in Kentucky's health and science arenas, expanding our commitment to the environment will profoundly strengthen our competitiveness for sponsored research opportunities.

Working directly with the commercialization of products from our research at UK, I see enormous potential that this Center could provide in expanding and improving our intellectual property and technology transfer as it relates to the development of new technologies and products in the environmental research field. Our Office for Technology Commercialization could also see positive growth in the Center's ability to expand research projects that assist in the development of inventions that improve and mitigate incidences of environmental exposures, problems all too common in Kentucky.

Additionally, I see great opportunity in this Center improving our collaborations in relating to environmental impacts of energy production and utilization. CAER has major programs looking at emissions control and beneficial reuse from coal utilization, this Center will offer opportunities to collaborate on existing and new initiatives. I also believe that there will be positive impact from this Center in a multitude of other campus Centers and Institutes across multiple disciplines. I enthusiastically support the participation of other University Centers and Institutes in furthering this Center's programs.

Sincerely,



Rodney Andrews, PhD PE
Associate Vice President for Research Development
Director, Center for Applied Energy Research



College of Public Health
Office of the Dean

September 10, 2020

Erin N. Haynes, DrPH, MS
Kurt W. Deuschle Professor in Preventive Medicine and Environmental Health
Chair, Department of Epidemiology & Department of Preventive Medicine and Environmental Health Deputy
Director, NIEHS Center for Appalachian Research in Environmental Sciences (UK-CARES)
College of Public Health
University of Kentucky
Lexington, KY 40536

Dear Dr. Haynes,

As Dean of the College of Public Health, I strongly endorse establishing the UK Center for the Environment. This Center will provide a unique opportunity for the University of Kentucky to take the lead in this area for both the Commonwealth and beyond. The vision for this Center as a leader in addressing environmental challenges will work well in tandem with the College of Public Health to address health issues, especially those experienced in Kentucky. The College of Public Health has rigorous, multi-faceted research and training programs and is home to the Department of Occupational Medicine and Environmental Health. The newly established Center for the Environment will provide a much needed and crucial bridge to further expand our programs and collaborations for a healthier world.

The College has a strong and dynamic research portfolio in its own departments as well as in collaboration with other departments across the university in examining incidences of environmental exposures and toxins as well as overall health outcomes. Home to seven college-based centers, our College operates a robust research agenda that emphasizes collaboration within our faculty and with external institutions and agencies. In fiscal year 2020, projects led by our faculty received \$19.9M in funding from federal, state and private sources to tackle tough issues including: cancer, opioid addiction, environmental health, and health disparities in rural communities, throughout the Commonwealth of Kentucky, and across our nation. A common theme throughout our research portfolio is the environment, and this initiative will be critical in expanding our research impact. It will aid not only in the University's competitiveness in extramurally-funded research, but in our productivity and commitment to the health of the people in Kentucky and the mission of our College. The impacts from this Center will help promote the University's mission and reputation throughout the world.

I would be eager to promote this Center and share the potential benefits with our research faculty and research assistants. I also see an opportunity for the Center to enhance the recruitment and retention of faculty, staff, not only the College of Public Health but across the entire campus. Finally, the Center will offer a wonderful opportunity for us to connect and synergize with faculty, staff, and students across the campus on environment-related activities, and I will enthusiastically encourage my department to participate in the Center's programs.

Sincerely,

A handwritten signature in blue ink that reads 'Donna K. Arnett'.

Donna K. Arnett, PhD
Dean and Norton Healthcare Professor of
Epidemiology College of Public Health
University of Kentucky

see blue.

September 19, 2020

Erin N. Haynes, DrPH, MS
Kurt W. Deuschle Professor in Preventive Medicine and Environmental Health
Chair, Department of Epidemiology & Dept of Preventive Medicine and Environmental Health
College of Public Health
University of Kentucky
Lexington, KY 40536

Dear Dr. Haynes:

As Director of the UK Center for Appalachian Research in Environmental Sciences (UK-CARES), I strongly endorse establishing the UK Center for the Environment. The Center for the Environment will provide a unique opportunity for the University of Kentucky to take the lead in this area of much needed research for the Commonwealth and beyond. The vision for the Center as a leader in addressing a broad range of environmental challenges should have natural collaborations with UK-CARES given our mutual focus on Kentucky's environmental issues and opportunities.

UK-CARES is one of over 20 NIEHS-funded Environmental Health Sciences Core Centers aimed at enhancing research capacity to address the environmental health concerns in the coal-producing region of southeast Kentucky. Our community is concerned about the health impacts of water quality, insecurity, and remediation as well as air pollution and other exposures to commercial and industrial chemicals that are associated with environmentally-induced disease. UK-CARES provides advanced infrastructure and leading expertise, dedicated career development and mentorship, and community-engaged interactions to facilitate innovative discovery, and new understandings of environmental factors in disease initiation, progression, outcomes and their community impacts. The new Center for the Environment will provide additional opportunities for UK-CARES' members to engage in its activities, initiatives, and newly generated research programs. The UK Center for the Environment will only strengthen our mission and productivity.

This newly established Center will bring about excitement and energy not only to expand our research priority areas but also to improve faculty recruitment and retention in the environmental sciences. Additionally, the Center will offer a wonderful opportunity for us to connect and synergize with faculty, staff, and students across the campus on environment-related activities, and I will enthusiastically encourage UK-CARES' members to participate in its programs.

Sincerely,



Ellen J. Hahn, PhD, RN, FAAN
Professor and Director, UK-CARES
Director, BREATHE
University of Kentucky College of Nursing
ejhahn00@email.uky.edu
<https://ukcares.med.uky.edu/> @ukcares1



University of Kentucky
Kentucky Geological Survey

504 Rose Street
228 Mining & Mineral Resources
Lexington KY 40506-0107
Main: +1.859.257.5500
www.uky.edu/kgs

September 4, 2020

Erin N. Haynes, DrPH, MS
College of Public Health
University of Kentucky

Dear Dr. Haynes:

As Kentucky's state geologist, director of the Kentucky Geological Survey, and a research professor in the UK Earth and Environmental Sciences Department, I strongly endorse your proposal for a new UK Center for the Environment.

This center will help establish UK as a national leader in the study and solution of significant environmental problems. It will further support the UK research mission and help to expand UK training and outreach activities. The center will work well in collaboration with the Kentucky Geological Survey. It will also generate excitement and energy by expanding our research platform and supporting recruitment of research staff and faculty who are vital the UK land grant and research missions.

The Kentucky Geological Survey is a state supported research center and public resource within the University of Kentucky, operating to support the sustainable prosperity of the commonwealth and the welfare of its people. We do this by conducting research and providing unbiased information about geologic resources, environmental issues, and natural hazards affecting Kentucky. The new center will strengthen institutional support our mission, increase our productivity, and help us to reach larger and more diverse audiences. I see great opportunity in the many ways we will be able to collaborate to both better serve Kentucky and to help create a healthier environment for its citizens.

The new center will offer a wonderful opportunity for our staff to connect and synergistically collaborate with faculty, staff, and students across the campus on environmental research. I will enthusiastically encourage KGS scientists to participate in its programs.

Sincerely,

A handwritten signature in blue ink that reads "William C. Haneberg".

William C. Haneberg, Ph.D., P.G.

State Geologist and Director, Kentucky Geological Survey
Research Professor, Department of Earth & Environmental Sciences

bill.haneberg@uky.edu
+1.859.323.0559



College of Arts and Sciences

Office of the Dean
202 Patterson Office Tower
Lexington, KY 40506-0027

859 257-8354
fax 859 323-1073

www.as.uky.edu

September 2, 2020

Erin N. Haynes, DrPH, MS
Kurt W. Deuschle Professor in Preventive Medicine and Environmental Health
Chair, Department of Epidemiology & Department of Preventive Medicine and
Environmental Health
College of Public Health
University of Kentucky
Lexington, KY 40536

Dear Dr. Haynes:

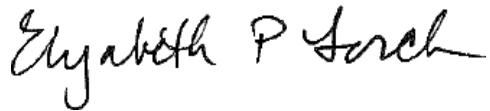
As Senior Associate Dean for Research in the College of Arts and Sciences, I strongly endorse establishing the UK Center for the Environment. Such a center would provide a unique opportunity for the University of Kentucky to take the lead in this area both for the Commonwealth and beyond. I see great potential in the College closely collaborating on environmental efforts made by the university to improve its research platform. The vision for this Center as a leader in addressing environmental challenges will work well in tandem with the College of Arts and Sciences. The newly established Center for the Environment will provide a much needed and crucial bridge to further expand our programs and collaborations for a healthier Kentucky.

The College of Arts and Sciences has a strong and dynamic environmentally-focused research portfolio across our social science and natural science disciplines, including faculty in departments such as Geography, Anthropology, Sociology, Biology, Chemistry, and Earth and Environmental Sciences. I see great opportunity to grow and expand the current research we are undertaking in our environment and sustainability studies program where we examine the social and environmental causes, consequences, and policy responses to important environmental issues. Among those we are looking at are global climate change, pollution, and biodiversity loss. I have no doubt that UK will see enormous benefit in creating a campus-wide initiative such as this to facilitate and expand our work in bettering the environment for our College, the entire campus, and the greater community.

I would be eager to promote this Center and share the benefits with our research faculty and research assistants. I also see a unique benefit to the recruitment and retention of

faculty as well as future collaborative research opportunities. The impact from this Center will help promote the University's mission and reputation throughout the world. Finally, the Center will offer a wonderful opportunity for us to connect and synergize with faculty, staff, and students across the campus on environment-related activities. I will wholeheartedly encourage my department to participate in the Center's programs.

Sincerely,

A handwritten signature in black ink that reads "Elizabeth P Lorch". The signature is written in a cursive style with a large initial "E".

Elizabeth P. Lorch, Ph.D.
Senior Associate Dean for Research
College of Arts and Sciences



University of Kentucky
Kentucky Water Resources
Research Institute
233 MMRB
Lexington, KY 40506
P: 859-257-1299
www.research.uky.edu/kwrri

Erin N. Haynes, DrPH, MS
Kurt W. Deuschle Professor, Department of Preventive Medicine and Environmental Health
Chair, Department of Epidemiology & Department of Preventive Medicine and Environmental Health
Deputy Director, UK Center for Appalachian Research in Environmental Sciences ([UK-CARES](#))
College of Public Health
University of Kentucky
Lexington, KY 40536

Dear Dr. Haynes,

As the director of the Kentucky Water Resources Research Institute and Executive Director of the Tracy Farmer Institute for Sustainability and the Environment, I strongly endorse establishing the UK Center for the Environment. I believe the University of Kentucky is well positioned to become a national leader in environmental research and that this Center will help provide the catalyst to make this dream a reality. The University of Kentucky has many concentrations of research excellence scattered throughout various academic departments and related research centers. Relevant research centers include the Kentucky Geologic Survey, the Kentucky Water Resources Research Institute, the Tracy Farmer Institute for Sustainability and the Environment, the University of Kentucky Superfund Research Center, and the Center for Appalachian Research in Environmental Sciences. The proposed center will facilitate transdisciplinary research between such centers' environmentally related academic programs to help leverage additional research funding to the university and provide increased academic opportunities for students. The center will also provide an opportunity to address national and international environmental issues, as well as the many environmental challenges that continue to be faced by the state of Kentucky.

As a leader in the environmental research community at UK, I fully endorse and support this initiative.

Sincerely,



Lindell Ormsbee, P.E., P.H., Ph.D., D.WRE

Director, Kentucky Water Resources Research Institute
Executive Director, Tracy Farmer Institute for Sustainability and the Environment
Raymond-Blythe Professor of Civil Engineering
233 Mining and Mineral Resources Building
Lexington, KY 40506-0107
859-257-6329
lindell.ormsbee@uky.edu
<https://www.research.uky.edu/kwrri>

Erin N. Haynes, DrPH, MS
Kurt W. Deuschle Professor in Preventive Medicine and Environmental Health
Chair, Department of Epidemiology & Preventive Medicine and Environmental Health
University of Kentucky, College of Public Health
Lexington, KY 40536

Dear Dr. Haynes,

As Director of the University of Kentucky Superfund Research Center (UKSRC), I enthusiastically support establishing the University of Kentucky (UK) Center for the Environment. This new center will propel UK forward as a leader by: harnessing the power and energy of UK expertise related to the environment; addressing complex environmental challenges; and creating opportunities to discover and innovate. The UK Center for the Environment will also enable new meaningful collaborations to promote research around topics related to environmental racism and other social justice initiatives, which supports the recently created UNITE Research Priority Area under the UK Office of the Vice President for Research.

Complex environmental challenges are critical to the work we conduct within UKSRC, which integrates multidisciplinary research, training, and stakeholder engagement to reduce health risks posed by environmental contaminants in vulnerable communities. UKSRC is supported (\$8.7 million, 2020-2025) by the National Institute of Environmental Health Sciences (NIEHS) Hazardous Substance Basic Research and Training Program (Superfund Research Program [SRP]) under Award Number P42ES007380. UK SRC was first funded by NIEHS SRP in 1997 and competes for funding every five years through the NIH scientific review process.

UKSRC and the UK Center for the Environment missions align in that we focus on under-resourced communities with health disparities. I expect that this newly established initiative will work in tandem to bring about new opportunities for researchers, faculty, students, and staff to engage and collaborate in critical environmental work. Together, we can help provide creative insight and aid in solving some of the Commonwealth's most pressing environmental health problems. Establishing this Center will additionally strengthen our competitiveness for sponsored research opportunities.

The UK Center for the Environment provides a wonderful opportunity to harness the power and energy of so many ongoing, but disparate initiatives across UK's campus. It will provide a way for us to connect, synergize, and collaborate with faculty, staff and students on environment-related activities. I will enthusiastically encourage UKSRC's participation in this new center and look forward to having its presence on campus.

Sincerely,



Director Kelly G. Pennell, PhD, PE, NIEHS UK Superfund Research Center

Cooperative Extension Service

*Associate Dean for Extension
S-107 Ag Science Center North
Lexington, KY 40546-0091
(859)257-4302
Fax: (859) 257-3501
<http://extension.ca.uky.edu>*

August 26, 2020

Erin N. Haynes, DrPH, MS
Kurt W. Deuschle Professor in Preventive Medicine and Environmental Health
Chair, Department of Epidemiology & Department of Preventive Medicine and Environmental Health
College of Public Health
University of Kentucky
Lexington, KY 40536

Dear Dr. Haynes:

As Director of the Kentucky Cooperative Extension Service, I wholeheartedly endorse UK establishing the UK Center for the Environment. I am excited about this Center serving as a catalyst for the University of Kentucky to take the lead in this area for the Commonwealth and beyond. The vision for the Center as a leader in addressing environmental challenges will no doubt have strong collaborations with the Kentucky Cooperative Extension Service as our missions align in bringing community awareness to Kentucky's environment.

The Kentucky Cooperative Extension Service has four areas of programming in Farms, Gardens & Environment; Nutrition, Family & Homes; 4-H Youth Development; and Community & Economic Development. In each of these areas there will be the ability for information, research, and outreach with regard to the environment to reach more Kentuckians and help provide better and healthier training and education to our citizens. As we provide services in all of Kentucky's counties, I see promise in joining forces with this new initiative to actively engage the Commonwealth in environmental health and stewardship activities. I will encourage my colleagues to collaborate with this new Center to expand our programs in forward-thinking and creative ways, which will no doubt strengthen the university's research mission and portfolio.

The Center will offer a wonderful opportunity for us to connect and synergize with faculty, staff, and students across the campus on environment-related activities, and I will enthusiastically encourage our organization to support the Center and to participate in its programs.

Sincerely,



Laura Stephenson
Associate Dean & Director, Cooperative Extension Service





September 25, 2020

Erin N. Haynes, DrPH, MS
Kurt W. Deuschle Professor in Preventive Medicine and Environmental Health
Chair, Department of Epidemiology & Department of Preventive Medicine and
Environmental Health
College of Public Health
University of Kentucky
Lexington, KY 40536

Dear Dr. Haynes,

As the Sustainability Officer for the University of Kentucky, I strongly endorse the proposal to establish the UK Center for the Environment. The Center for the Environment, as proposed, provides a unique opportunity for the University of Kentucky to take the lead in this area for the Commonwealth and beyond. The vision for this Center as a leader in addressing environmental challenges will strongly complement the programs and initiatives the Office of Sustainability has developed over the past 10 years. The proposed Center and my office have many shared goals and a common vision regarding the importance of exploring, utilizing, and promoting environmentally-sound and sustainable measures on our campus and throughout the Commonwealth. I am particularly excited about the potential research and teaching collaborations that would surely emerge between this Center and my office.

Through our Sustainability Strategic Plan, my office strives to promote operational and administrative programs and policies that balance ecological integrity and economic prosperity on a foundation of social justice, diversity, and inclusion. Over the past decade, I have worked to create connections with and between the people and programs needed to effectively pursue this goal. In the mission and vision proposed for this new Center, I see a tremendous opportunity to connect and focus research efforts in a similar way; serving as a hub and amplifier for these research pursuits much as we strive to do so in the areas of operations, engagement, and administration. I see numerous programs where the formation of new Center will positively impact joint growth of our organizations and spur environmental stewardship throughout our campus and beyond.

I believe this opportunity is strongest and most exciting where our research explores the intersections between human health and well-being and the environment. I anticipate that the university, and community at-large, will greatly benefit from this initiative, and most importantly, that the health of our campus community and the overall health of Kentuckians will be improved.

Additionally, the Center will offer a wonderful opportunity for us to connect and synergize with faculty, staff, and students across the campus on environment-related activities.

Finally, I recently accepted an appointment to serve as an Assistant Director for the Tracy Farmer Institute for Sustainability and the Environment and I am excited about the potential interplay between the ISE and the proposed Center for the Environment and the enhanced impact that would surely result.

Sincerely,

A handwritten signature in blue ink, appearing to read "Shane Tedder". The signature is fluid and cursive, with the first name "Shane" and last name "Tedder" clearly distinguishable.

Campus Sustainability Officer &
Assistant Director, Tracy Farmer Institute for Sustainability and the Environment
University of Kentucky
Office 859.257.0014 | Mobile 513-582-8014
shane.tedder@uky.edu | www.uky.edu/sustainability

Pronouns: he, him, his

Black Lives Matter, Love is Love, No Person is Illegal



College of Agriculture, Food & Environment
Department of Veterinary Science
Veterinary Diagnostic Laboratory

September 23, 2020

Erin N. Haynes, DrPH, MS
Kurt W. Deuschle Professor in Preventive Medicine and Environmental Health
Chair, Department of Epidemiology & Preventive Medicine and Environmental Health
College of Public Health
University of Kentucky
Lexington, KY 40536

Dear Dr. Haynes:

After reading the impressive proposal, I strongly endorse establishing the UK Center for the Environment. Such a Center will provide a unique opportunity for the University of Kentucky to take the lead in this area for the Commonwealth and will provide a bridge to improve our research, providing critical information for the health of our Kentucky animals. As Immediate Past President of the American Veterinary Epidemiology Society and an active member of the national One Health Initiative team (<https://onehealthinitiative.com/about/>), I also see this new Center as a catalyst for promoting the One Health philosophy here at UK toward improved health of humans, animals, and the environment.

Further, I see enormous opportunity for our two centers to collaborate on programs that advance this preparedness. The **University of Kentucky Veterinary Diagnostic Laboratory (UKVDL)** is a leading, full service veterinary diagnostic services laboratory as well as a research and teaching laboratory in the United States. The Center will enable collaborative research on topics such as the threat of environmental intoxicants and infectious agents which negatively impact food safety and security. Furthermore, establishing this Center will strengthen our competitiveness for sponsored research opportunities. UKVDL develops and applies state-of-the-art diagnostic methodology to improve animal health and marketability, to protect the public health, and to help preserve the human-animal bond through the principles of One Health. This new Center will provide a resource to improve our services and better fulfill our animal health and human health mission.

I am convinced that the UK Center for the Environment would serve as a powerful force for recruiting outstanding faculty, staff, and students who are interested in studying environmental factors related to the health of Kentucky's signature horse industries, cattle production (KY is #1 in cattle east of the Mississippi River), Kentucky's poultry industry, companion animal health and beyond. Additionally, the Center will offer a platform for us to connect and synergize with faculty, staff, and students across the campus on environment-related activities. I will enthusiastically encourage my Center to participate in its programs. Finally, I am extremely confident in the Committee Chair, Dr. Erin Haynes, her team, and the extensive UK Support for this initiative.

Sincerely,

Craig N. Carter, DVM PhD
Director & Professor, Epidemiology
craig.carter@uky.edu

see blue.

1490 Bull Lea Road | P.O. Box 14125 | Lexington, KY 40512-4125 | P: 859-257-8283 | F: 859-255-1624 | www.vdl.uky.edu

An Equal Opportunity University

Erin N. Haynes, DrPH, MS
Kurt W. Deuschle Professor in Preventive Medicine and Environmental Health
Chair, Department of Epidemiology & Department of Preventive Medicine and Environmental Health
College of Public Health
University of Kentucky
Lexington, KY 40536

Dear Dr. Haynes:

As Dean of the College of Medicine, I strongly endorse establishing the UK Center for the Environment. Such a center would provide a unique opportunity for the University of Kentucky to take the lead in this area both for the Commonwealth and beyond. The Center's primary vision to address environmental challenges parallels the mission of the College of Medicine. One of our key issues is the presence of environmental exposures on the health of Kentuckians. The College of Medicine has a rigorous, multi-faceted research program, and the newly established Center for the Environment will provide a much needed and crucial bridge to further expand our programs and collaborations for a healthier Commonwealth.

The College of Medicine currently has a strong and dynamic research portfolio within its own departments as well as in collaboration with other departments across the university. I see the promise for growth especially within the newly established Alliance Initiative. With support from the Office of the Vice President for Research, UK HealthCare, and in collaboration with the Center for Clinical and Translational Science, the College of Medicine has launched the Alliance initiative to provide a new opportunity and resources to support innovative, collaborative research projects with investigator-initiated clinical studies. These studies have been developed by multi-disciplinary teams, inclusive of colleges and centers across the University of Kentucky. Our initiatives create multiple teams bringing new discoveries to clinical care, creating a research as well as an educational opportunity for all learners to see first-hand how rapid approaches bring discovery and technology to patients. I see promise for the newly established Center for the Environment to further expand the Alliance initiative.

I would be eager to promote this Center and share the benefits with our research faculty, research assistants, and fellowship recipients. It will surely aid in our productivity and commitment to informing people and helping to find appropriate preventative measures. Additionally, it will aid in the University's competitiveness in extramurally funded research. The College is especially excited about the Center impacting its Research Enrichment and Collaboration Help (REACH) program. REACH is unique in that it supports research projects that were previously submitted but did not receive external funding from federal, state, international, or private nonprofit entities. Its likelihood of funding on resubmission would increase with the acquisition of additional data or proof of concept, and this newly formed Center could be a potential dramatic step forward in

helping get environmentally focused projects funded. The impact from this Center will help promote the University's mission and reputation throughout the world. I also see an opportunity for it to enhance the recruitment and retention of faculty and staff, not only for the College of Medicine but across the entire campus. Finally, the Center will offer a wonderful opportunity for us to connect and synergize with faculty, staff, and students across the campus on environment-related activities, and I will enthusiastically encourage my department to participate in the Center's programs.

Sincerely,

A handwritten signature in blue ink, appearing to read 'R. DiPaola', with a long horizontal flourish extending to the right.

Robert S. DiPaola, MD
Dean, College of Medicine
University of Kentucky



HealthCare
MARKEY CANCER CENTER



A Cancer Center Designated by the
National Cancer Institute

B. Mark Evers, MD
Director, Markey Cancer Center
Professor and Vice-Chair for Research,
Department of Surgery
Markey Cancer Foundation Endowed Chair
Physician-in-chief, Oncology Service Line
mark.evers@uky.edu

University of Kentucky
Markey Cancer Center
800 Rose Street
CC140 Ben F. Roach Building
Lexington, KY 40536-0093
859/323-6556
859/323-2074 Fax

September 1, 2020

Erin N. Haynes, DrPH, MS
Kurt W. Deuschle Professor in Preventive Medicine and Environmental Health
Chair, Department of Epidemiology & Preventive Medicine and Environmental Health
College of Public Health
University of Kentucky
Lexington, KY 40536

Dear Dr. Haynes:

As Director of the Markey Cancer Center, I strongly endorse establishing the UK Center for the Environment. The Center for the Environment provides a unique opportunity for the University of Kentucky to take the lead in this area for the Commonwealth and beyond. The vision for this Center as a leader in addressing environmental challenges will work well in collaboration with Markey to address cancer research that may be associated with environmental issues and exposures. Research conducted at Markey focuses on Kentucky's most serious cancer burdens and emphasizes finding solutions that will directly impact the "distressed" Appalachian Kentucky region, where cancer incidence and mortality rates surpass those for the entire state and where environmental exposures may occur. The MCC brings unique, basic, clinical, and population research strengths to this mission, and this newly developed Center for the Environment will provide a bridge to improve our research, providing critical information for the health of our Kentuckians.

The Cancer Center currently operates four distinct and critical research programs where we aim to deliver transformative and interventional research to an important, underserved, and priority population. The contributions from these programs are the cornerstones of national efforts to conquer cancer through discovery, clinical translation, cancer prevention, and community outreach. The Center for the Environment will provide Markey with a rich and dynamic research environment that will only be enhanced by our strong commitment to research in our local and regional environment. With the initiation of the new Center, researchers in the Cancer Prevention and Control Program, the Cancer Cell Biology and Signaling Program, Drug Discovery, Delivery, and Translational Therapeutics Program, Genomic Instability, Epigenetics and Metabolism Program will have more opportunity to improve our research platforms. UK is uniquely poised to provide such collaboration, having an NCI Designated Cancer and Medical Center in close proximity, creating a truly rich research environment. Together, we can help provide creative insight and aid in solutions for some of the Commonwealth's most pressing problems. Furthermore, establishing this Center will strengthen our competitiveness for sponsored research opportunities.

I also see opportunity in enhancing Markey's newly established educational pipeline program, the MCC Appalachian Career Training in Oncology (ACTION) Program. As it was first established as the Career Training in Oncology Program (CTOP) in 2016, the program offers Appalachian Kentucky high school and undergraduate students enrolled at the University of Kentucky the opportunity to gain clinical, outreach and educational experiences in cancer research that will enrich their interest in pursuing a cancer-focused career.

The UK Center for the Environment could serve as a direct link to recruiting students who are interested in looking at environmental factors in cancer incidence. Additionally, the Center will offer a wonderful platform for us to connect and synergize with faculty, staff, and students across the campus on environment-related activities, and I will enthusiastically encourage my Center to participate in its programs.

Sincerely,

A handwritten signature in cursive script that reads "B. Mark Evers". The signature is written in black ink and is positioned below the word "Sincerely,".

B. Mark Evers, M.D.



University of Kentucky
UK Superfund Research Center
599 Wethington Health Science Building
900 South Limestone Street
Lexington, KY 40536-0200
P: 859-218-1343
F: 859-257-1811
www.uky.edu/Research/Superfund

August 7, 2020

Erin N. Haynes, DrPH, MS
Kurt W. Deuschle Professor in Preventive Medicine and Environmental Health
Chair, Department of Epidemiology & Department of Preventive Medicine and Environmental Health
Deputy Director, NIEHS Center for Appalachian Research in Environmental Sciences (UK-CARES)
College of Public Health
University of Kentucky
Lexington, KY 40536

Dear Dr. Haynes,

I strongly endorse establishing the UK Center for the Environment. The Center provides a unique opportunity for UK to take the lead in this area for the Commonwealth and beyond. The mission of the Center is closely aligned with the ongoing research within our college and the NIEHS-funded UK Superfund Research Center. Many of our faculty are currently collaborating with a multitude of colleges across campus on environment-related programs. The Center will aid in current and future collaborations by providing a comprehensive hub for environment-related activities, initiatives, and collaborative research. Establishing this Center will strengthen our university's competitiveness for sponsored research opportunities.

The newly established Center for the Environment will provide a platform for faculty, staff, and students to engage in cross-disciplinary environment-related research. I look forward to having this Center come into fruition.

Sincerely,

Bernhard Hennig, PhD, RD
Professor of Nutrition and Toxicology
College of Agriculture, Food and Environment
Deputy Director, University of Kentucky Superfund Research Center



Room 114 C.E. Barnhart Building
1398 Nicholasville Road
University of Kentucky
Lexington, Kentucky 40506-0059
Telephone: (859) 218-2227

September 28, 2020

Erin N. Haynes, DrPH, MS
Kurt W. Deuschle Professor in Preventive Medicine and Environmental Health
Chair,
Department of Epidemiology & Department of Preventive Medicine and Environmental Health
College of Public Health
University of Kentucky
Lexington, KY 40536

Dear Dr. Haynes:

As Directors of the Central Appalachian Regional Education and Research Center (CARERC), we strongly endorse establishing the University of Kentucky Center for the Environment. The Center for the Environment provides an opportunity for the University to pull together expertise across our campus to focus on improving environmental quality for the Commonwealth and beyond. The vision for the Center aligns well with the goals of the CARERC.

The UK CARERC is one of 18 NIOSH/CDC-funded occupational safety and health training programs in the United States. CARERC combines the academic resources of five colleges at the University of Kentucky and two colleges at Eastern Kentucky University to provide valuable resources for occupational safety and health research and training. We see great potential for this newly established Center to offer benefits both to researchers on campus and to our partnering universities across Central Appalachia.

We anticipate collaborating with the Center to host joint symposia and creating networking opportunities to expand our University's growing interest in environmental health. Additionally, the Center for the Environment will provide excellent opportunities for us to connect with faculty, staff, and students across the campus on environment-related activities. We look forward to having our Center as a partner in this Center.

Sincerely,

Wayne T. Sanderson, PhD, CIH
Director

Steven R. Browning, MSPH, PhD
Deputy Director



University of Kentucky
College of Medicine
Center on Drug and Alcohol Research
845 Angliana Avenue
Lexington, KY 40508
P: 859-257-6485
F: 859-257-5232
www.uky.edu

August 24, 2020

Erin N. Haynes, DrPH, MS
Professor and Chair, Department of Epidemiology
Interim Chair, Department of Preventive
Medicine and Environmental Health
College of Public Health
University of Kentucky
Lexington, KY 40536

Dear Dr. Haynes:

As Director of the Center on Drug and Alcohol Research, I strongly endorse establishing the UK Center for the Environment. The Center for the Environment provides a unique opportunity for UK to take the lead in this area for the Commonwealth and beyond. The vision for this Center to be a leader in addressing environmental challenges will work well in collaboration with CDAR to address research in the biological, psychological, sociopolitical, and clinical aspects of substance abuse and related behavior that may be associated with environmental issues and exposures. Specifically, in CDAR's Behavioral Health Outcome Studies, I see opportunity in looking at the incidence of alcohol and substance abuse related to environmental factors in the community. As CDAR conducts federally-funded and state-funded research on substance abuse and related problems in areas of intimate violence, criminal justice settings, and characteristics of rural substance use, this new environmental Center will provide a plethora of new opportunities for CDAR's faculty and associates to expand research studies and projects. Together, we can help provide creative insight and aid in solutions for some of the Commonwealth's most pressing problems. Establishing this Center will only strengthen our competitiveness for sponsored research opportunities.

Additionally, the Center will offer a wonderful opportunity for us to connect and synergize with faculty, staff, and students across the campus on environment-related activities and I will encourage my Center to participate in its programs.

Sincerely,

A handwritten signature in black ink that reads "Sharon L. Walsh, Ph.D.".

Sharon L. Walsh, Ph.D.
Director, Center on Drug and Alcohol Research

see blue.

An Equal Opportunity University



Sanders-Brown Center on Aging

Linda J. Van Eldik, PhD
Director
Sanders-Brown Center on Aging

101 Sanders-Brown Building
800 S. Limestone
Lexington, KY 40536-0230

Phone: 859-257-5566
FAX: 859-323-2866
Email: linda.vaneldik@uky.edu
<https://sbcoa.med.uky.edu/>

August 27, 2020

Erin N. Haynes, DrPH, MS
Professor and Chair, Department of Epidemiology
Interim Chair, Department of Preventive Medicine and Environmental Health
College of Public Health
University of Kentucky
Lexington, KY 40536

Re: Center for the Environment

Dear Dr. Haynes:

As Director of the Sanders Brown Center on Aging, I strongly endorse establishing the UK Center for the Environment. The Center for the Environment provides a unique opportunity for the University of Kentucky to take the lead in this area of much needed research for the Commonwealth and beyond. The vision for the Center as a leader in addressing environmental challenges will work well in collaboration with the Sanders Brown Center on Aging (SBCoA) to address health research that may be associated with environmental issues and exposures especially in the elderly. SBCoA currently operates the National Institute on Aging-funded University of Kentucky Alzheimer's Disease Research Center (UK-ADRC), and over the past 35 years the UK-ADRC has developed a vigorous program in the clinical, neuropathological, educational, and research aspects of Alzheimer's disease and related dementias. We serve as a critical resource for the university, community, state, and nation. The UK-ADRC has been a pioneer in understanding the brain changes that are associated with the syndrome of dementia, and by collaborating with the Center for the Environment, we will be able to add environmental stressors and exposures in order to strengthen our research impact. I see great opportunity for the newly established Center for the Environment to offer benefits both to researchers on campus and to those who can be recruited from outside to carry out this novel research.

I am particularly excited about the creation of the UK Center for the Environment to add unique value to our other research programs at SBCoA. As we continue our research and clinical initiatives geared toward treating dementias, we also operate the Down Syndrome Aging & Alzheimer's Disease Study. In this project, SBCoA researchers follow people with Down syndrome as they get older to help understand why and who will develop dementia. We specifically look at those individuals who do not develop dementia, as we may then be able to learn how to prevent this from occurring in others. I see obvious points of future collaborations for our researchers to expand our mission in looking at environmental exposures and the incidence of Alzheimer's and Down syndrome. Together, we can help provide creative insight and hopefully find solutions to some of the Commonwealth's most pressing problems in our aging populations. Establishing the Center for the Environment will only strengthen our national competitiveness for sponsored research opportunities.

Additionally, establishment of the Center for the Environment will offer a wonderful opportunity for us to connect and synergize with faculty, staff, and students across the campus on environment-related activities, and I will enthusiastically encourage my Center to participate in its programs.

Sincerely,



Linda J. Van Eldik, PhD
Director, Sanders-Brown Center on Aging and Alzheimer's Disease Research Center
Dr. E. Vernon Smith and Eloise C. Smith Alzheimer's Research Endowed Chair
Professor, Department of Neuroscience
University Research Professor
University of Kentucky