



# ANNUAL EVALUATION OF THE PRESIDENT

Senate Council's Survey of Full-Time  
Faculty for Academic Year 2019-20

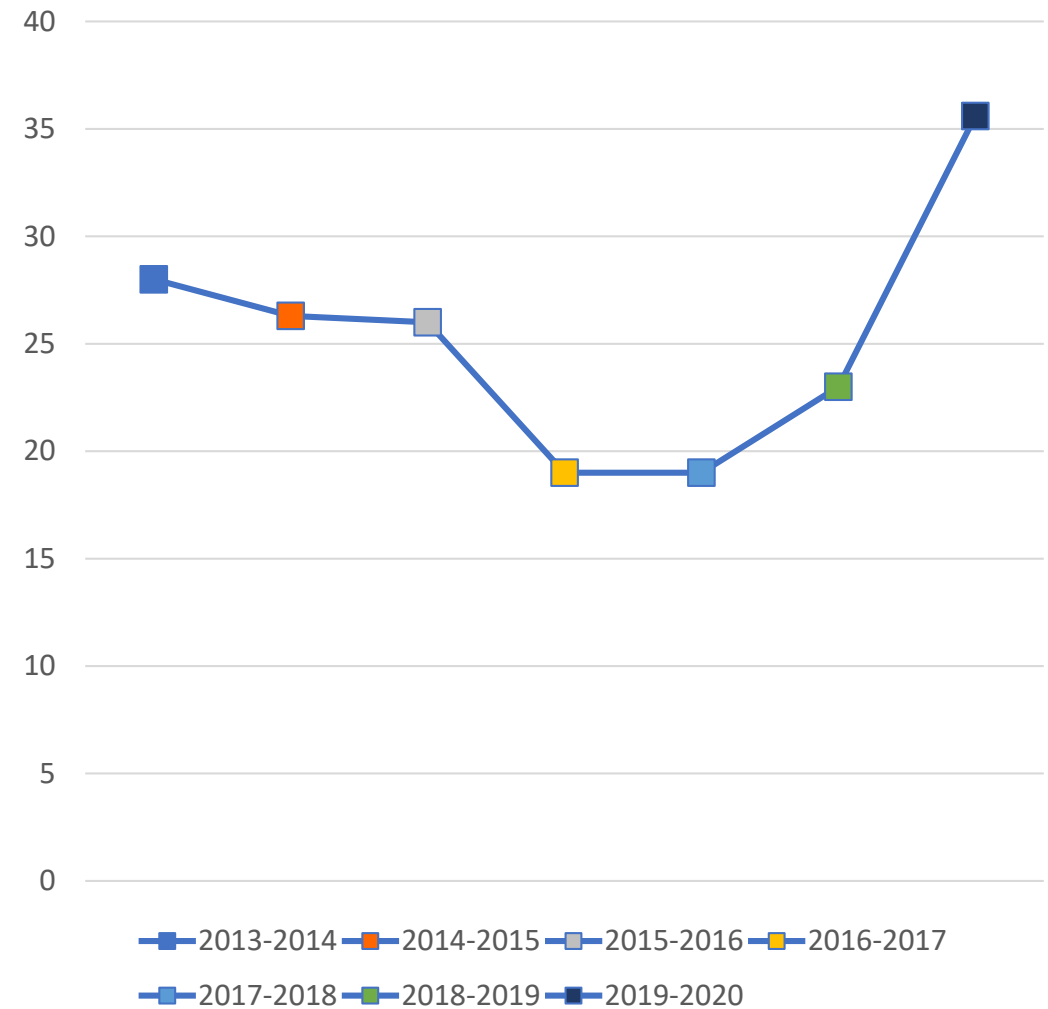


## Background

The Senate Council assisted in the annual evaluation of President Capilouto by surveying all full-time faculty during a four-week period, from April 7, 2020 to May 8, 2020.

There were 1088 responses for a response rate of 35.6%.

The results are summarized and compared with the results from the 2013-14, 2014-15, 2015-16, 2016-17, 2017-18, 2018-19, 2019-20 surveys in the slides that follow.



## Response Rate by College

COLLEGE	TOTAL FACULTY	RESPONSE RATE (%)	COLLEGE	TOTAL FACULTY	RESPONSE RATE (%)
Agriculture, Food & Environment	279	32.9	Honors College	11	18.1
Arts & Sciences	490	32.8	Health Sciences	77	25.9
Business & Economics (Gatton)	104	35.5	Law	32	40.6
Communication & Information	84	35.7	Library	50	32.0
Dentistry	70	38.5	Medicine	1174	38.1
Design	35	31.4	Nursing	72	34.7
Education	118	38.1	Pharmacy	63	34.9
Engineering	178	32.0	Public Health	63	39.6
Fine Arts	108	35.1	Social Work	32	37.5
Graduate School	14	50.0			



## President Survey About the Results – Response Scale

Respondents ranked the President on a 5-point Likert scale, with an option to not respond.

- 0 = Choose not to respond
- 1 = Strongly disagree
- 2 = Disagree
- 3 = Neither agree nor disagree
- 4 = Agree
- 5 = Strongly agree

For the following slides, responses can be read by moving from left to right

On the far left are responses of “1” (“Strongly disagree”)

On the far right are responses of “5” (“Strongly agree”)



## President Survey About the Results – Colors

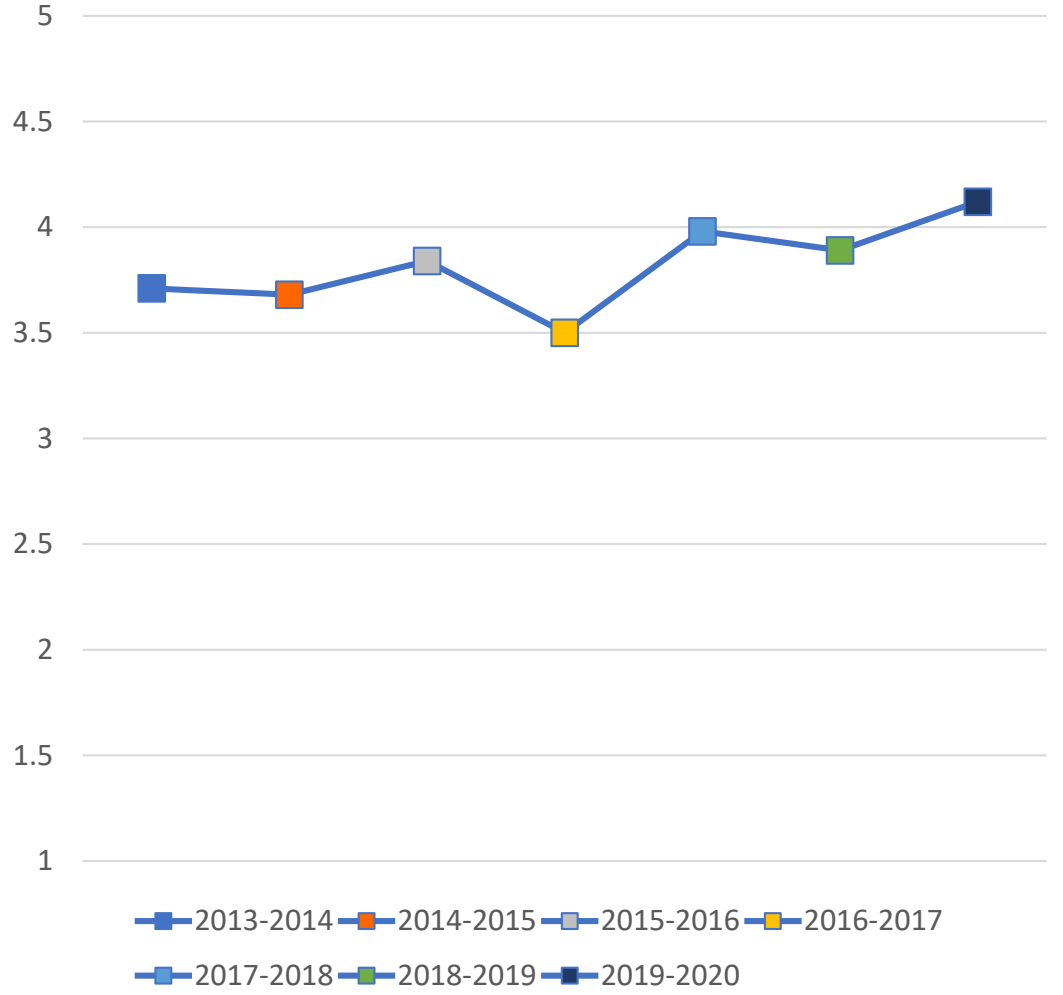
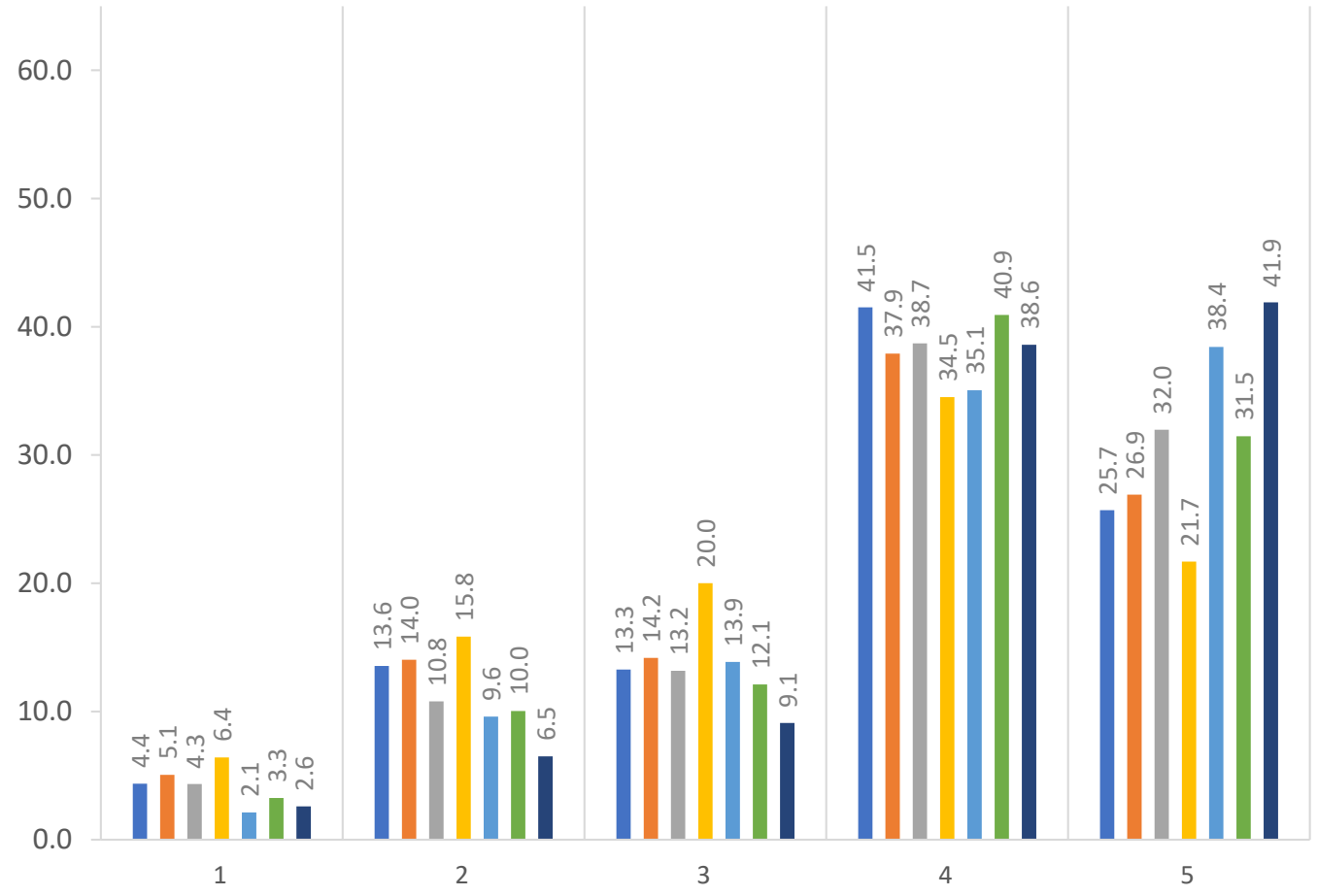
Colors indicate the year of the survey.

■ 2013-2014   ■ 2014-2015   ■ 2015-2016   ■ 2016-2017   ■ 2017-2018   ■ 2018-2019   ■ 2019-2020



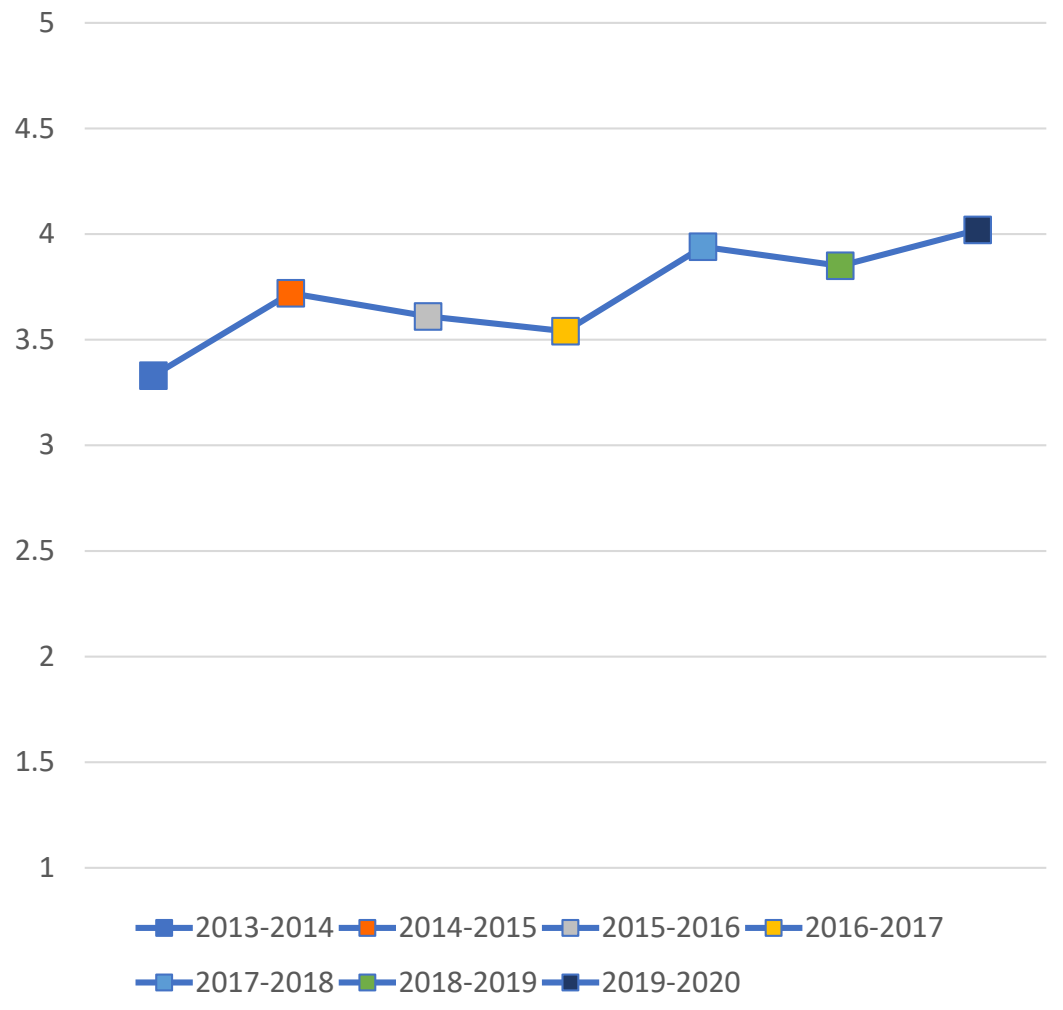
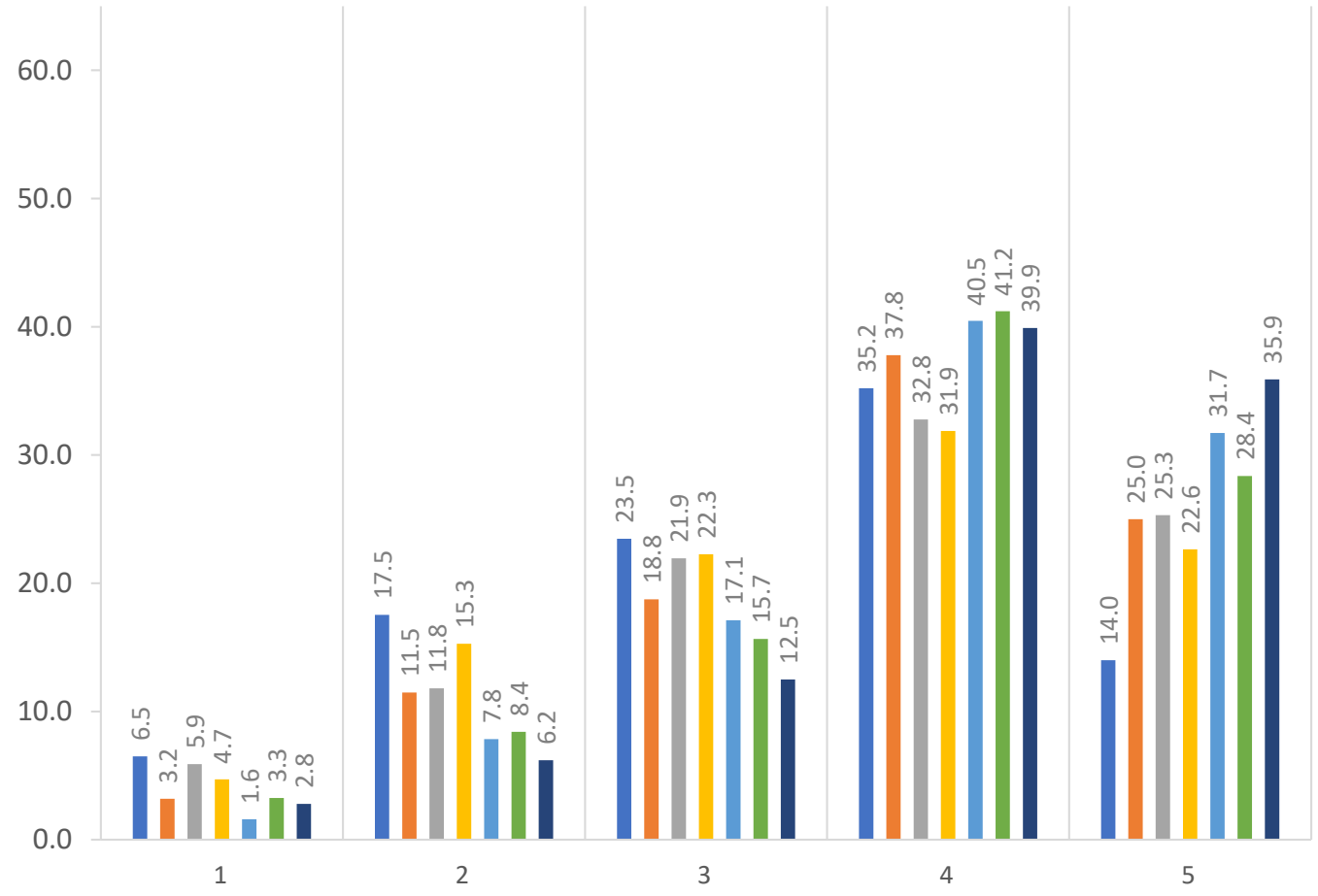
# During the 2019-20 Academic Year, the President Has Been Effective in... ...Communicating his plans for the future of the University

■ 2013-2014 ■ 2014-2015 ■ 2015-2016 ■ 2016-2017 ■ 2017-2018 ■ 2018-2019 ■ 2019-2020



# During the 2019-20 Academic Year, the President Has Been Effective in... ...Generating resources to implement the University mission successfully

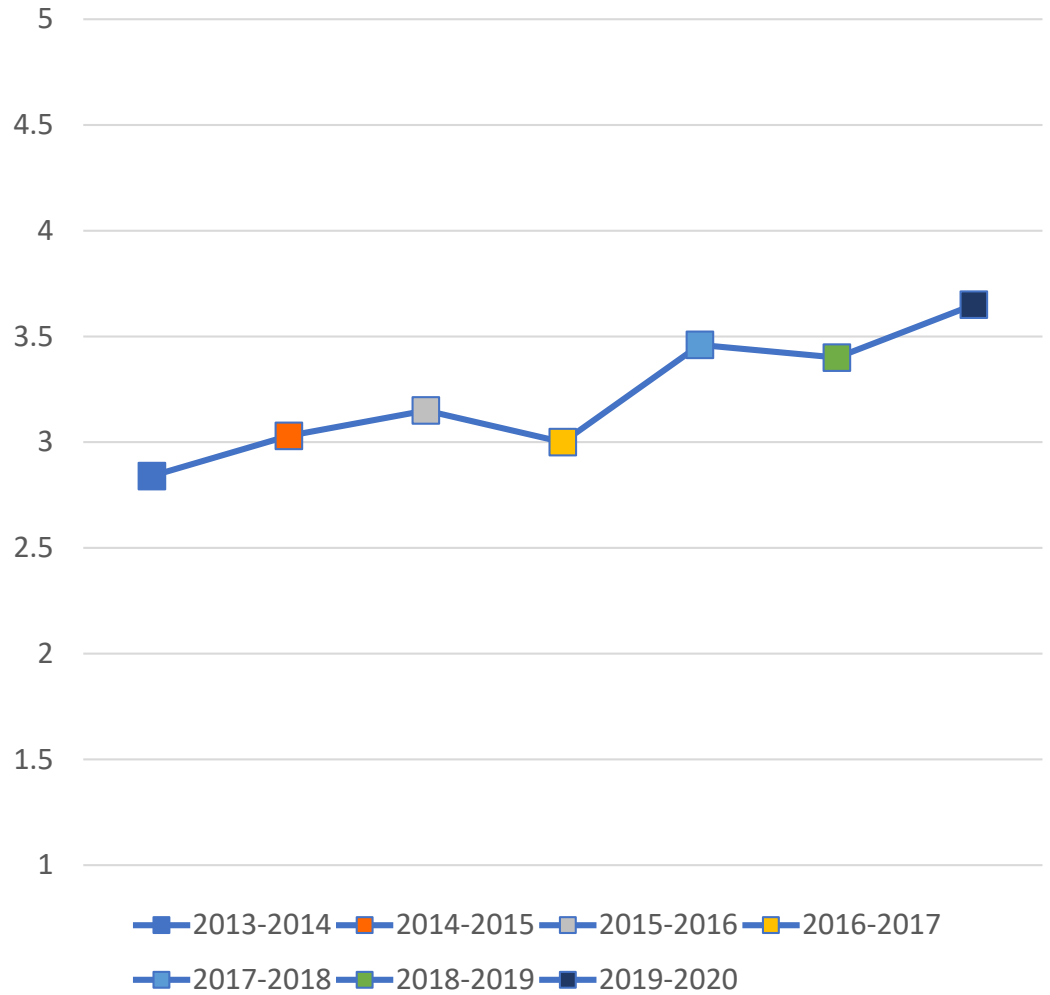
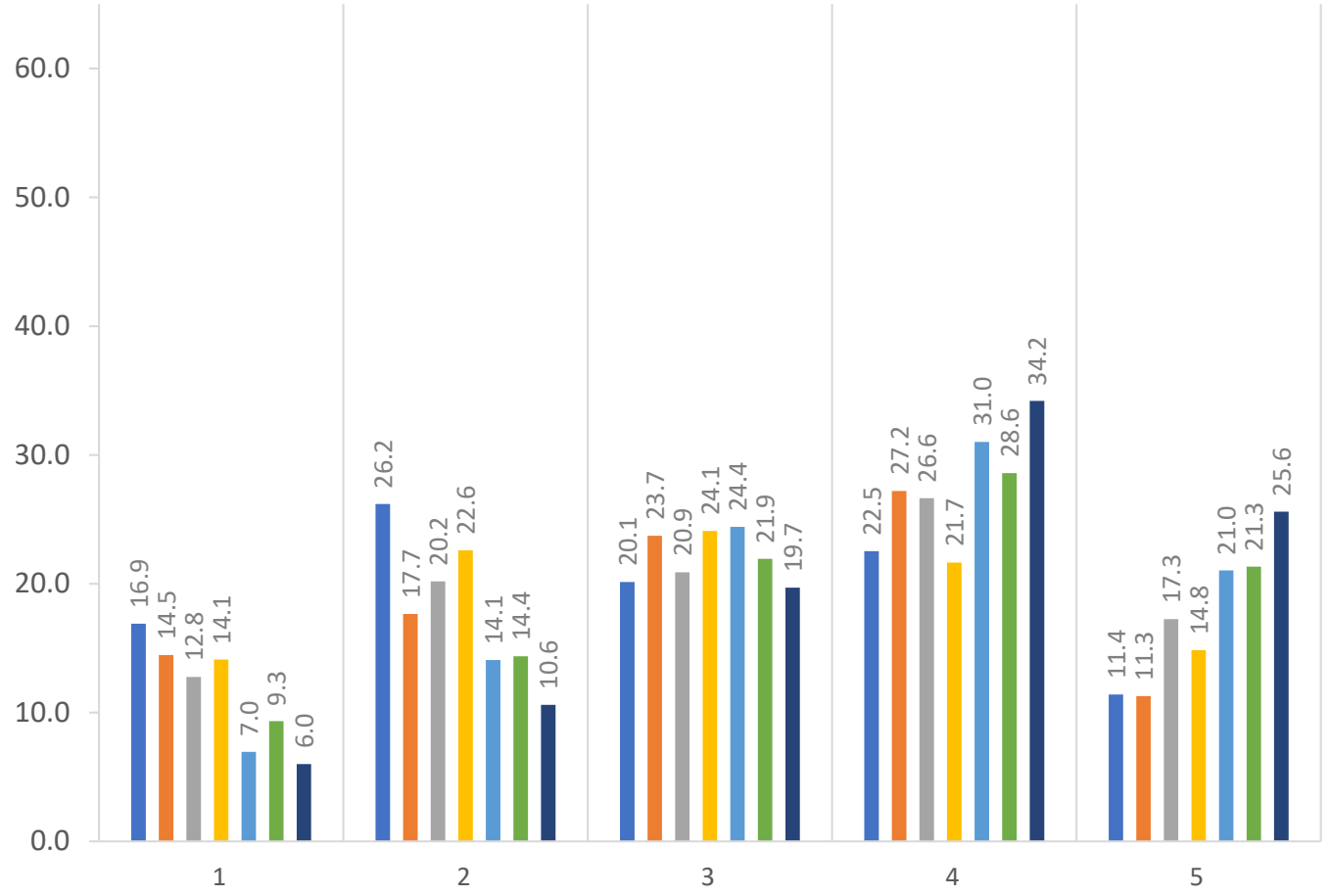
■ 2013-2014 ■ 2014-2015 ■ 2015-2016 ■ 2016-2017 ■ 2017-2018 ■ 2018-2019 ■ 2019-2020



# During the 2019-20 Academic Year, the President Has Been Effective in...

## ...Listening to faculty concerns

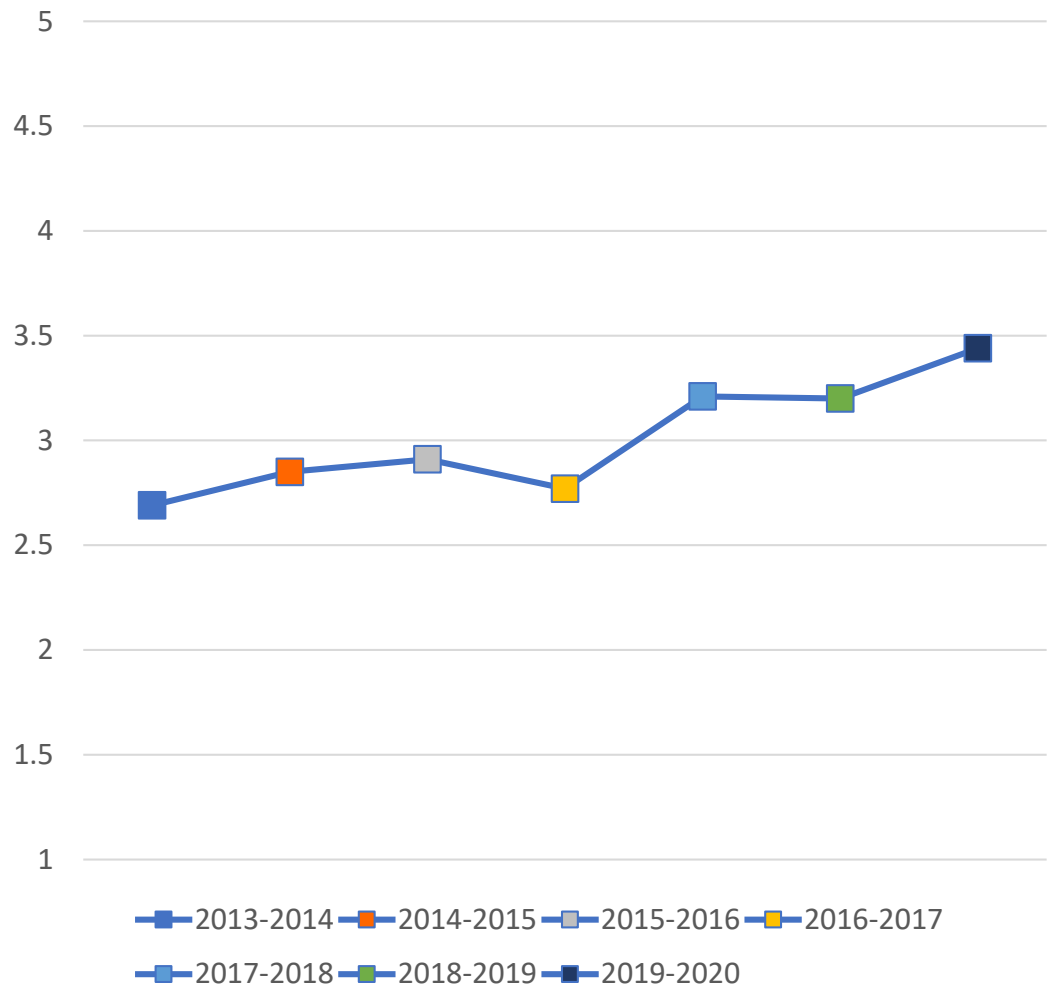
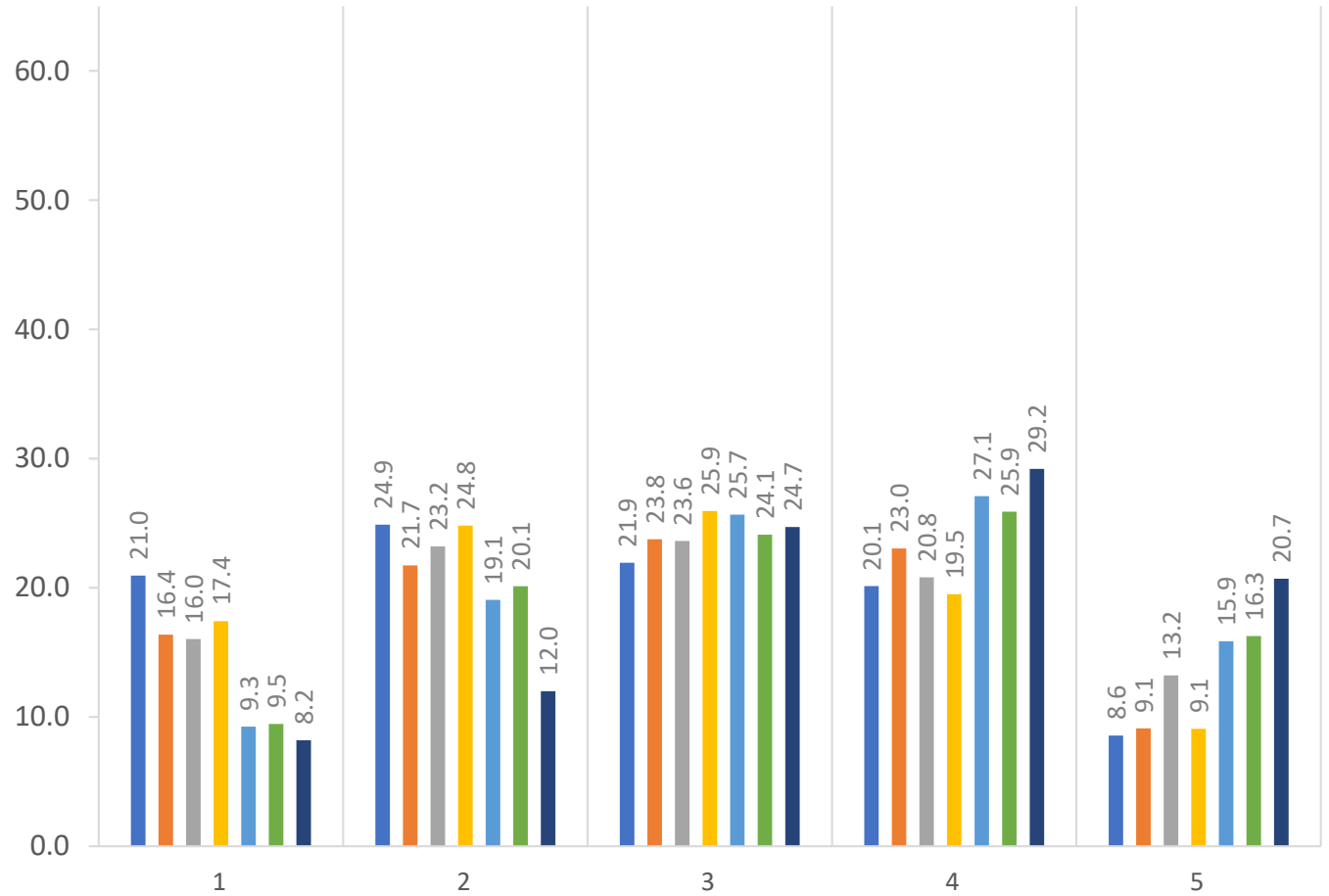
■ 2013-2014 ■ 2014-2015 ■ 2015-2016 ■ 2016-2017 ■ 2017-2018 ■ 2018-2019 ■ 2019-2020





# During the 2019-20 Academic Year, the President Has Been Effective in... ...Involving the faculty in decision-making

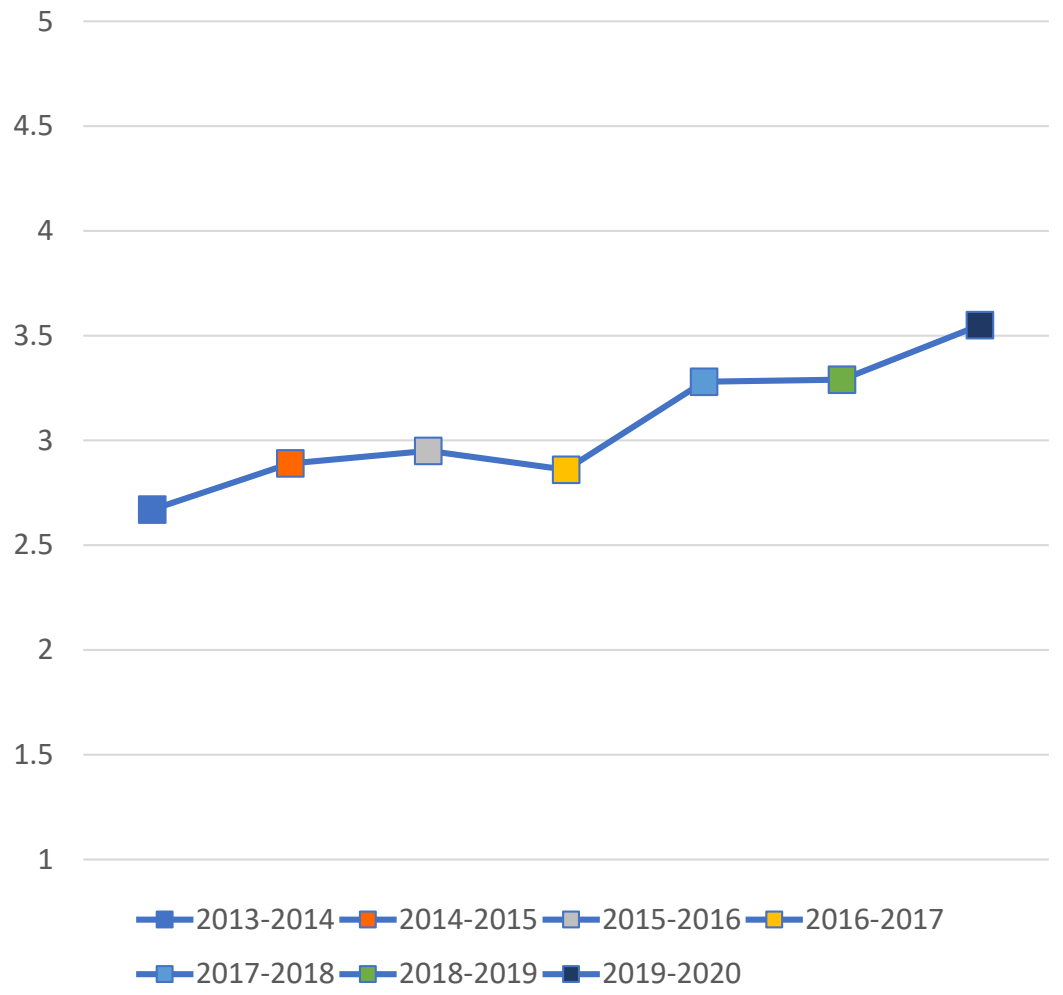
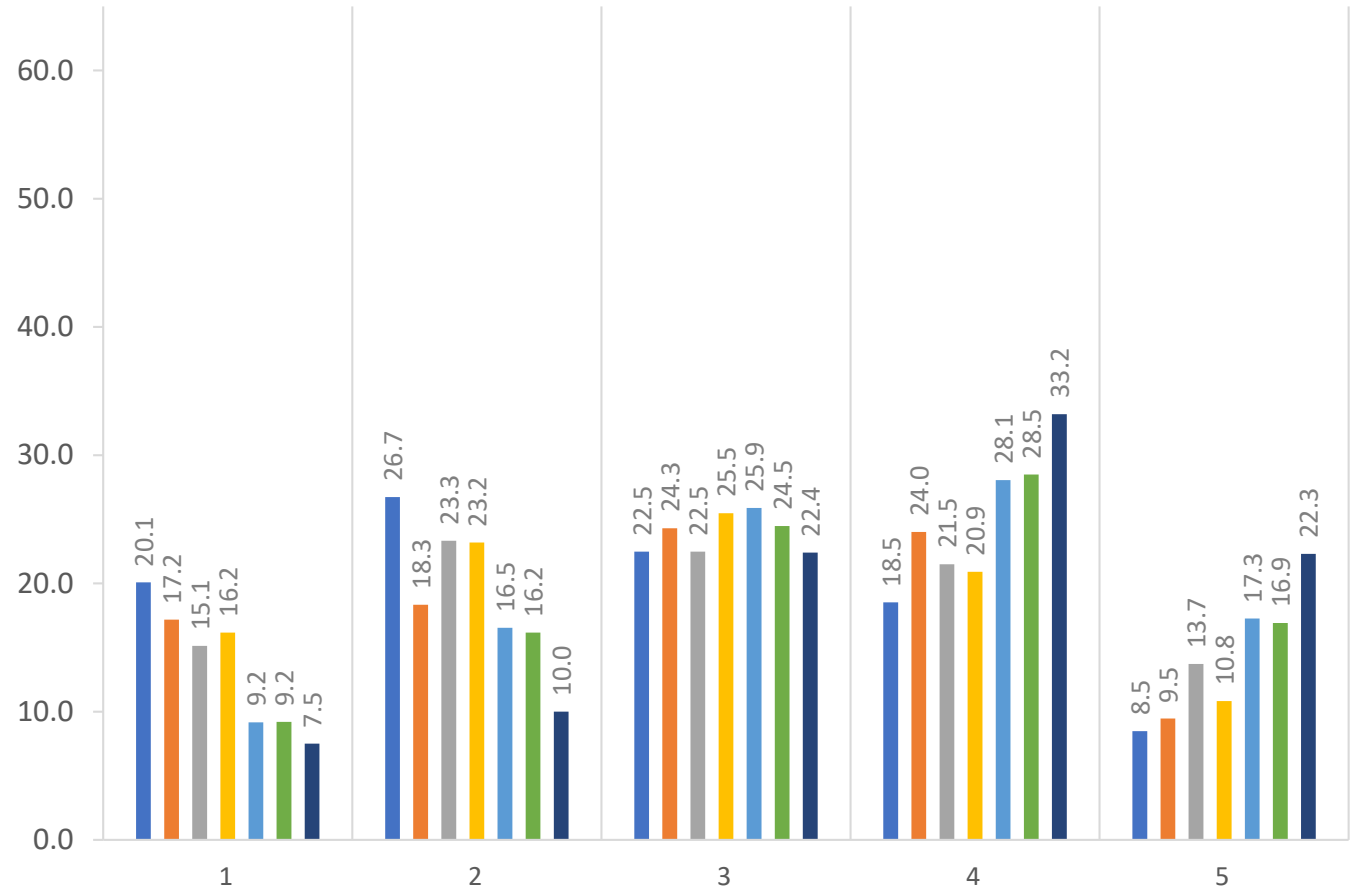
■ 2013-2014 ■ 2014-2015 ■ 2015-2016 ■ 2016-2017 ■ 2017-2018 ■ 2018-2019 ■ 2019-2020



# During the 2019-20 Academic Year, the President Has Been Effective in...

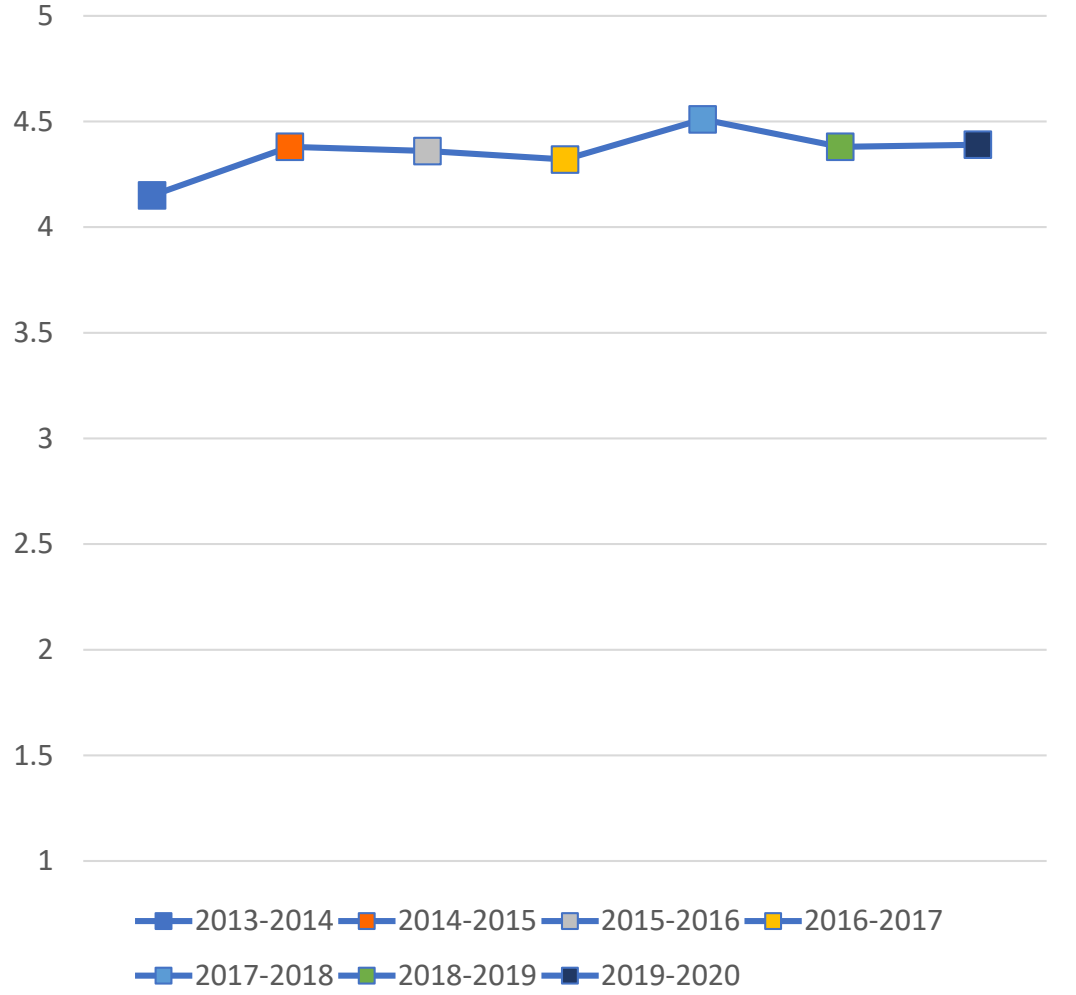
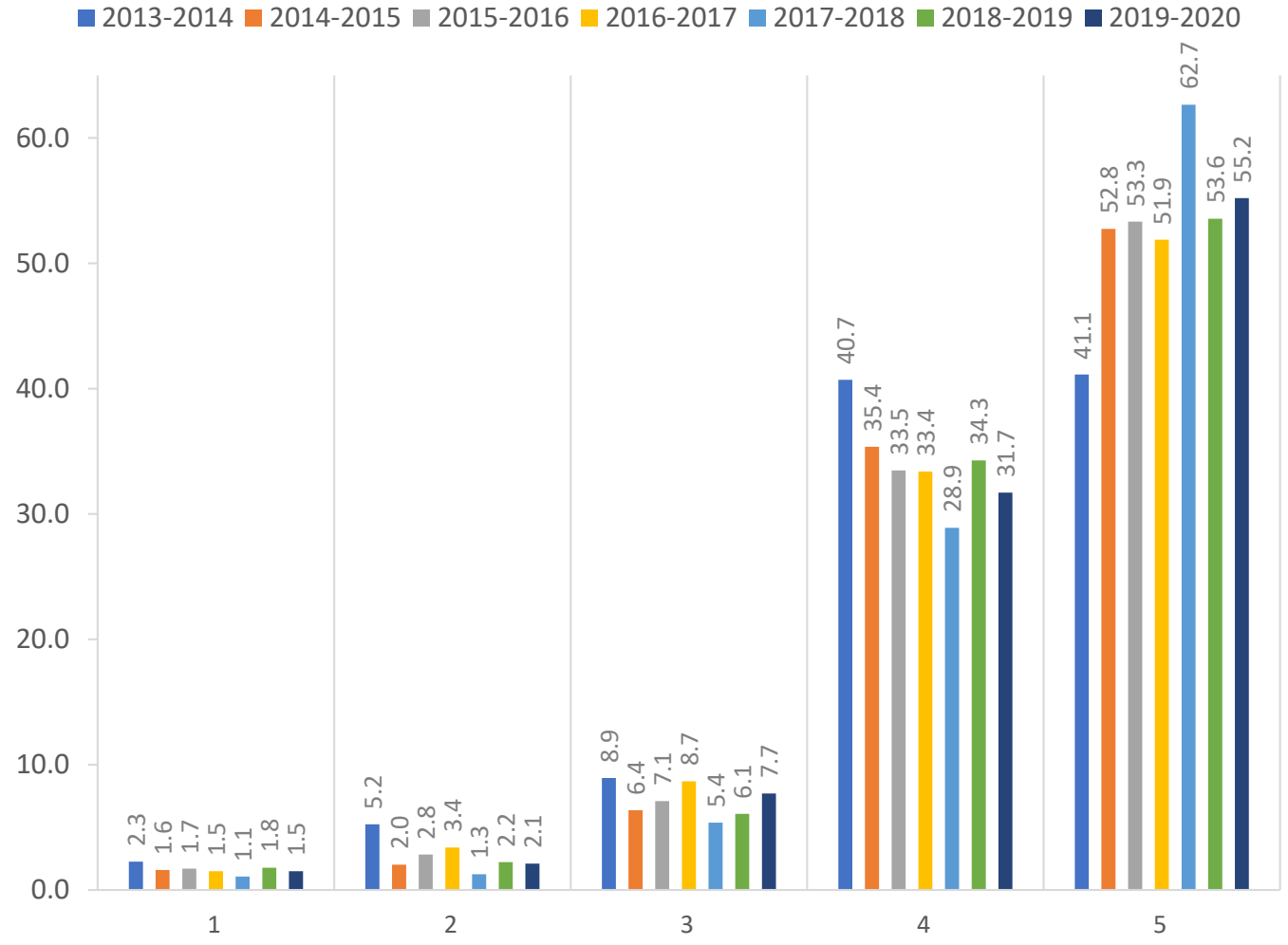
...Engaging the faculty in shared governance

■ 2013-2014 ■ 2014-2015 ■ 2015-2016 ■ 2016-2017 ■ 2017-2018 ■ 2018-2019 ■ 2019-2020



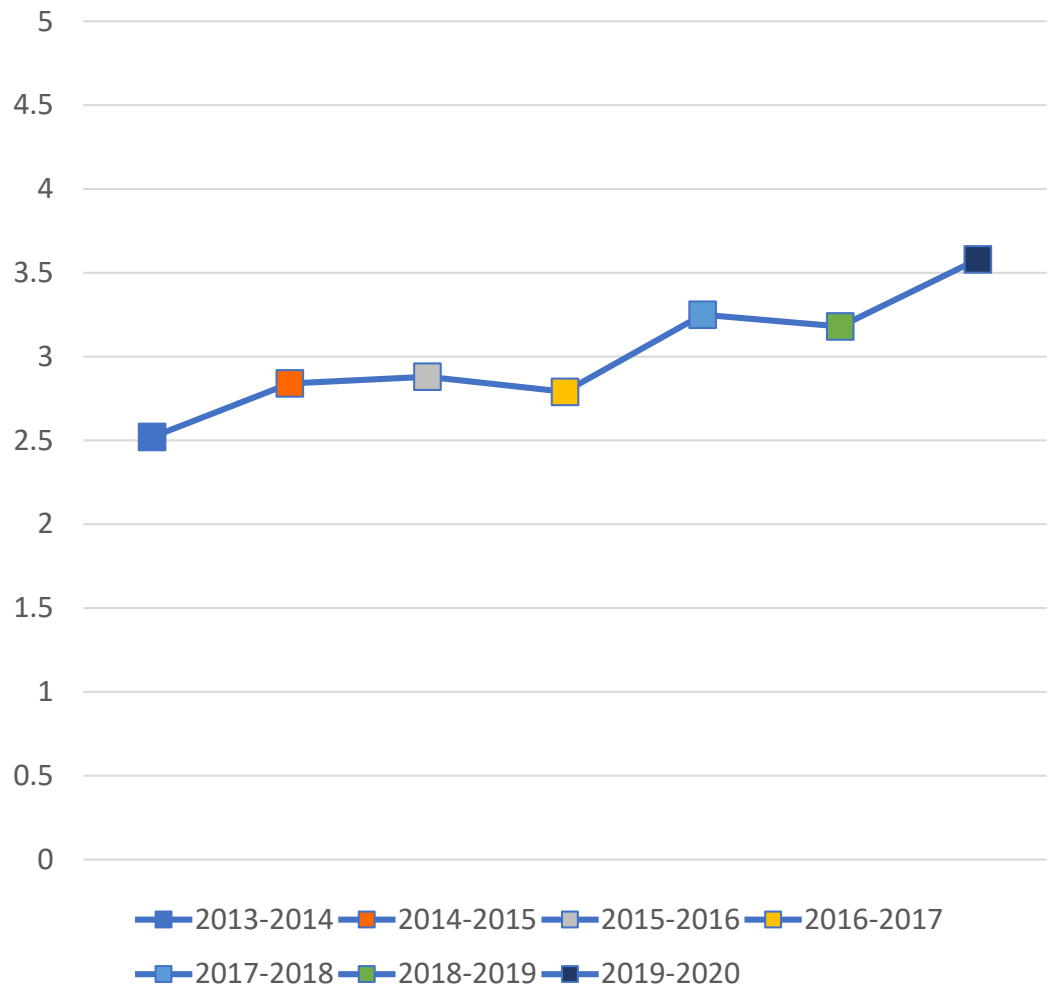
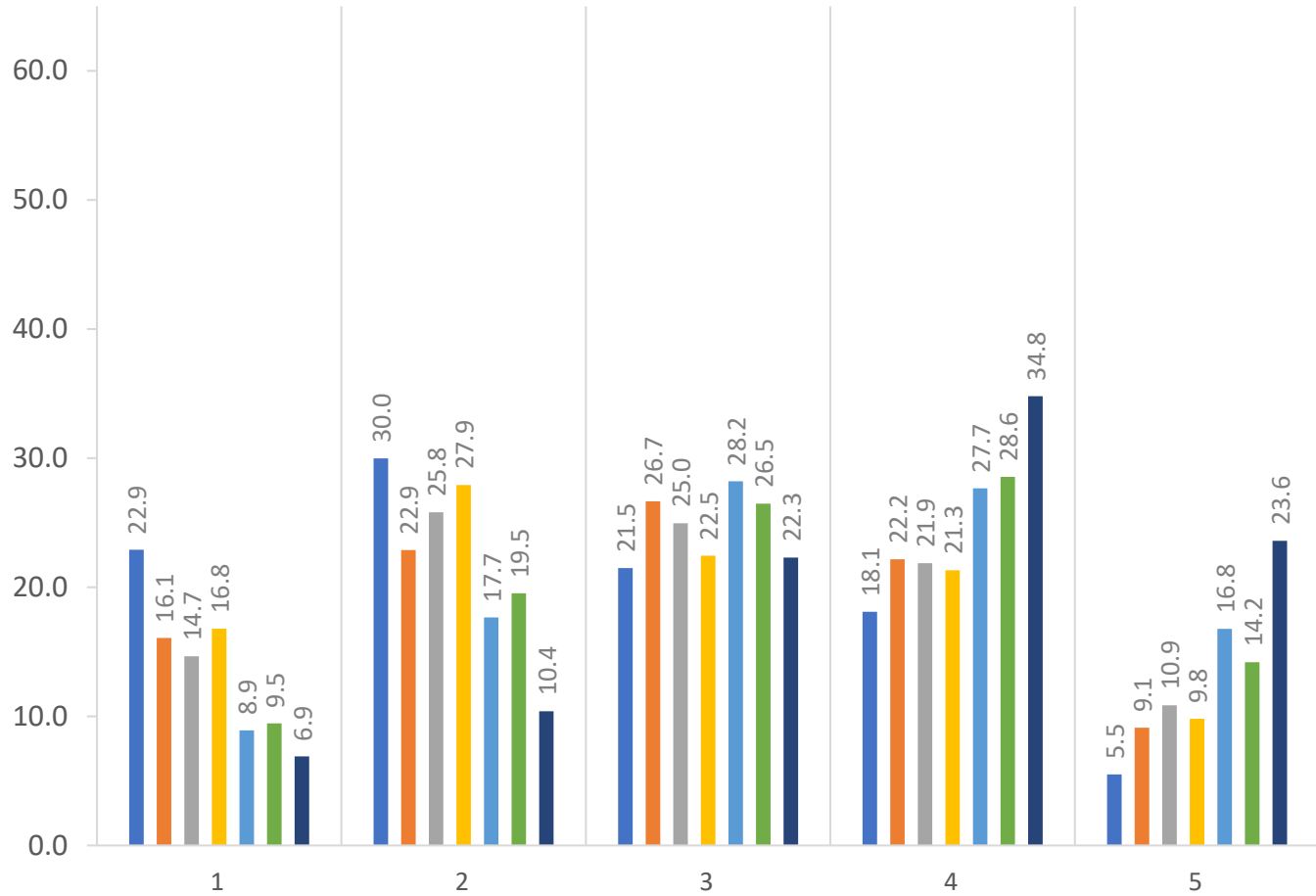
# During the 2019-20 Academic Year, the President Has Been Effective in...

## ...Building campus infrastructure



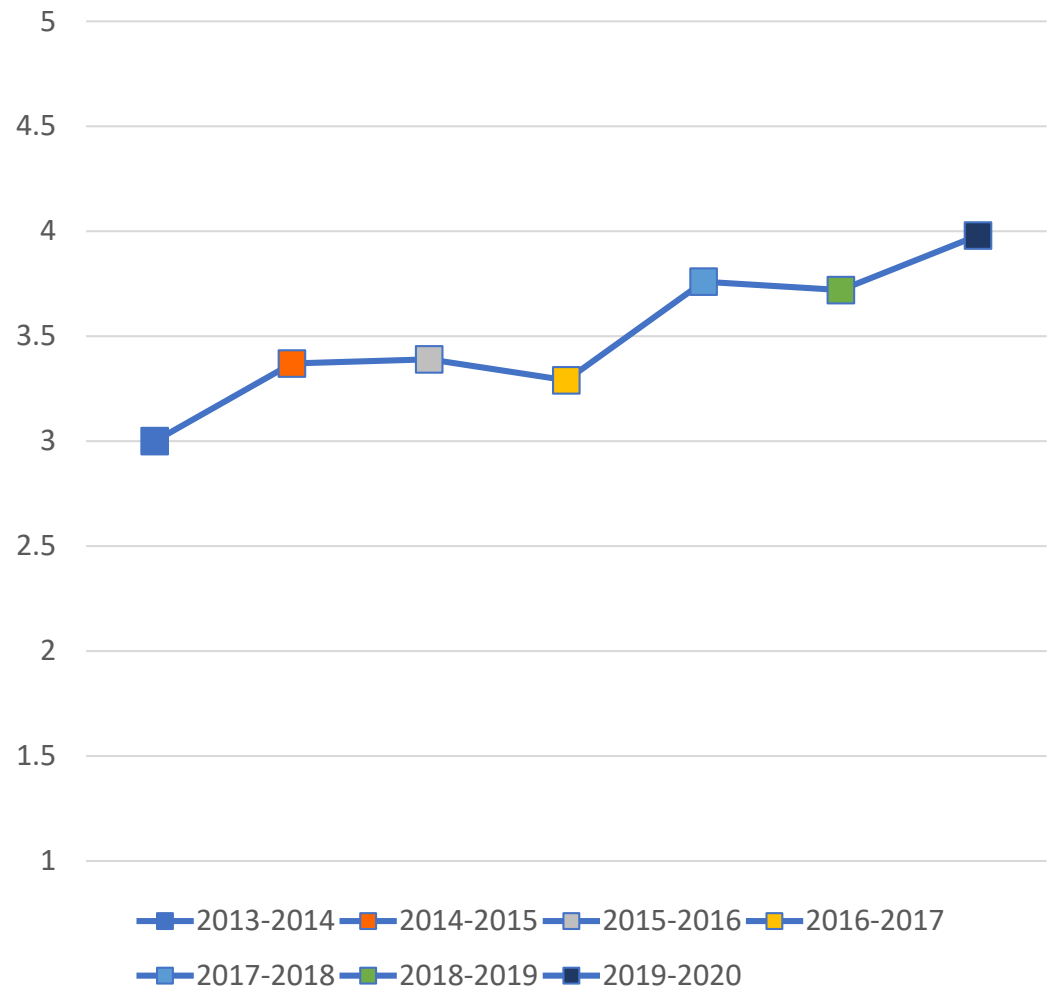
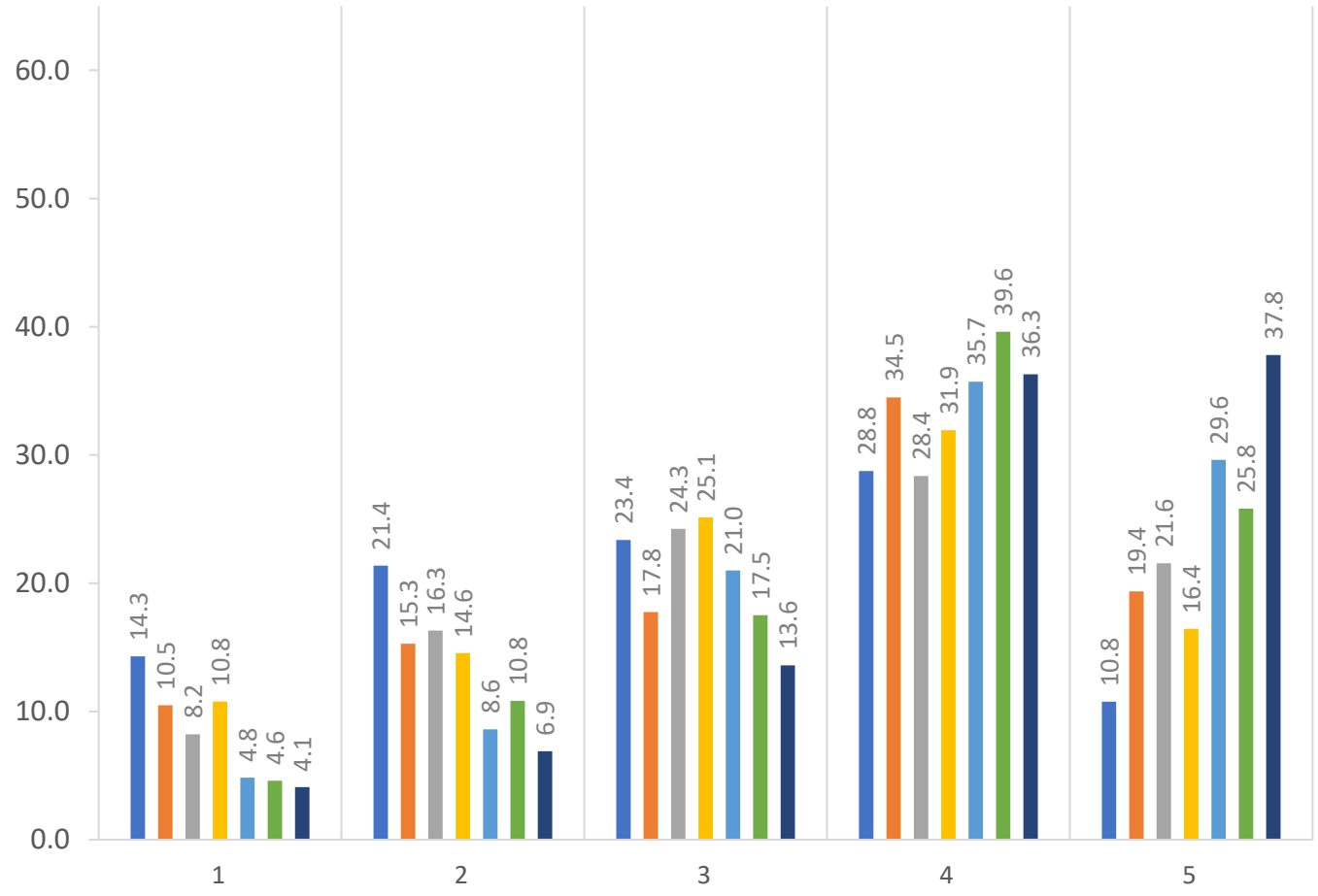
# During the 2019-20 Academic Year, the President Has Been Effective in... ...Building faculty morale

■ 2013-2014 ■ 2014-2015 ■ 2015-2016 ■ 2016-2017 ■ 2017-2018 ■ 2018-2019 ■ 2019-2020



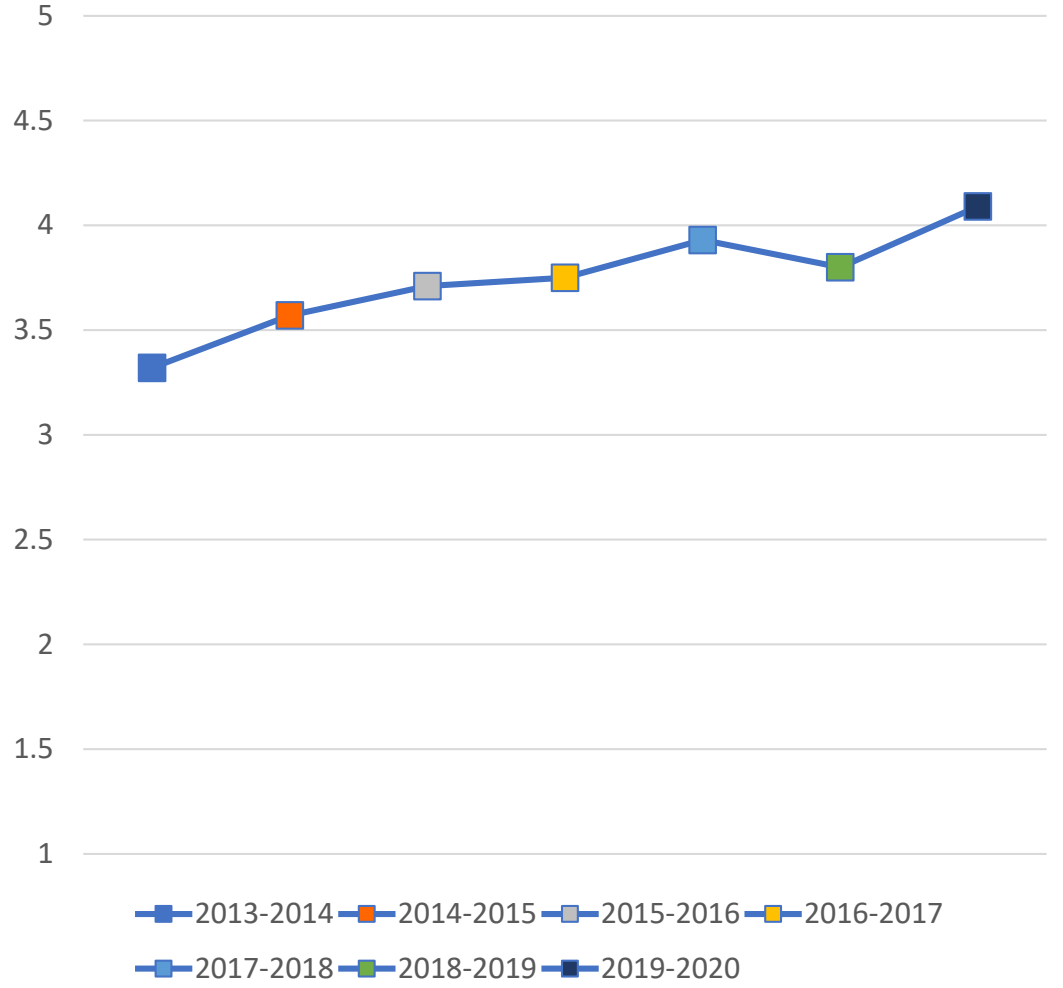
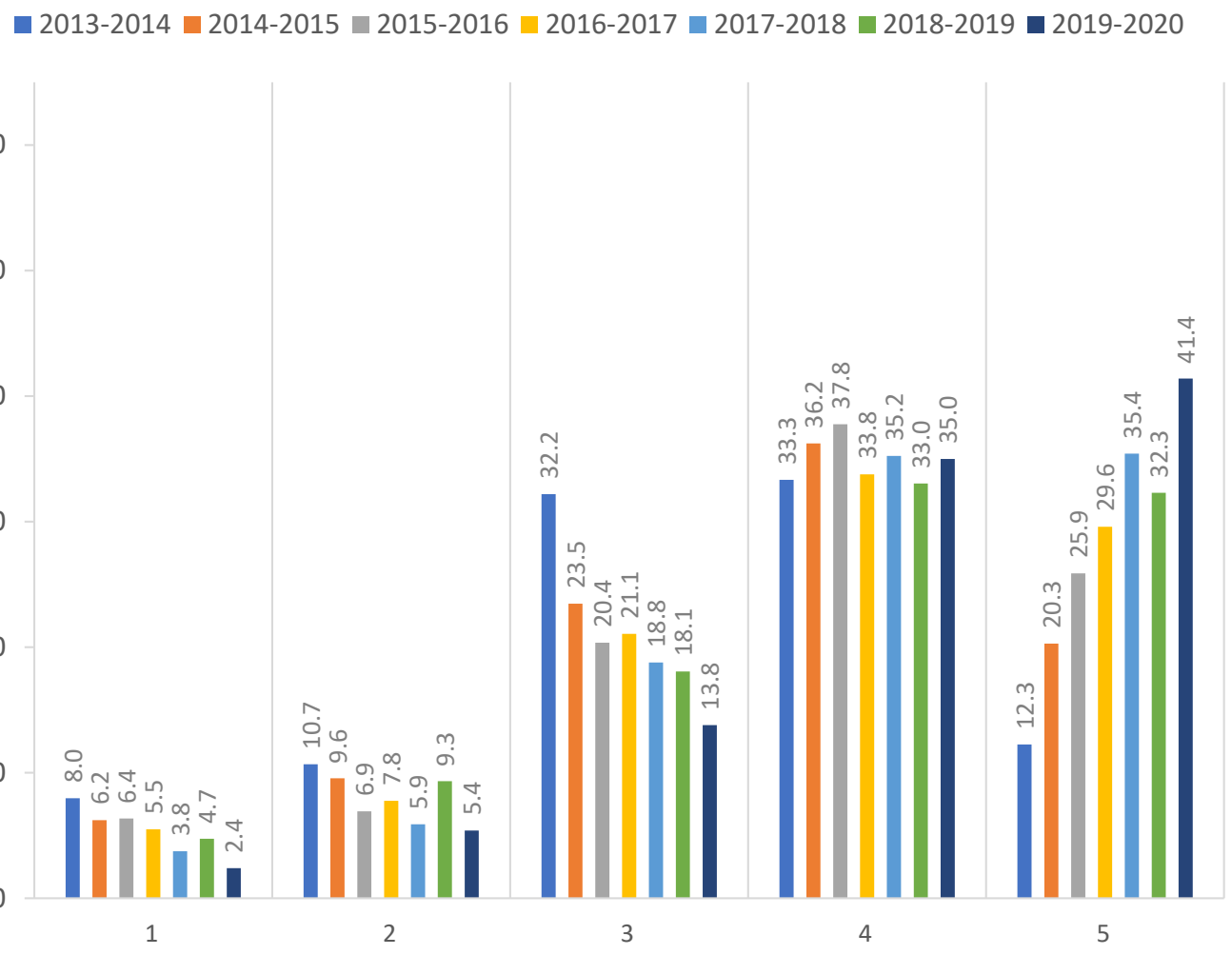
# During the 2019-20 Academic Year, the President Has Been Effective in... ...Fostering confidence in the future of UK

■ 2013-2014 ■ 2014-2015 ■ 2015-2016 ■ 2016-2017 ■ 2017-2018 ■ 2018-2019 ■ 2019-2020



# During the 2019-20 Academic Year, the President Has Been Effective in...

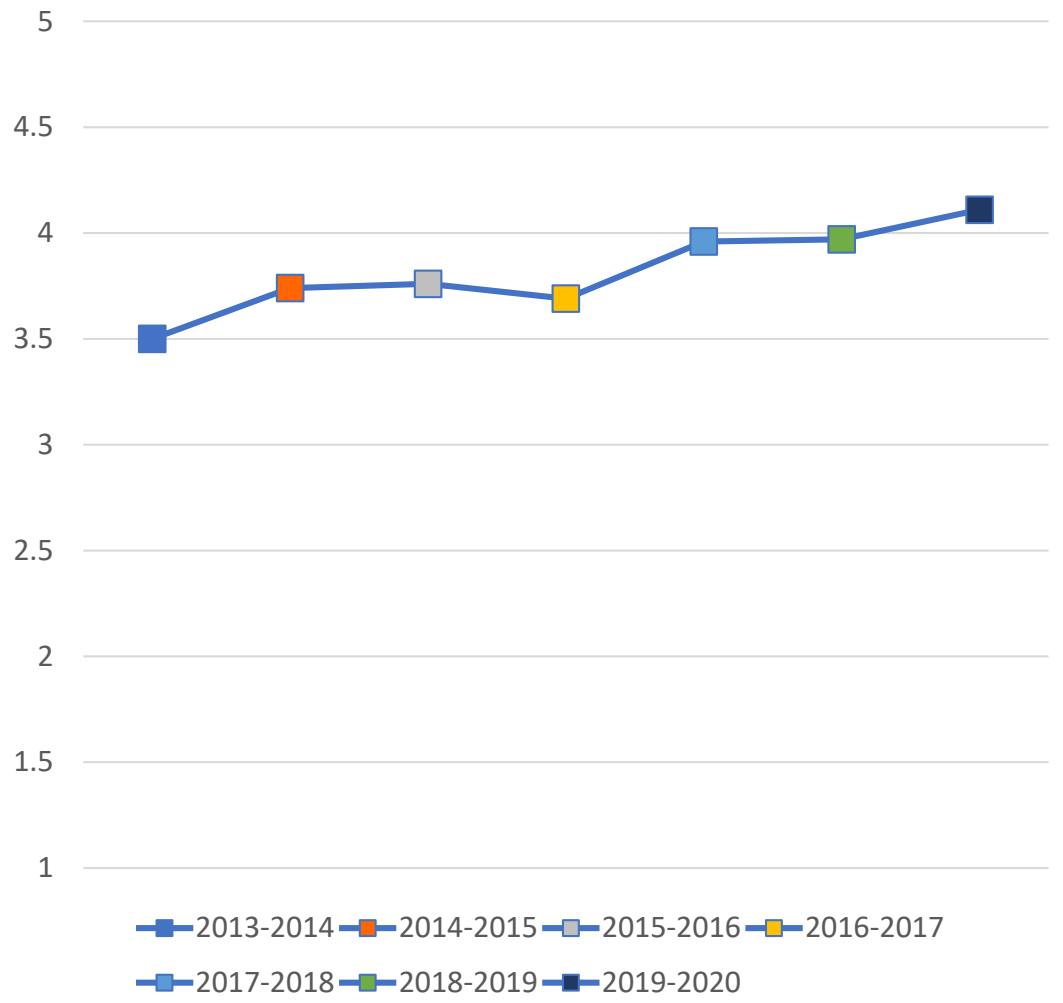
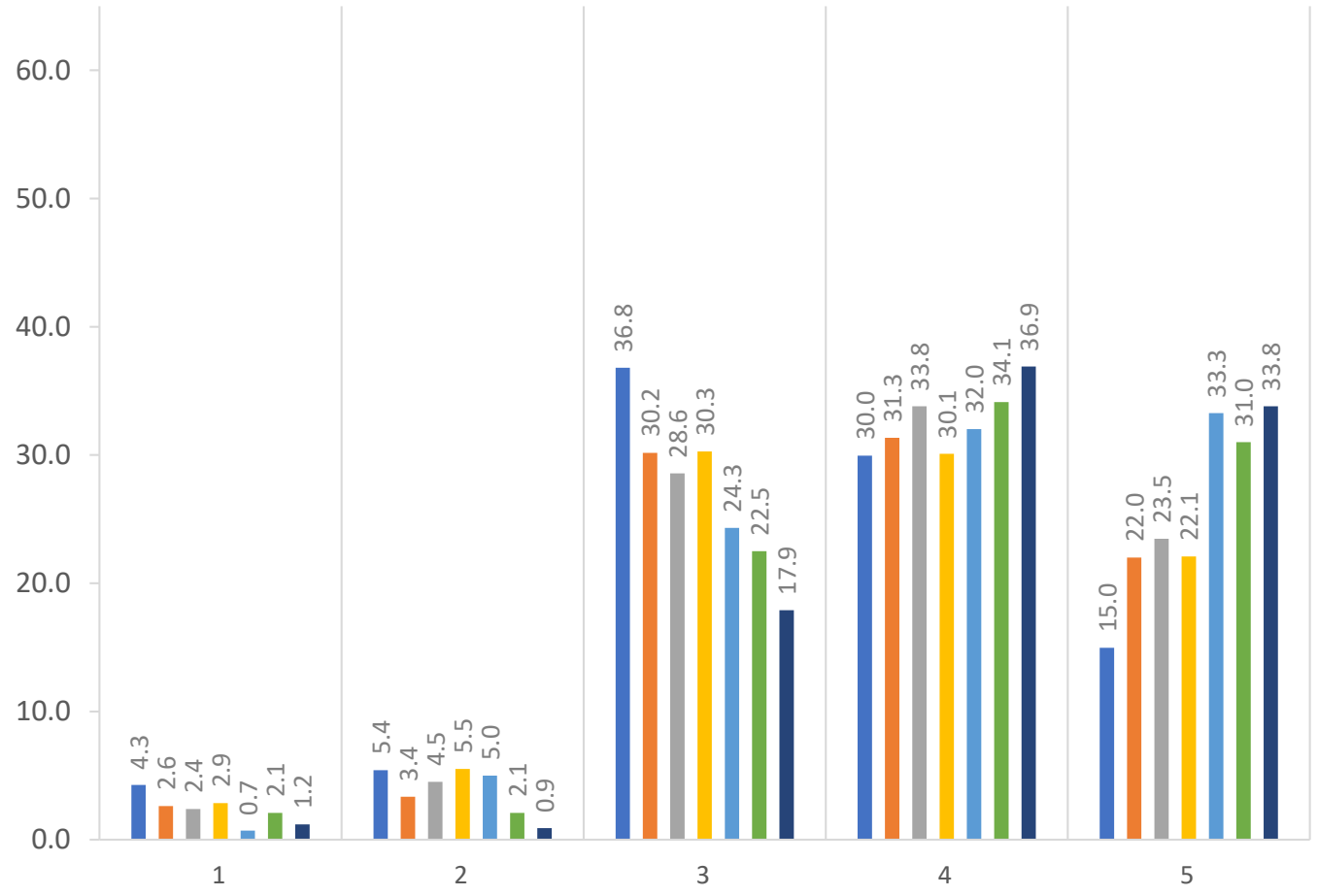
...Fostering a campus environment that is diverse and inclusive



# During the 2019-20 Academic Year, the President Has Been Effective in...

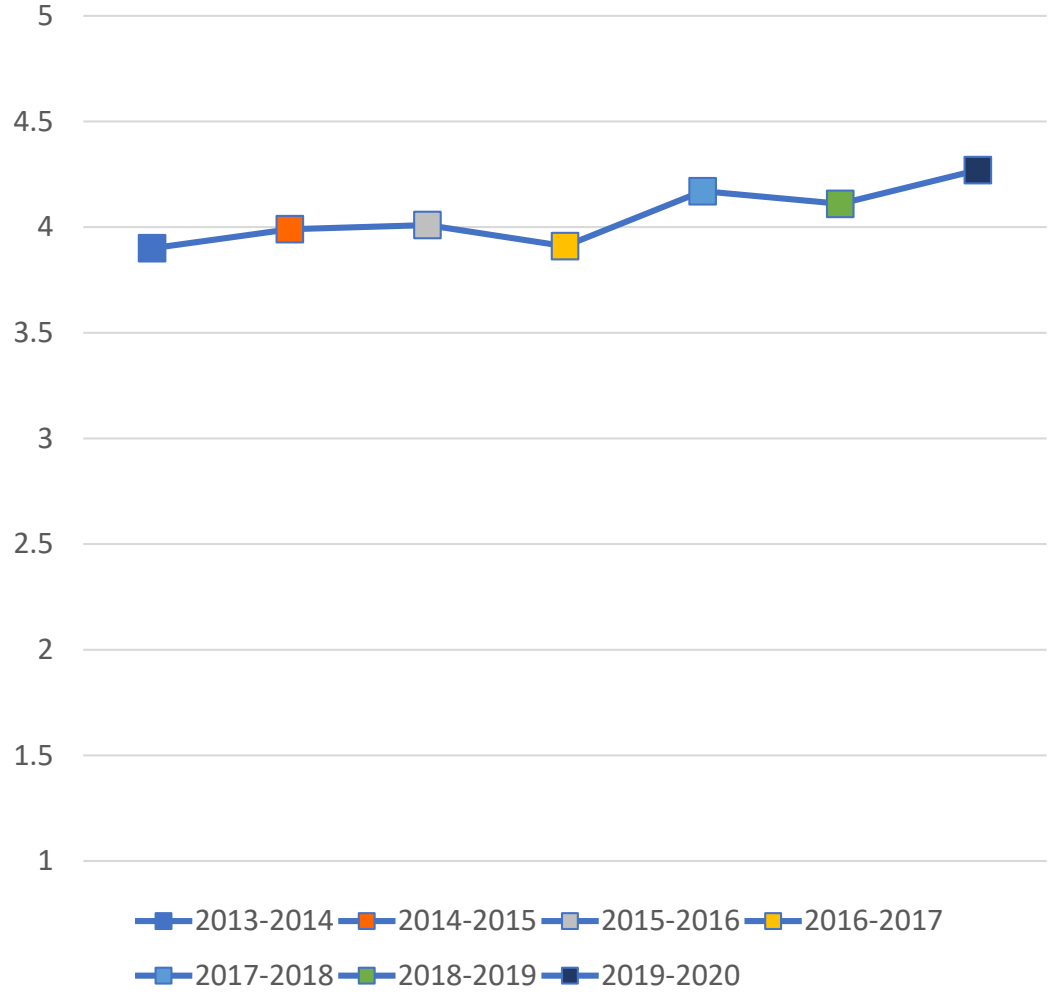
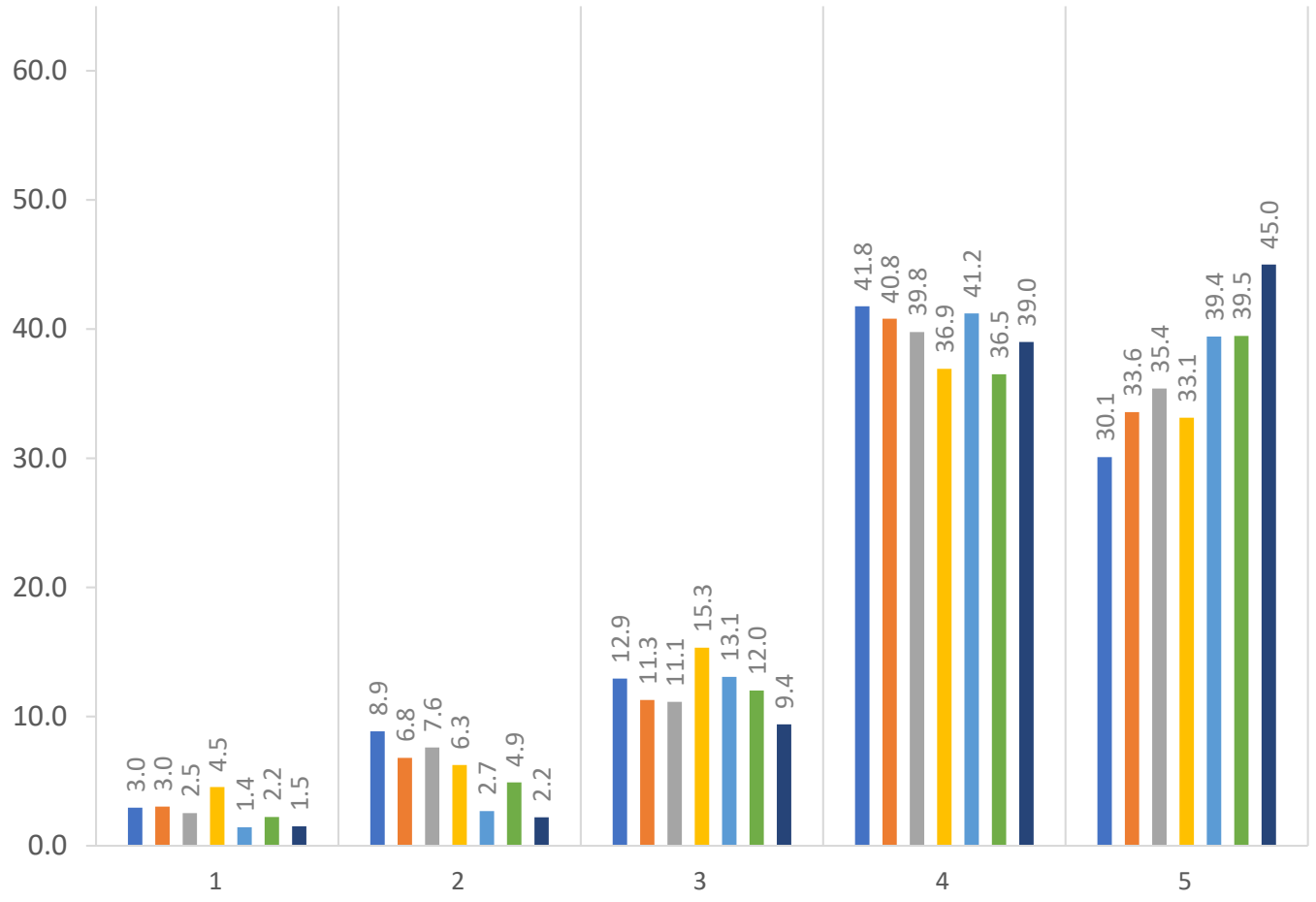
...Maintaining productive relationships with external constituencies

■ 2013-2014 ■ 2014-2015 ■ 2015-2016 ■ 2016-2017 ■ 2017-2018 ■ 2018-2019 ■ 2019-2020



# During the 2019-20 Academic Year, the President Has Been Effective in... ...Supporting undergraduate education

■ 2013-2014 ■ 2014-2015 ■ 2015-2016 ■ 2016-2017 ■ 2017-2018 ■ 2018-2019 ■ 2019-2020

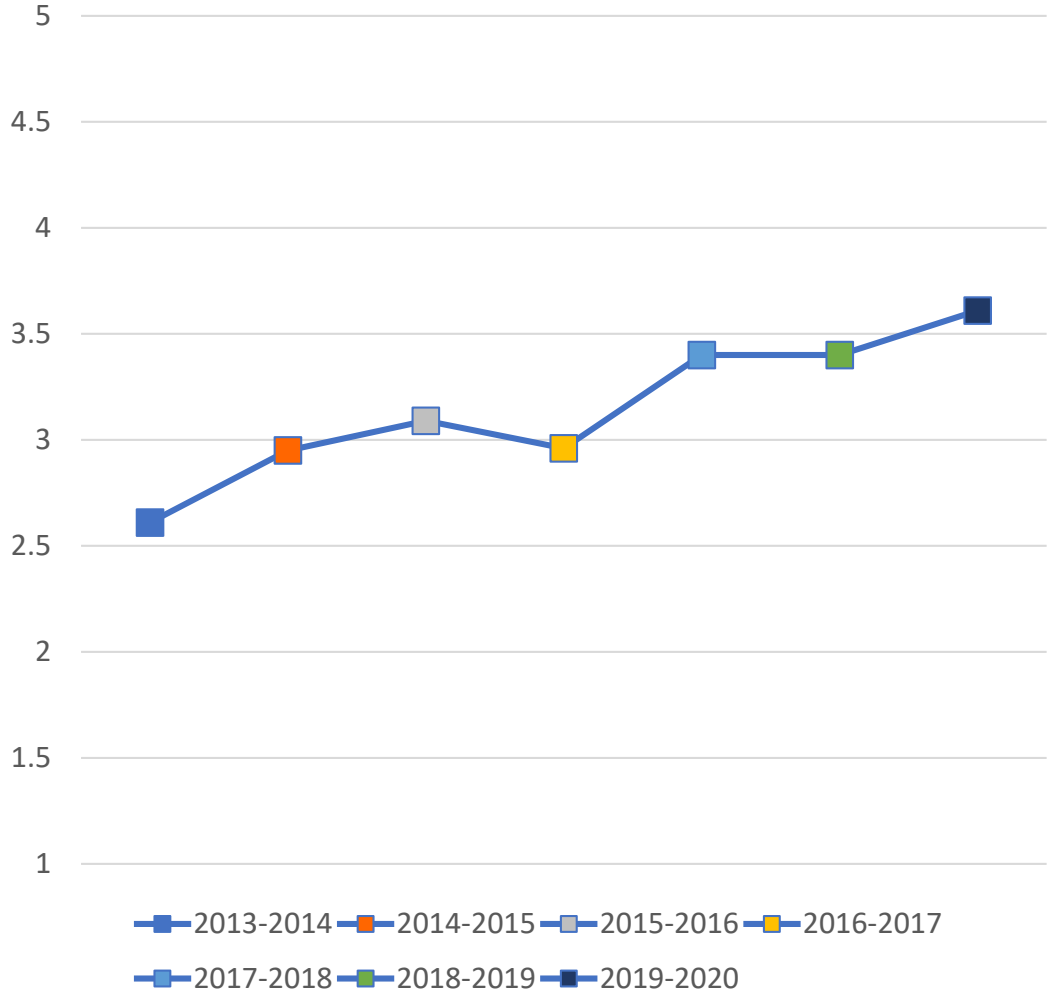
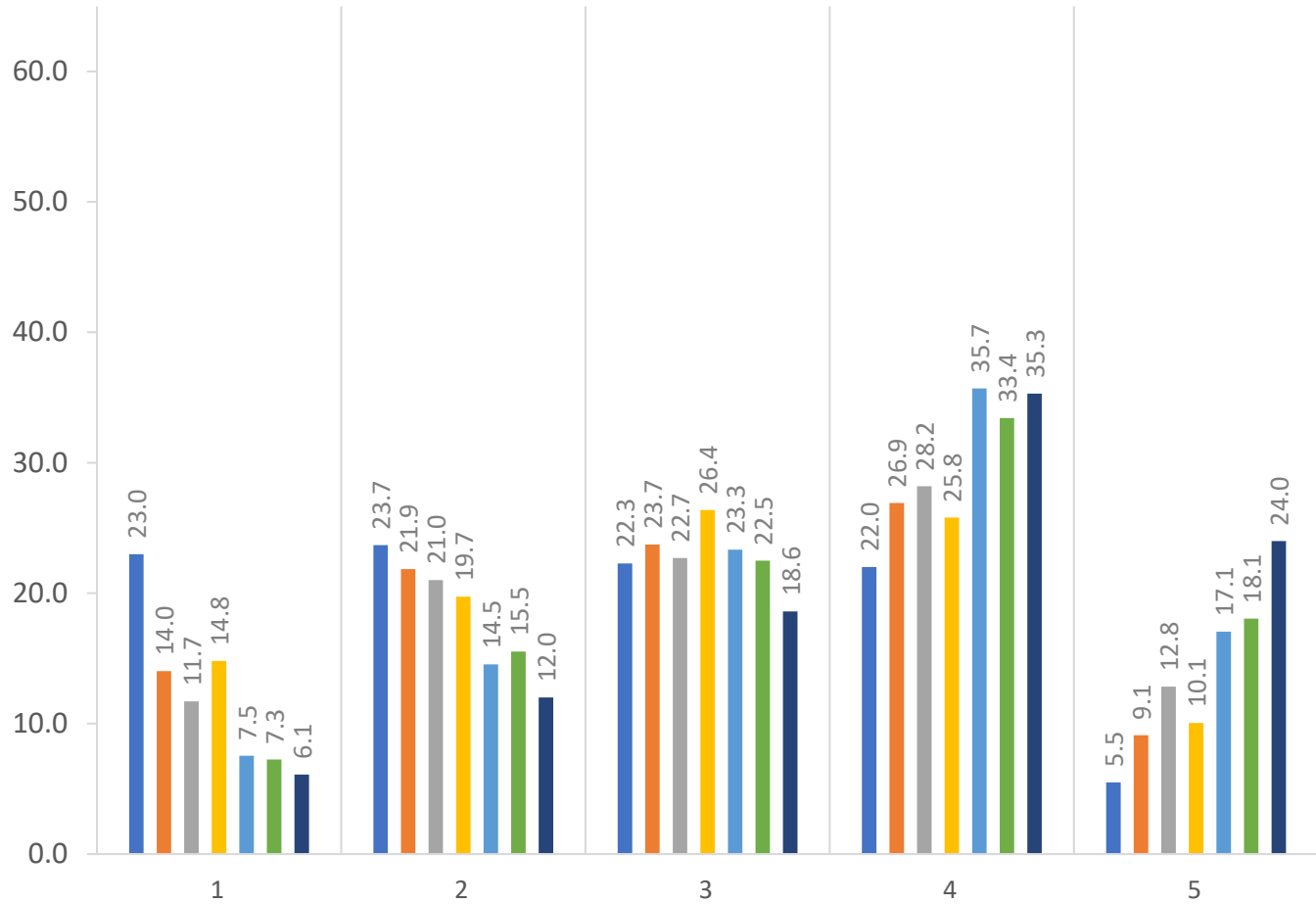




# During the 2019-20 Academic Year, the President Has Been Effective in...

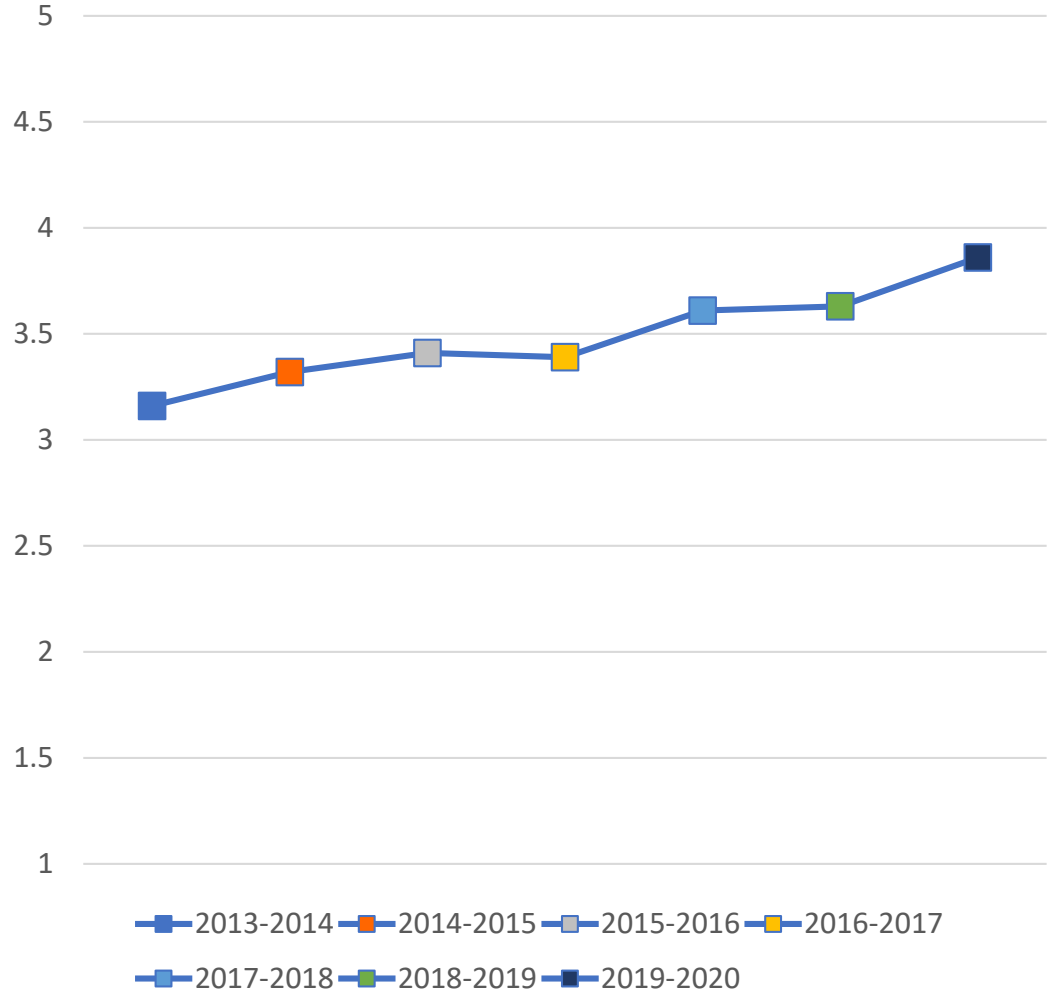
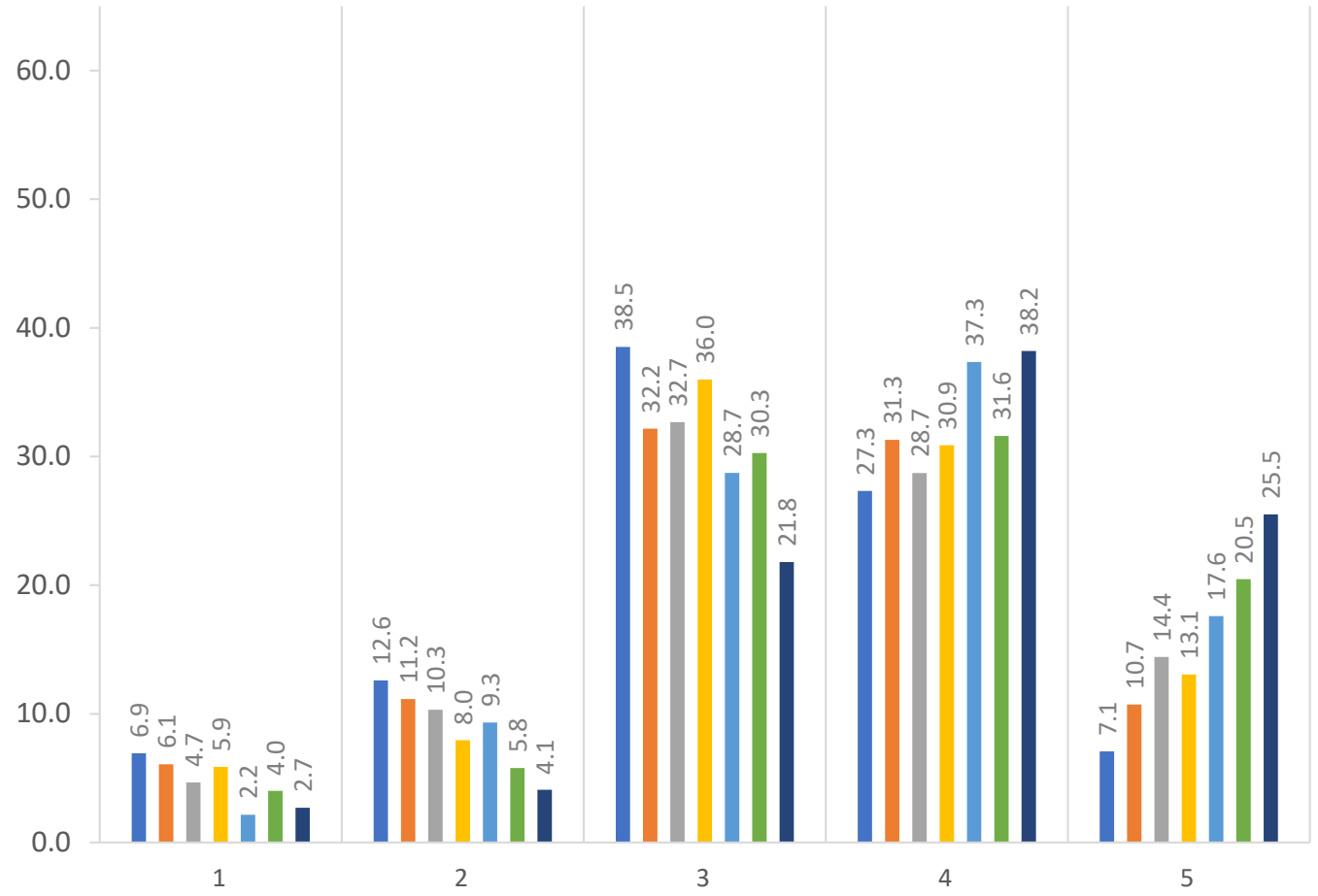
...Supporting graduate education

■ 2013-2014 ■ 2014-2015 ■ 2015-2016 ■ 2016-2017 ■ 2017-2018 ■ 2018-2019 ■ 2019-2020



# During the 2019-20 Academic Year, the President Has Been Effective in... ...Supporting professional education

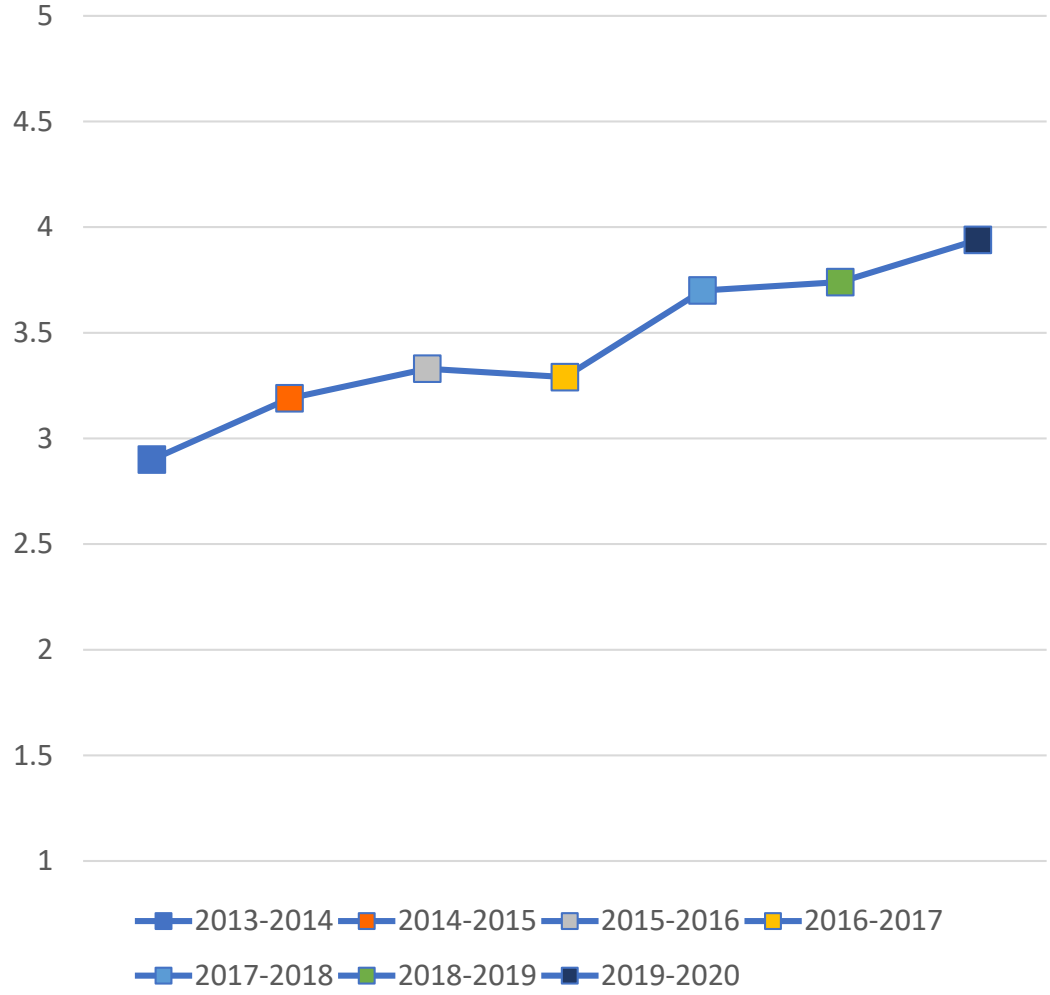
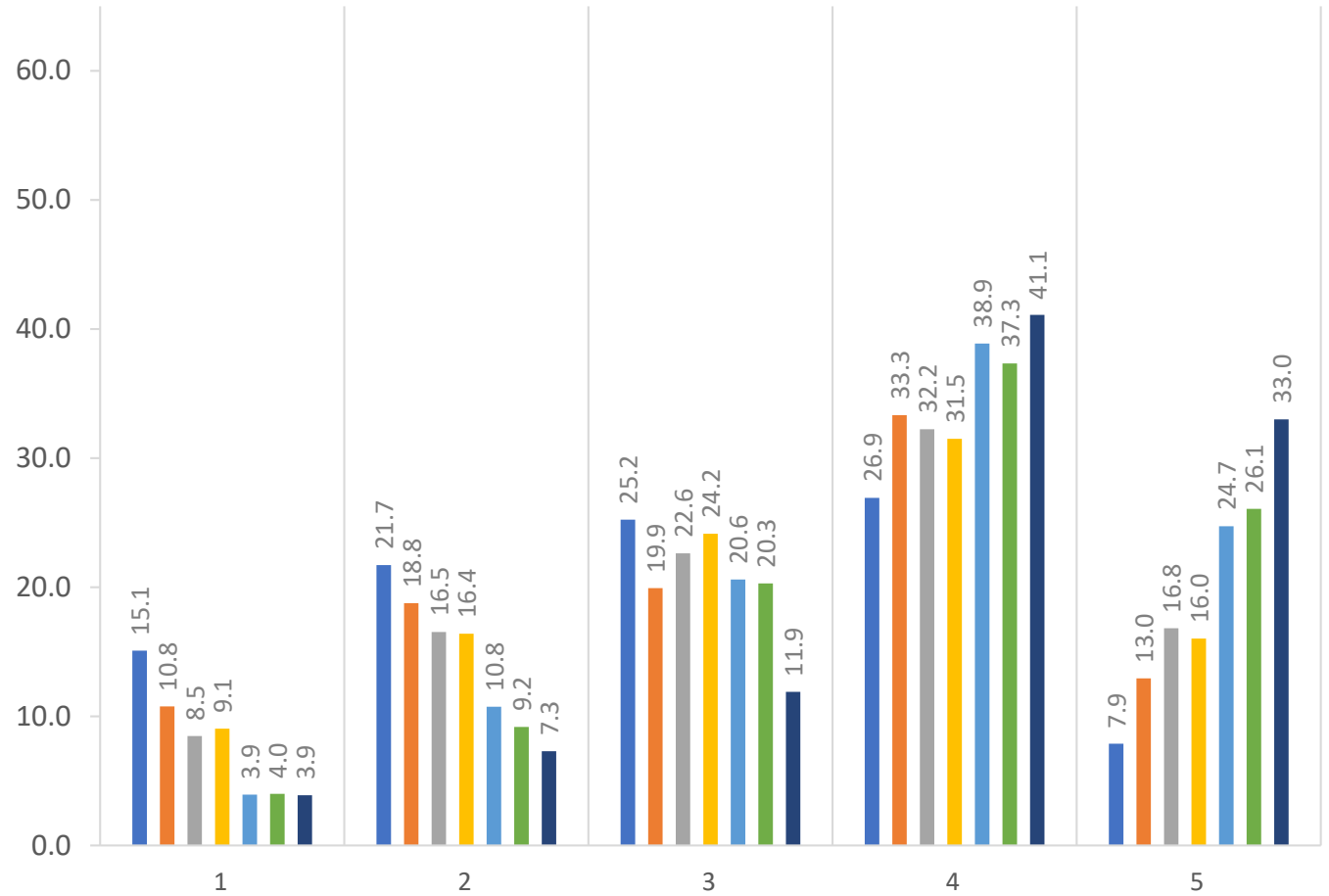
■ 2013-2014 ■ 2014-2015 ■ 2015-2016 ■ 2016-2017 ■ 2017-2018 ■ 2018-2019 ■ 2019-2020



# During the 2019-20 Academic Year, the President Has Been Effective in...

...Supporting the research mission

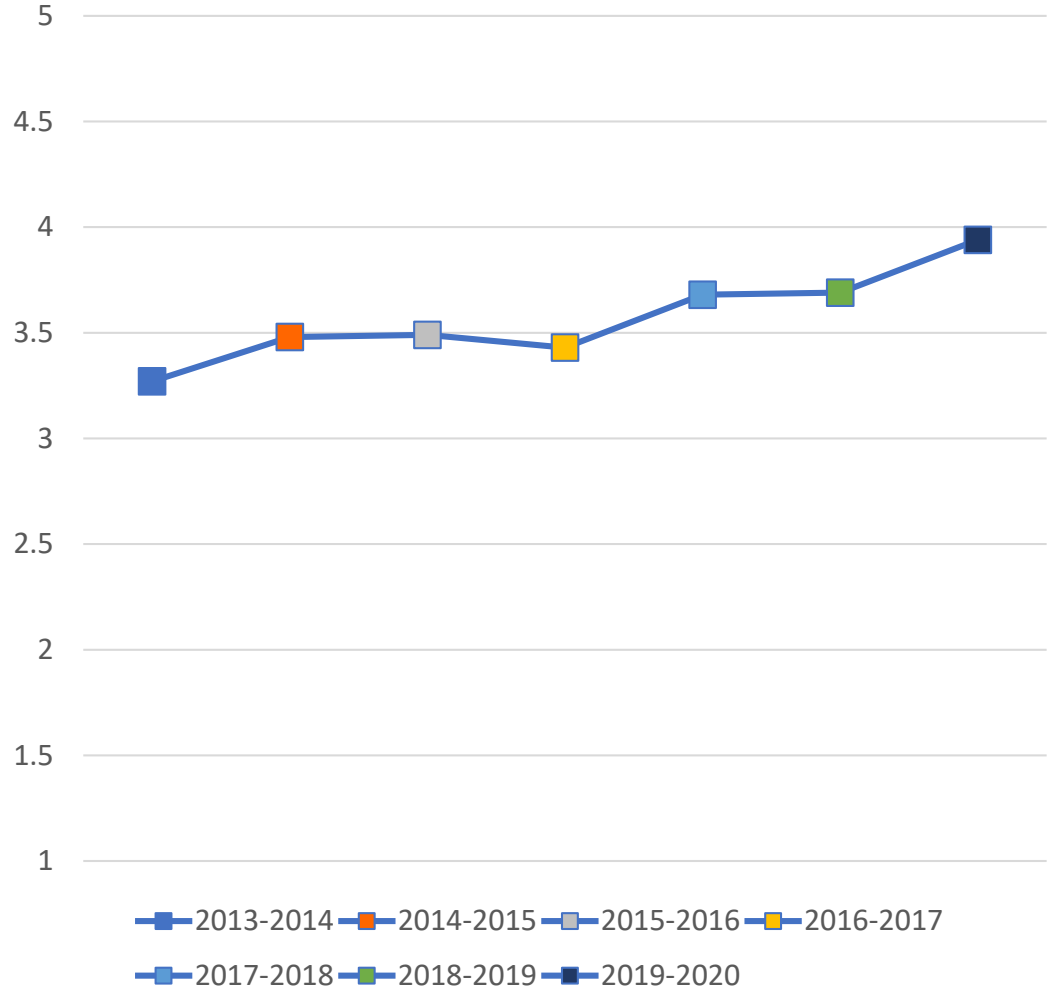
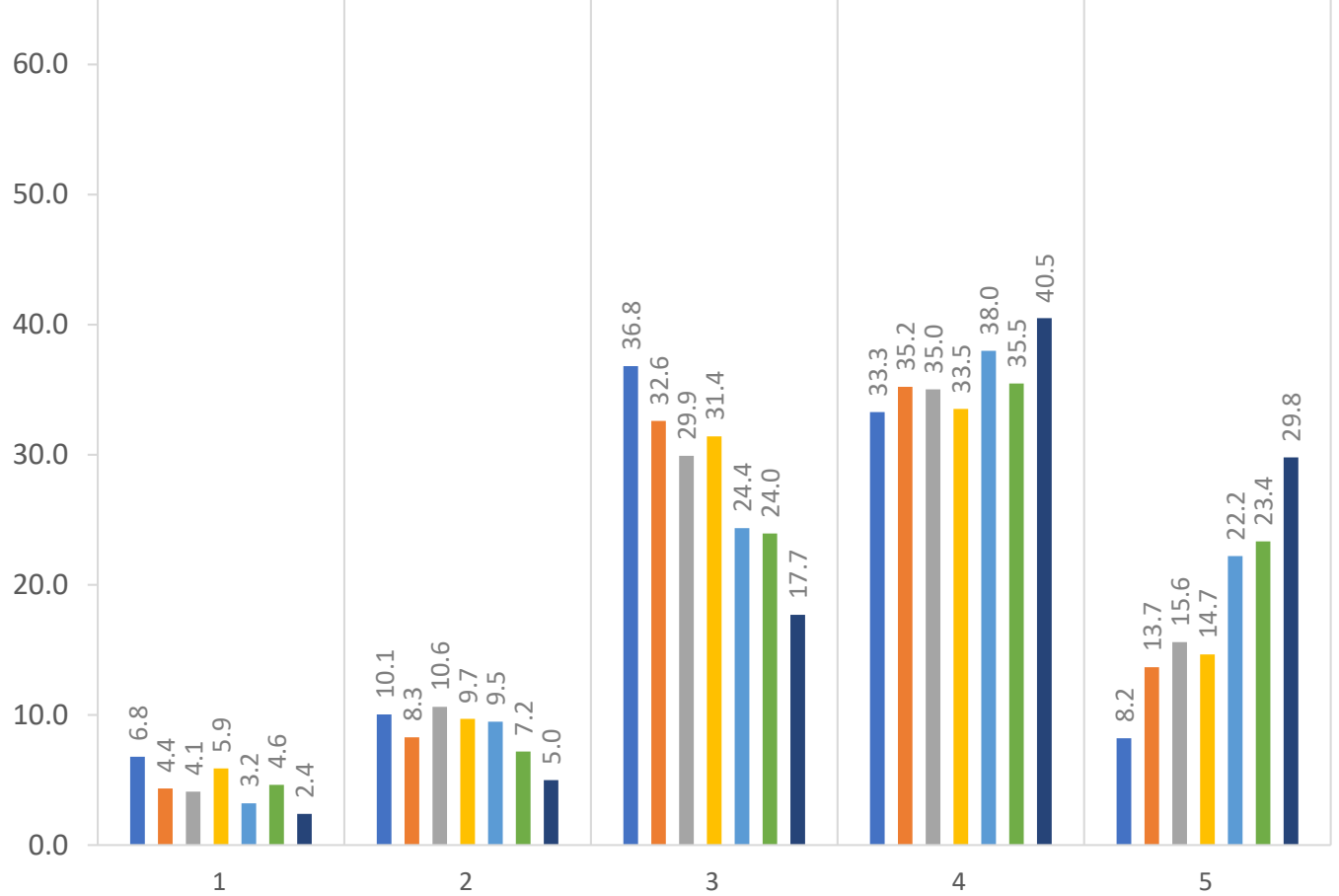
■ 2013-2014 ■ 2014-2015 ■ 2015-2016 ■ 2016-2017 ■ 2017-2018 ■ 2018-2019 ■ 2019-2020



# During the 2019-20 Academic Year, the President Has Been Effective in...

...Supporting the service mission

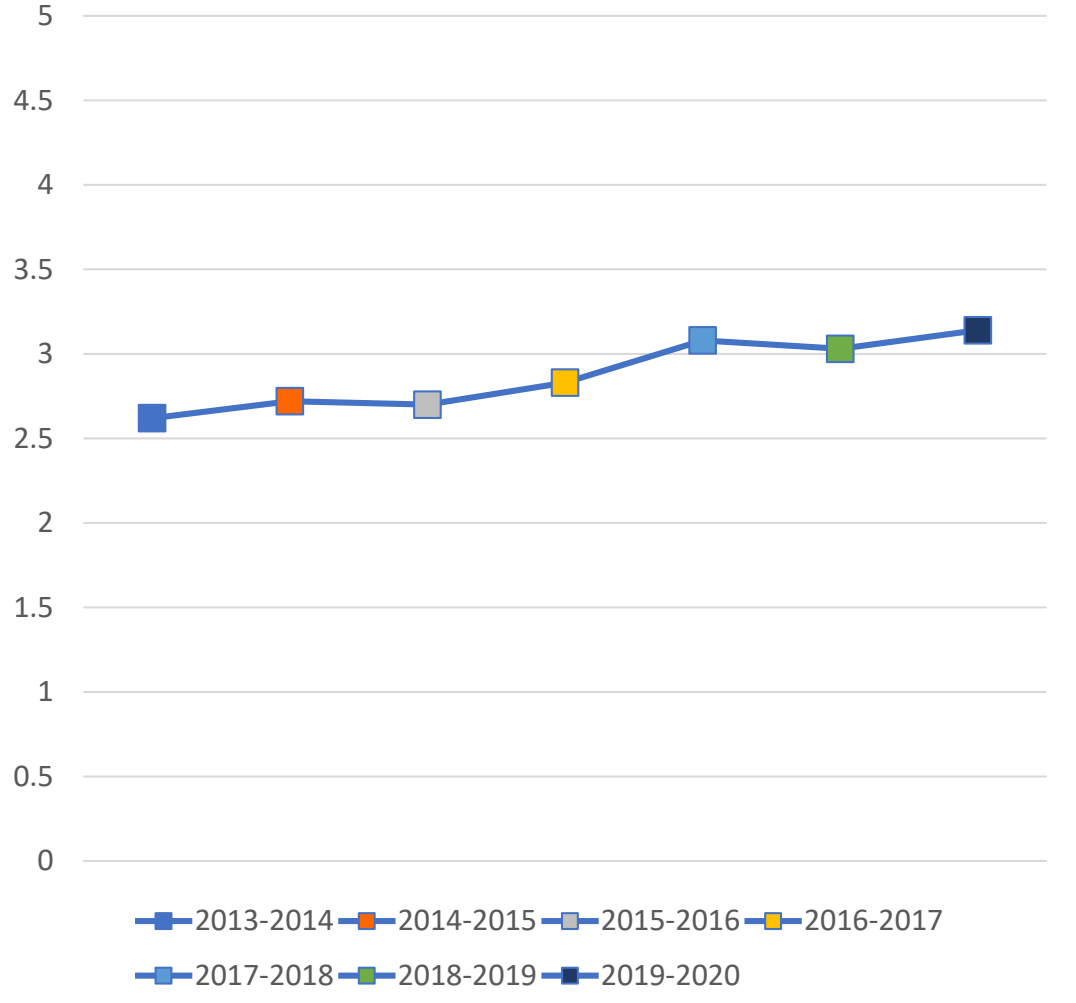
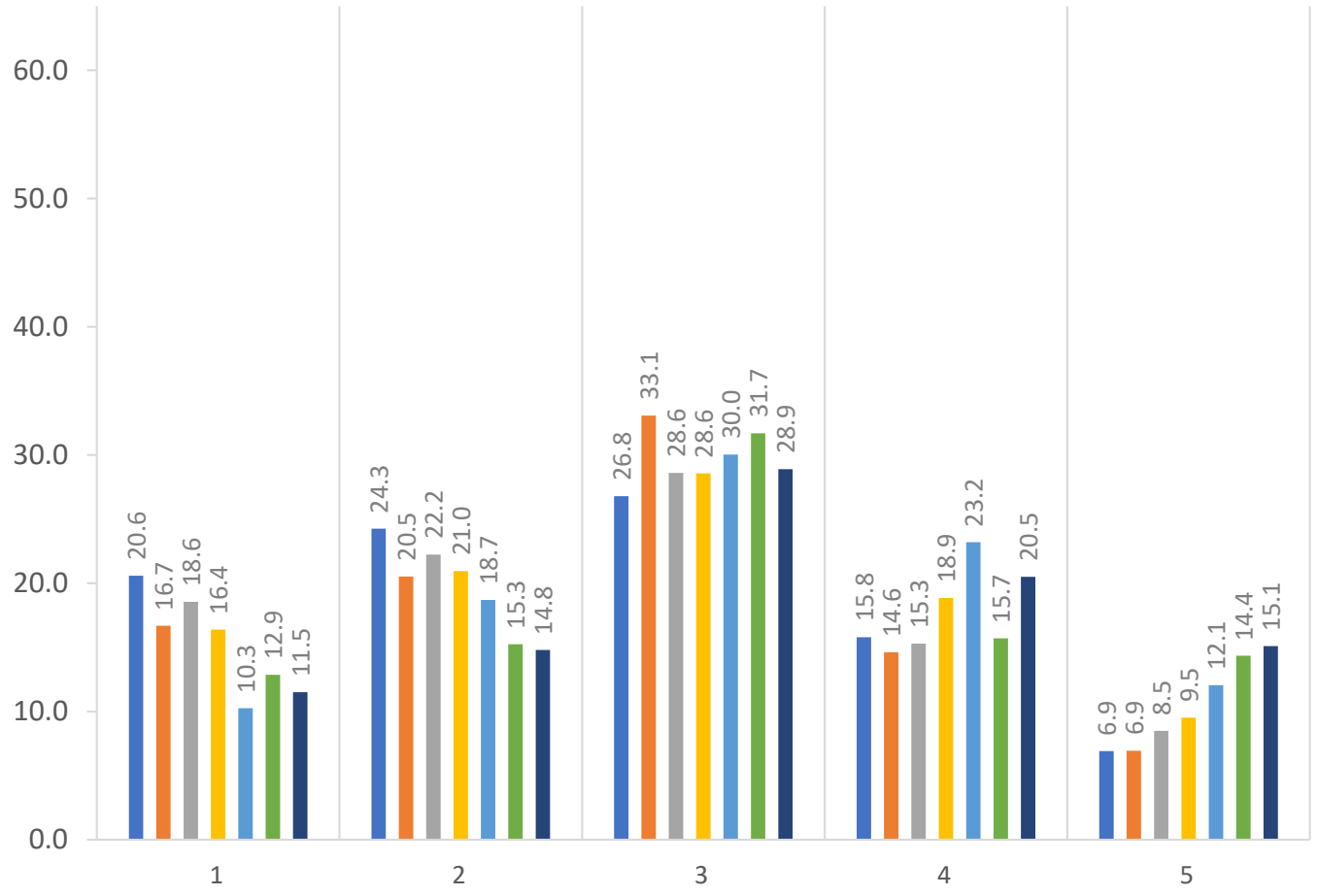
■ 2013-2014 ■ 2014-2015 ■ 2015-2016 ■ 2016-2017 ■ 2017-2018 ■ 2018-2019 ■ 2019-2020



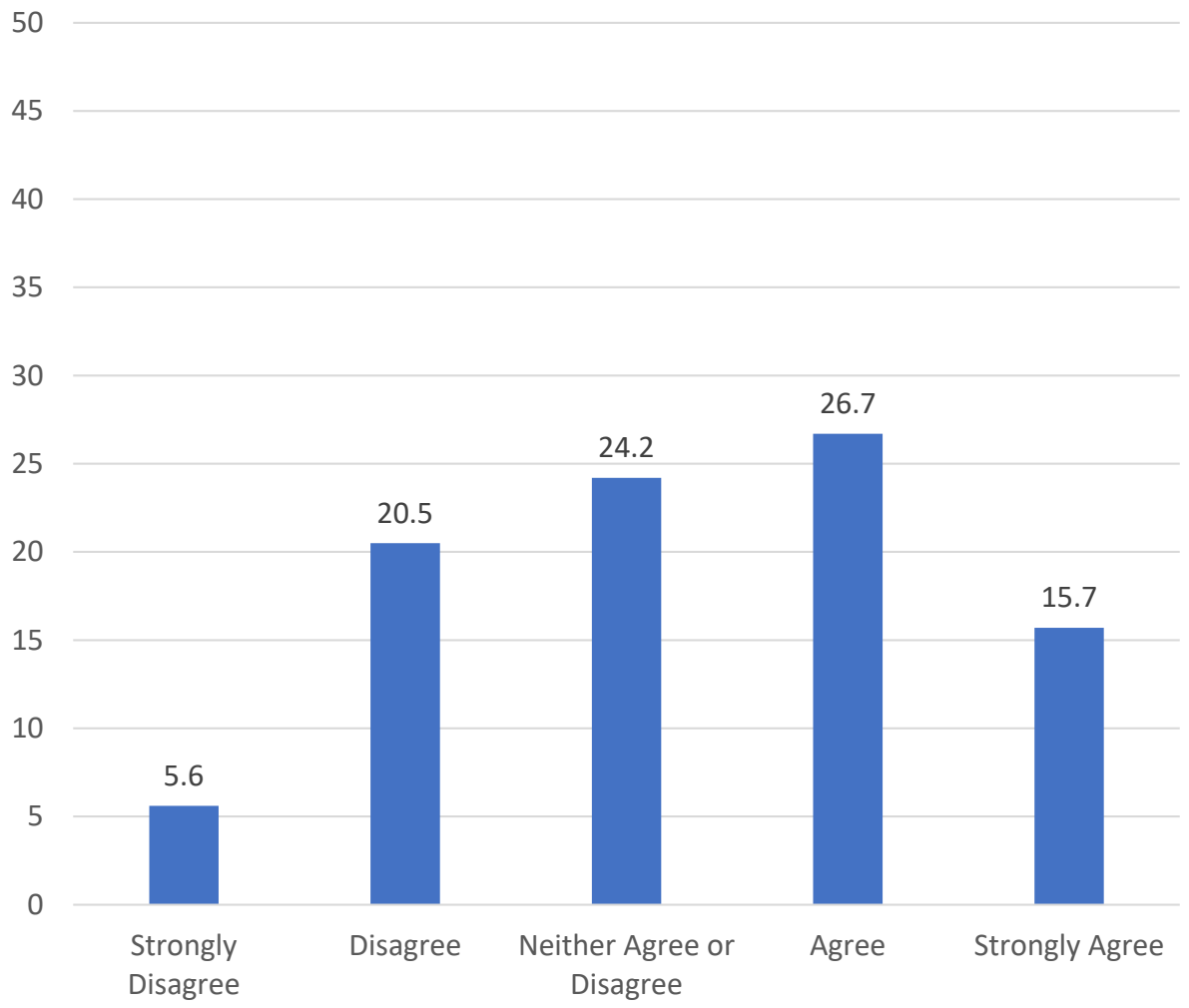
# During the 2019-20 Academic Year, the President Has Been Effective in...

...Restructuring the administration to be cost effective

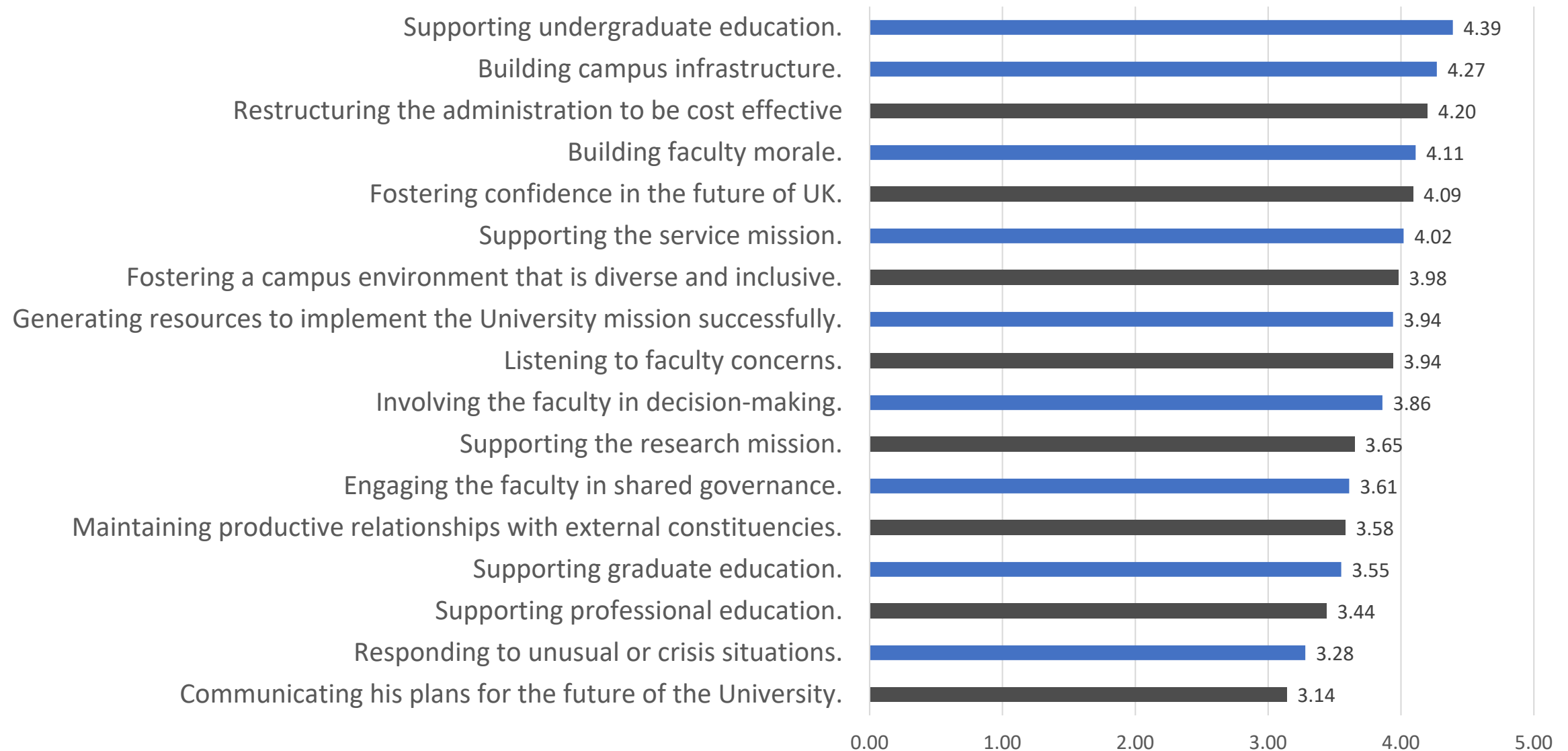
■ 2013-2014 ■ 2014-2015 ■ 2015-2016 ■ 2016-2017 ■ 2017-2018 ■ 2018-2019 ■ 2019-2020



### Responding to unusual or crisis situations.



## During the 2019-20 Academic Year, the President Has Been Effective in...



## President Survey

**Thank you for reviewing this information.**

**Questions?**

