



# ANNUAL EVALUATION OF THE PRESIDENT

Senate Council's Survey of Full-Time  
Faculty for Academic Year 2018-19





# ANNUAL EVALUATION OF THE PRESIDENT

Senate Council's Survey of Full-Time  
Faculty for Academic Year 2018-19



## Background

The Senate Council assisted in the annual evaluation of President Capilouto by surveying all full-time faculty during a four-week period, from April 11, 2019 to May 1, 2019.

There were 684 responses for a response rate of 23%.

The results are summarized and compared with the results from the 2013-14, 2014-15, 2015-16, 2016-17, 2017-18, and 2018-19 surveys in the slides that follow.



## Response Rate by College

COLLEGE	TOTAL FACULTY	RESPONSE RATE (%)	COLLEGE	TOTAL FACULTY	RESPONSE RATE (%)
Agriculture, Food & Environment	271	24.3	Honors College	10	30.0
Arts & Sciences	470	25.5	Health Sciences	72	34.7
Business & Economics (Gatton)	105	31.4	Law	34	32.3
Communication & Information	82	20.7	Library	53	18.8
Dentistry	66	28.7	Medicine	1116	19.2
Design	37	51.3	Nursing	66	25.7
Education	122	27.8	Pharmacy	61	22.9
Engineering	162	22.2	Public Health	55	30.9
Fine Arts	100	29.0	Social Work	36	25.0
Graduate School	14	14.2			



## President Survey About the Results – Response Scale

Respondents ranked the President on a 6-point Likert scale

0 = Choose not to respond

1 = Strongly disagree

2 = Disagree

3 = Neither agree nor disagree

4 = Agree

5 = Strongly agree

For the following slides, responses can be read by moving from left to right

On the far left are responses of "0" ("Choose not to respond")

On the far right are responses of "5" ("Strongly agree")



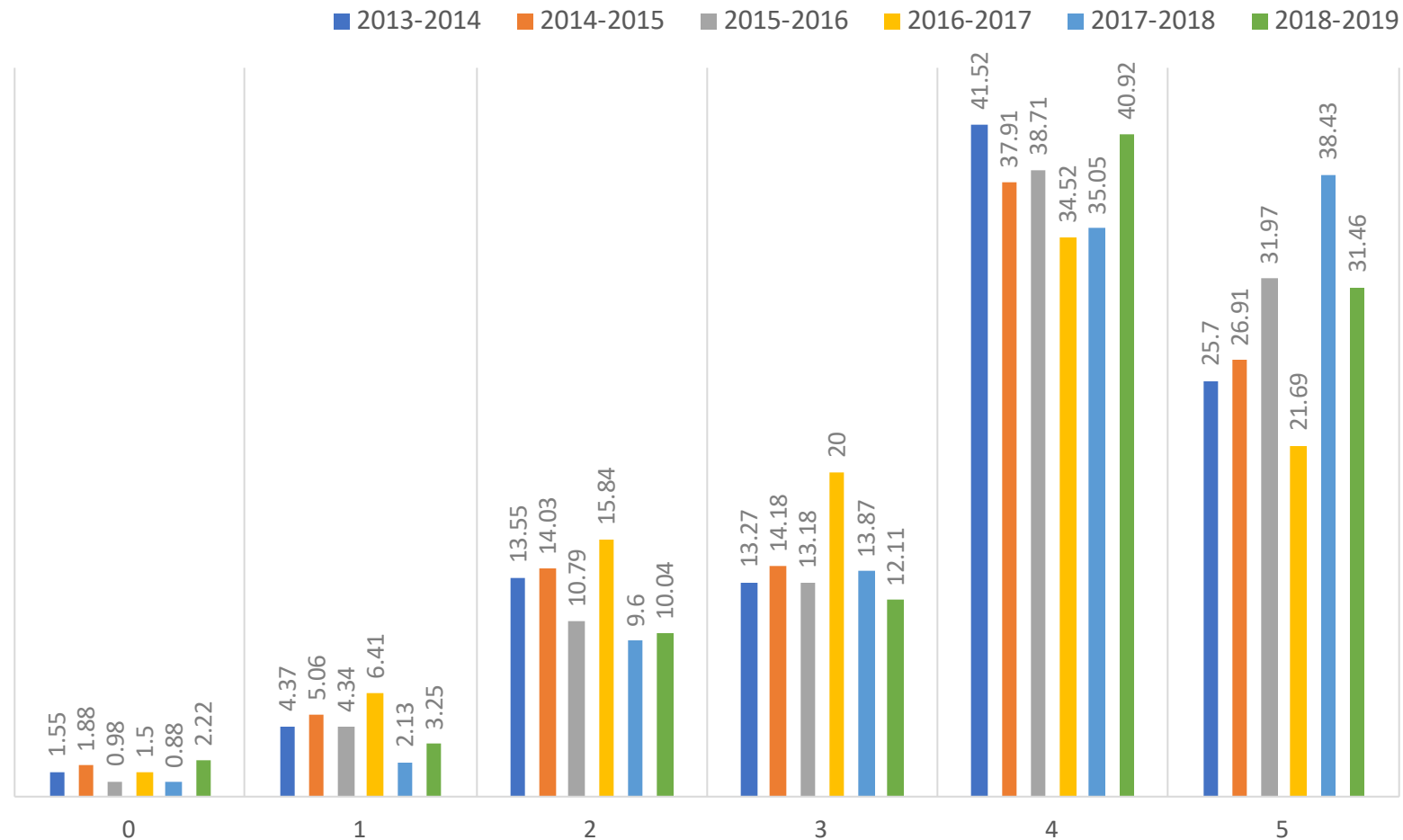
# President Survey About the Results – Colors

Colors indicate the year of the survey.

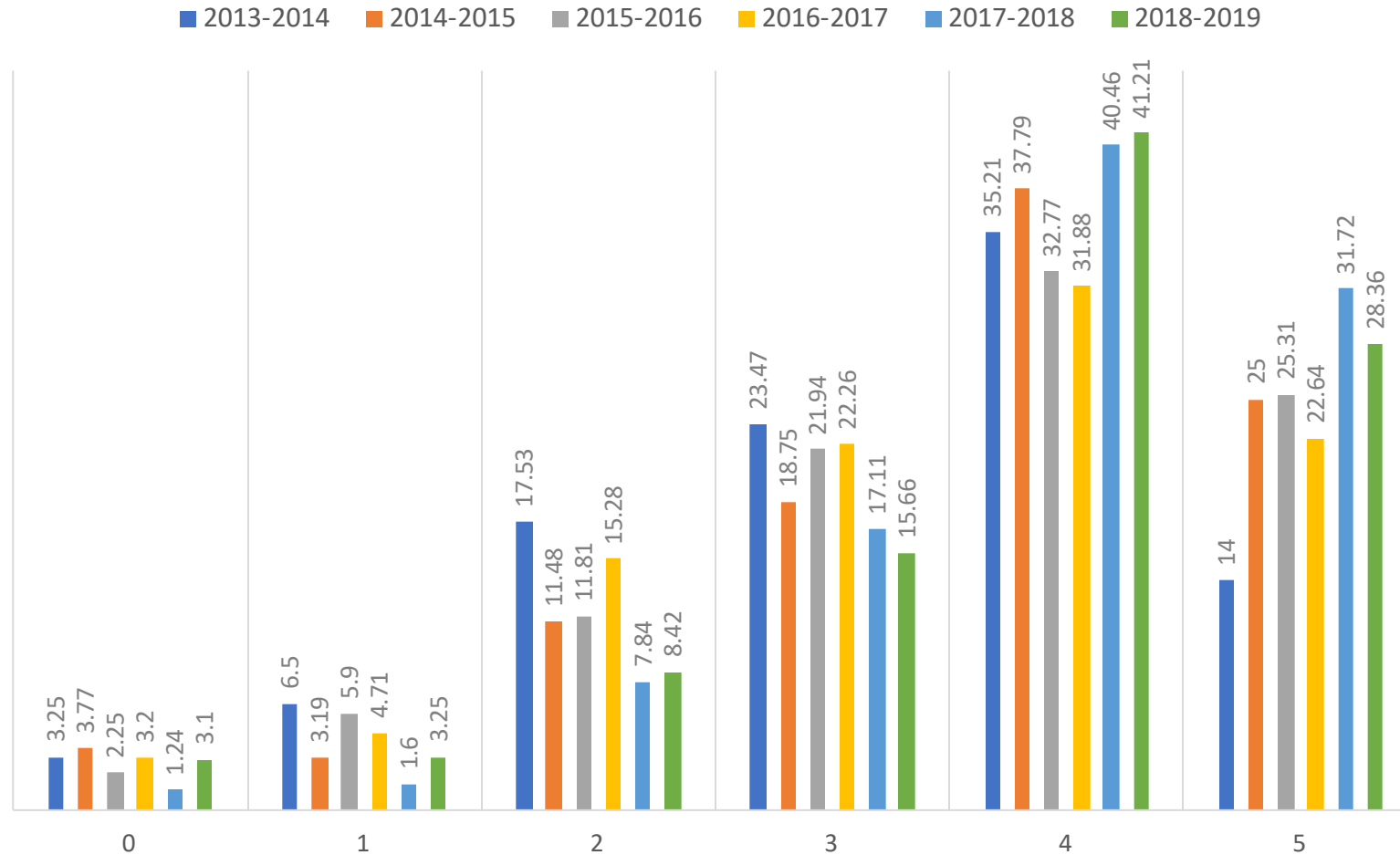
■ 2013-2014   ■ 2014-2015   ■ 2015-2016   ■ 2016-2017   ■ 2017-2018   ■ 2018-2019



## During the 2018-19 Academic Year, the President Has Been Effective in... ...Communicating his plans for the future of the University

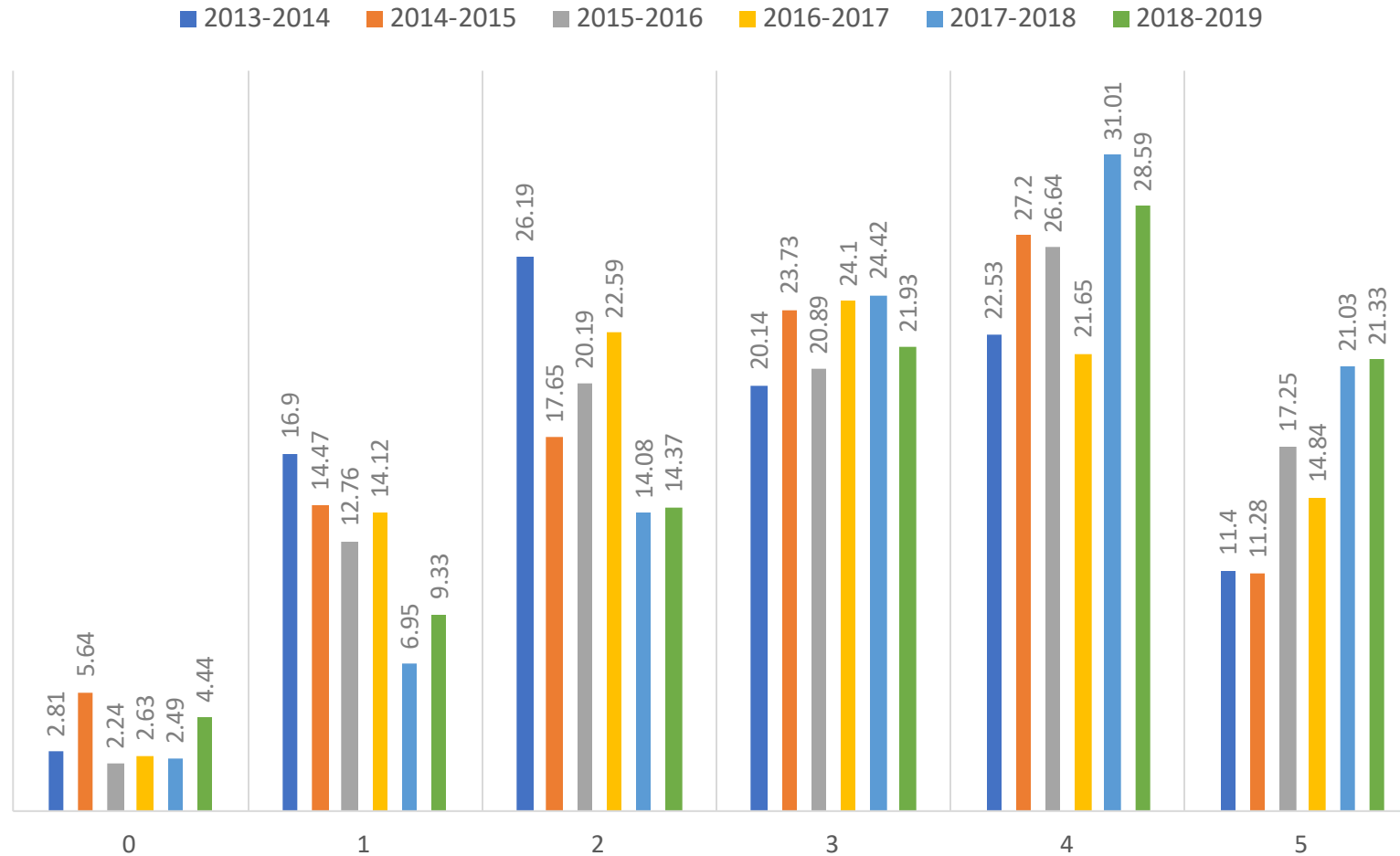


## During the 2018-19 Academic Year, the President Has Been Effective in... ...Generating resources to implement the University mission successfully

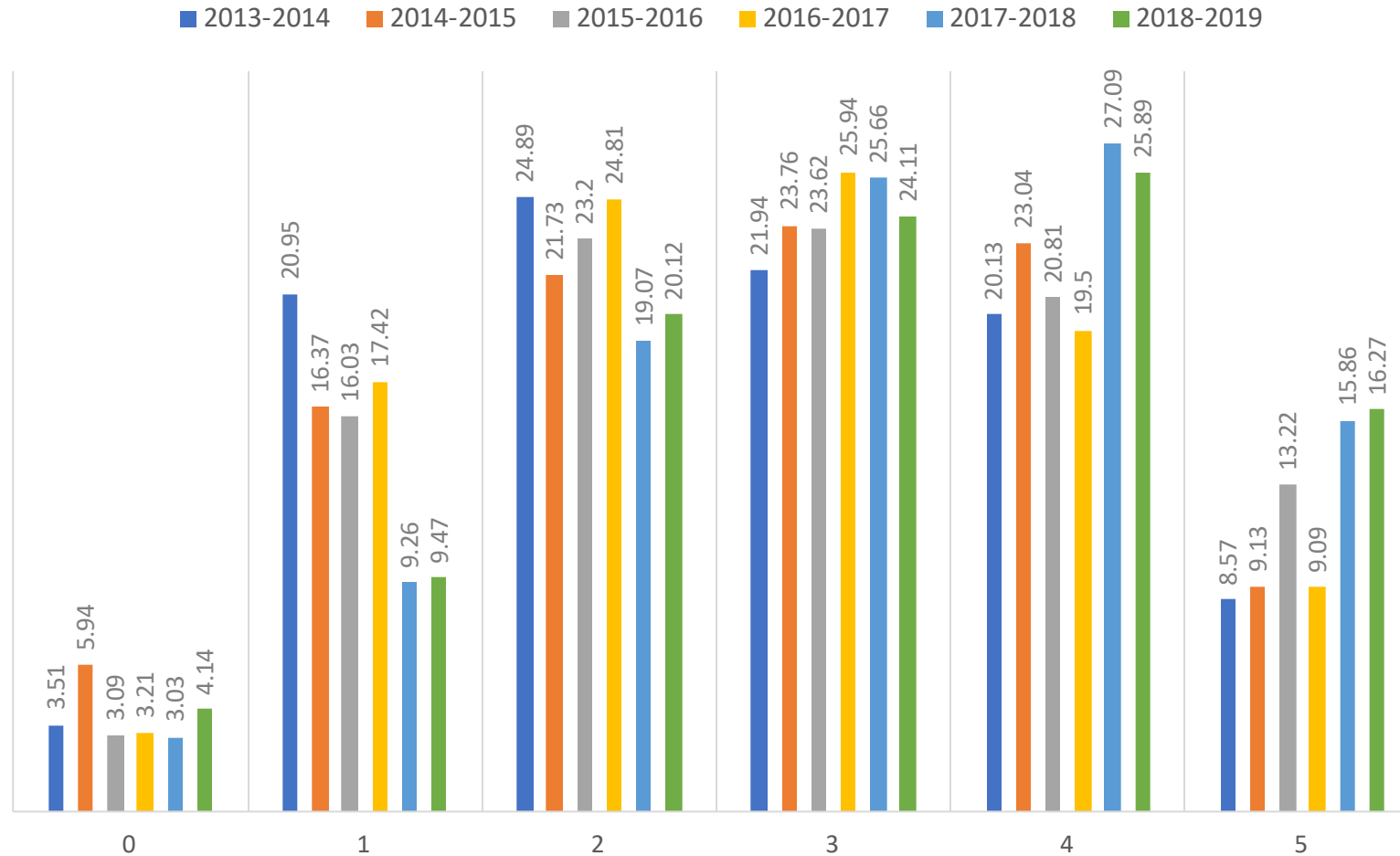




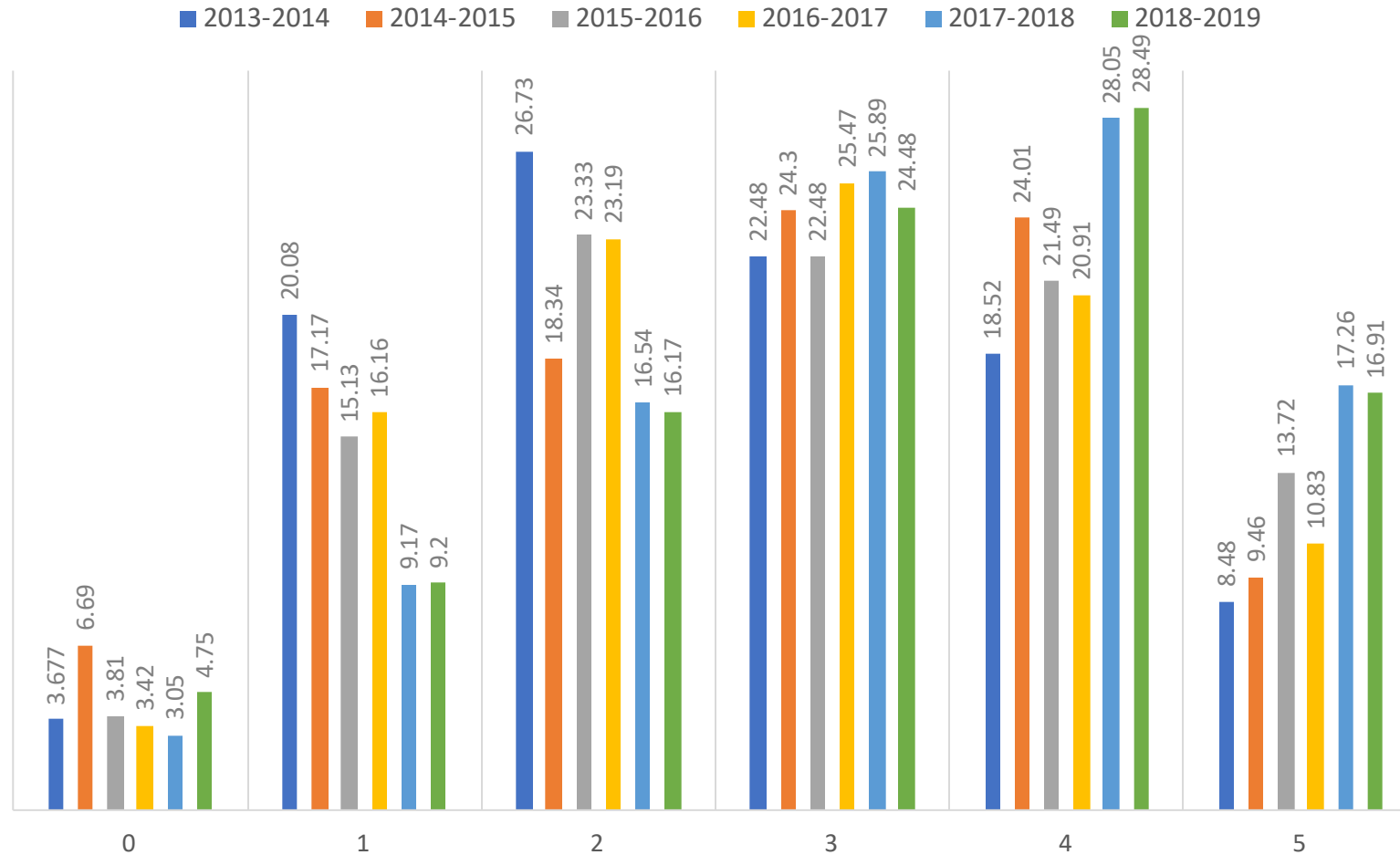
## During the 2018-19 Academic Year, the President Has Been Effective in... ...Listening to faculty concerns



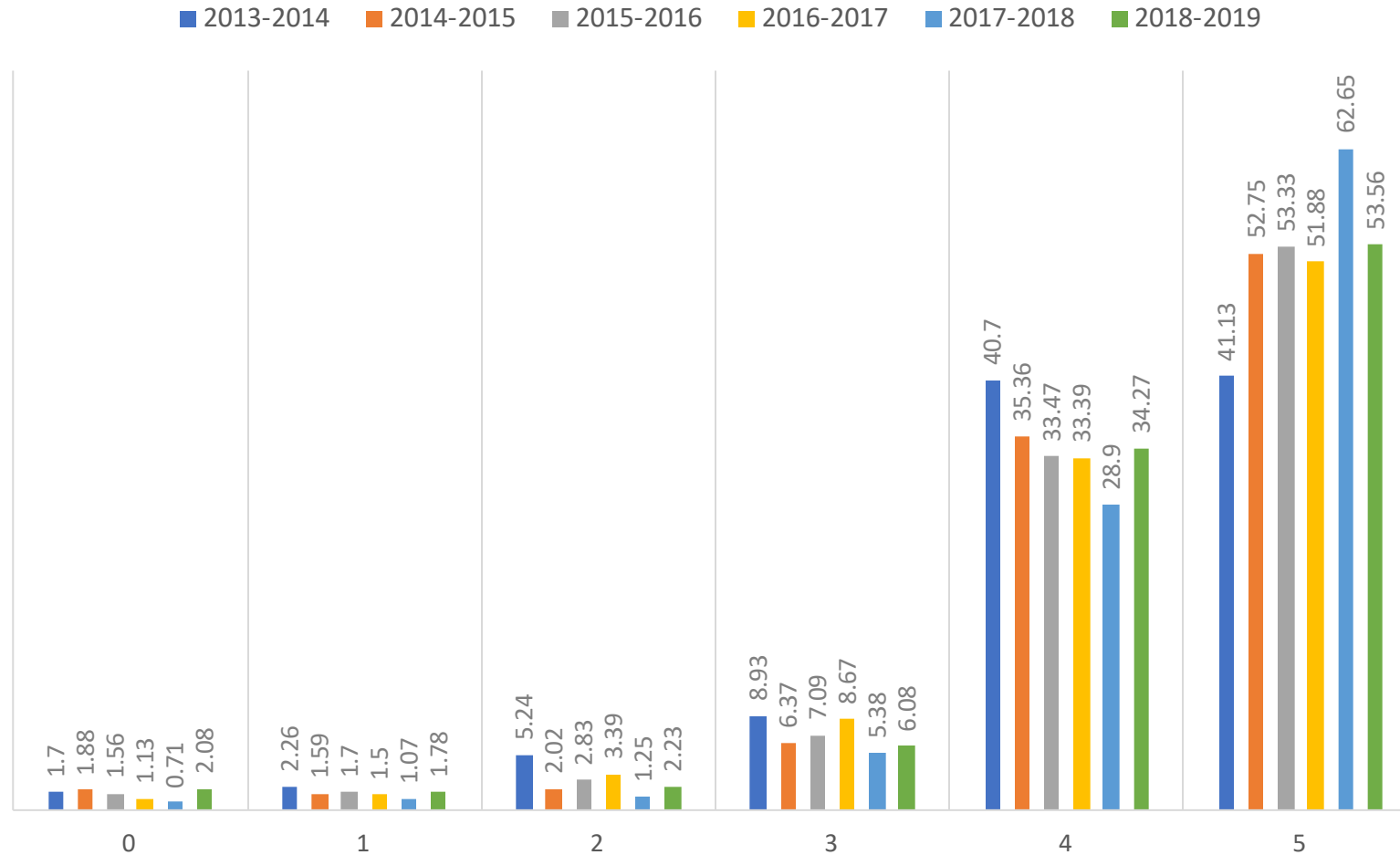
## During the 2018-19 Academic Year, the President Has Been Effective in... ...Involving the faculty in decision-making



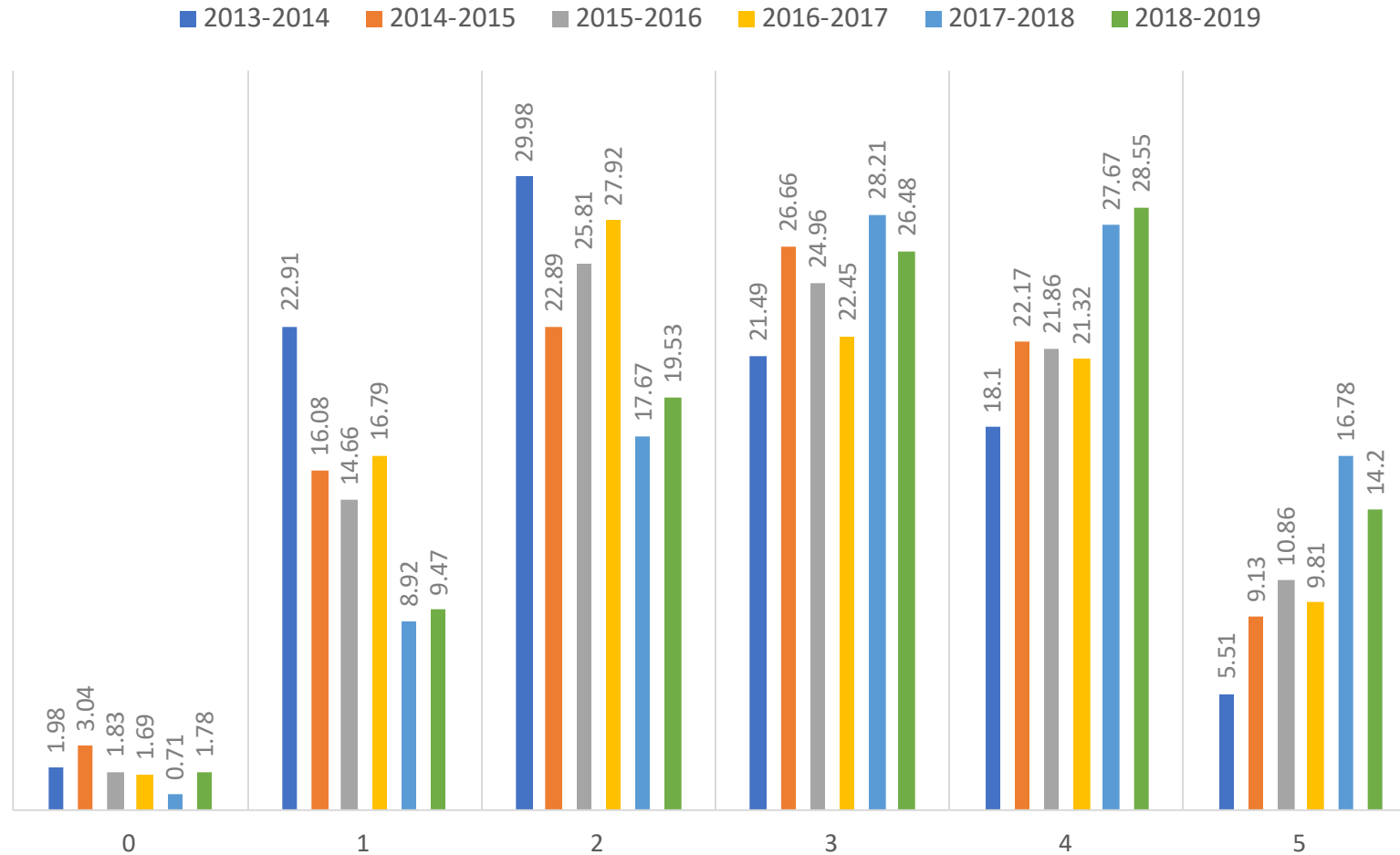
## During the 2018-19 Academic Year, the President Has Been Effective in... Engaging the faculty in shared governance



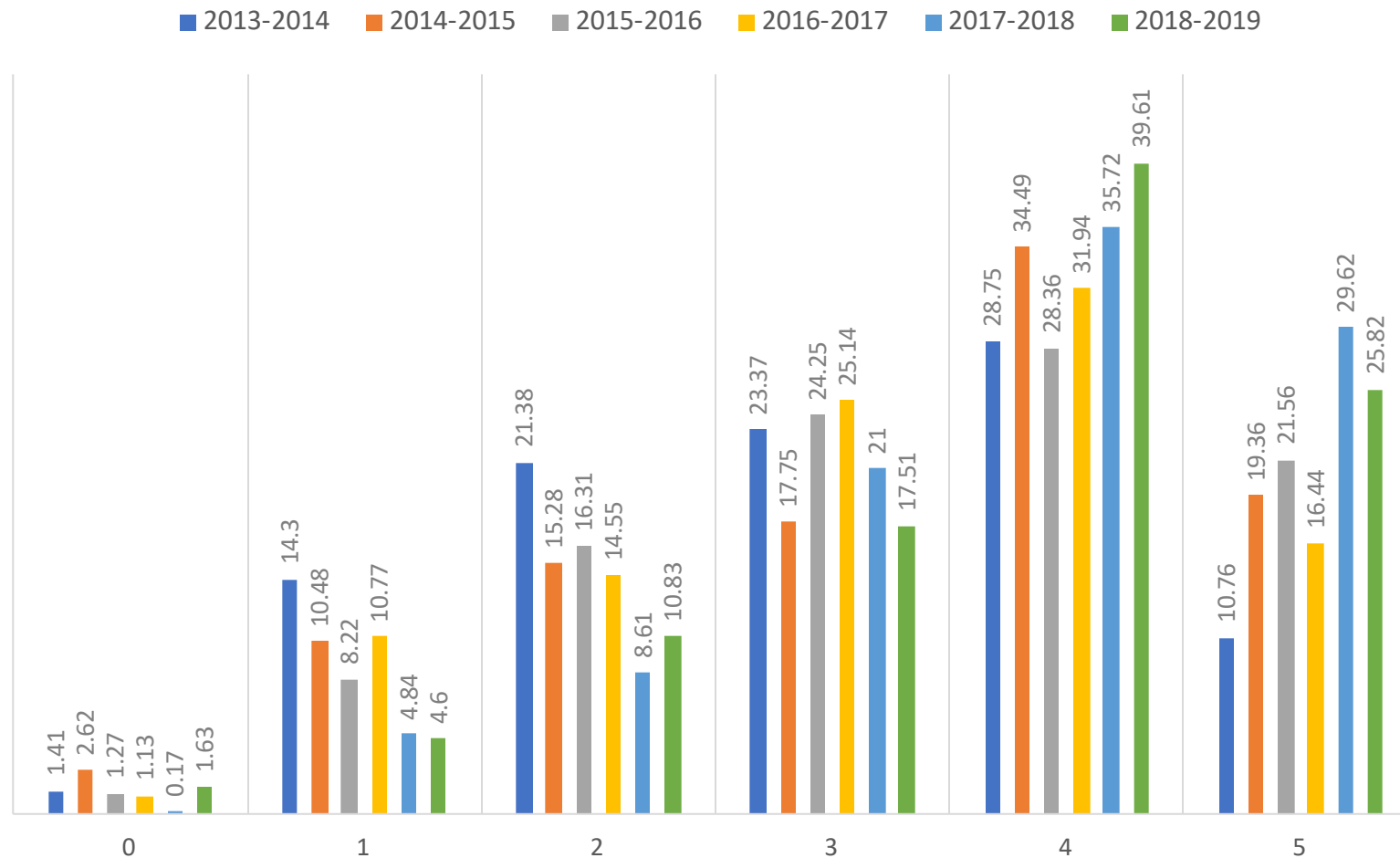
## During the 2018-19 Academic Year, the President Has Been Effective in... ...Building campus infrastructure



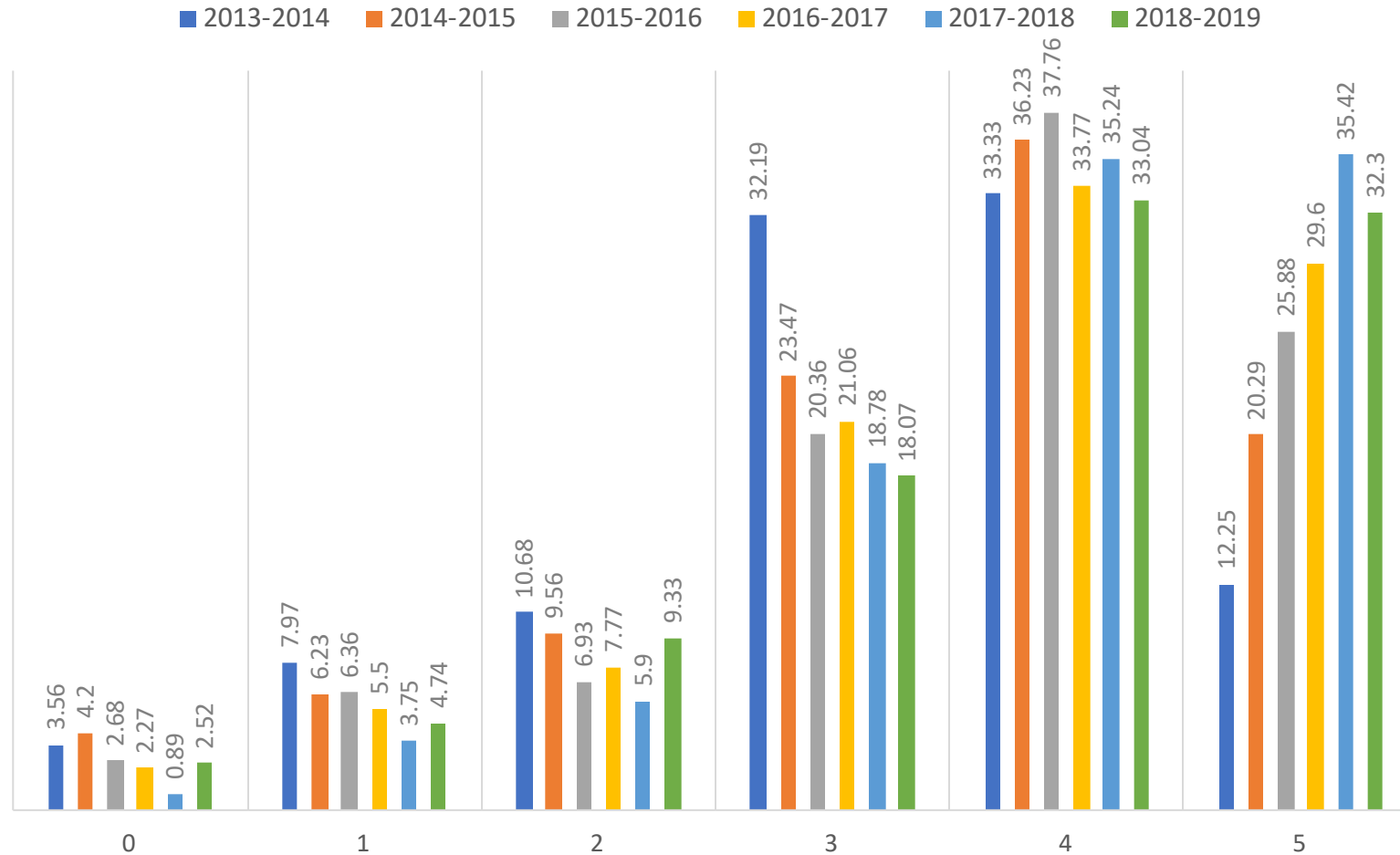
## During the 2018-19 Academic Year, the President Has Been Effective in... ...Building faculty morale



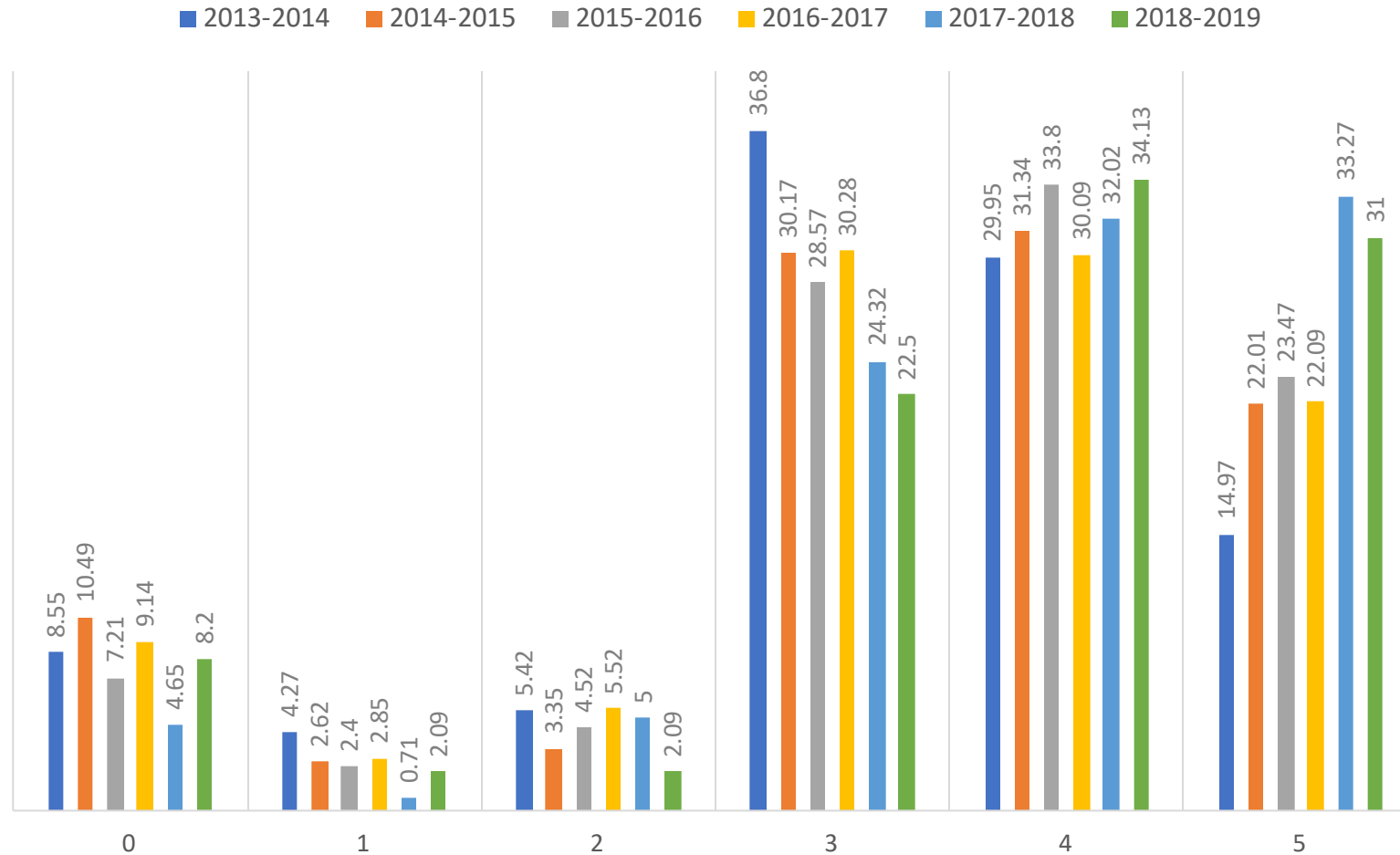
## During the 2018-19 Academic Year, the President Has Been Effective in... ...Fostering confidence in the future of UK



## During the 2018-19 Academic Year, the President Has Been Effective in... ...Fostering a campus environment that is diverse and inclusive

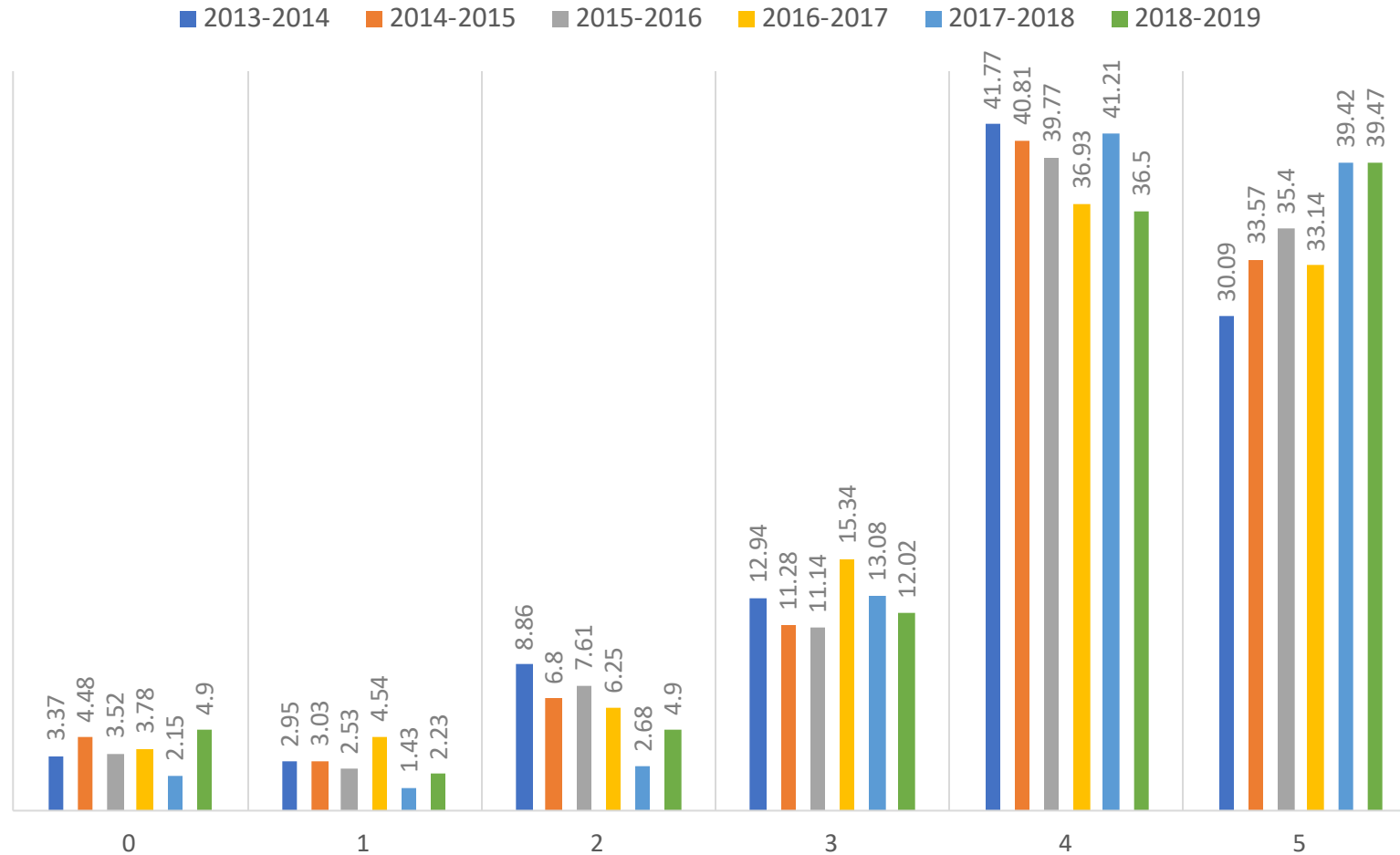


## During the 2018-19 Academic Year, the President Has Been Effective in... ...Maintaining productive relationships with external constituencies

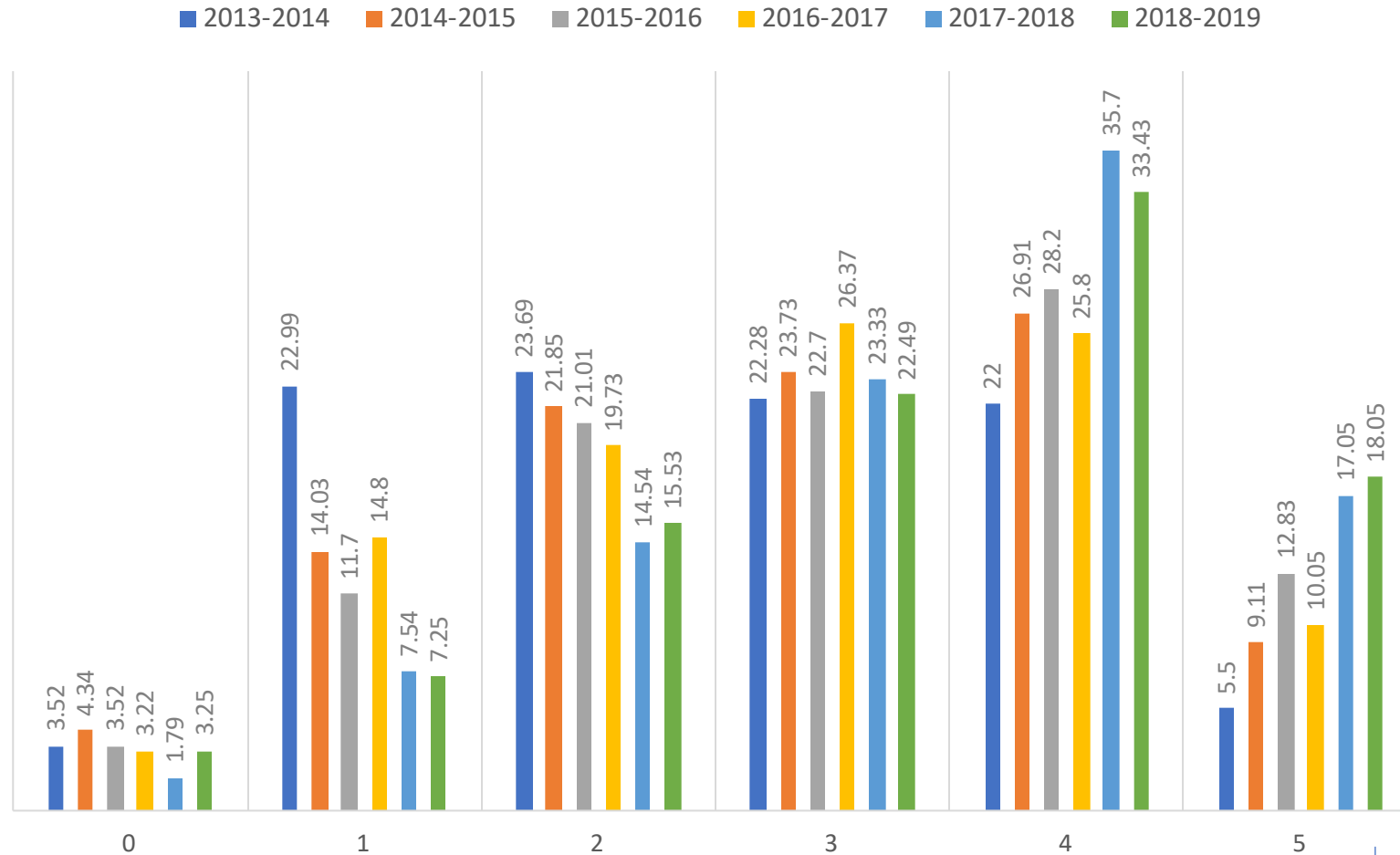




## During the 2018-19 Academic Year, the President Has Been Effective in... ...Supporting undergraduate education

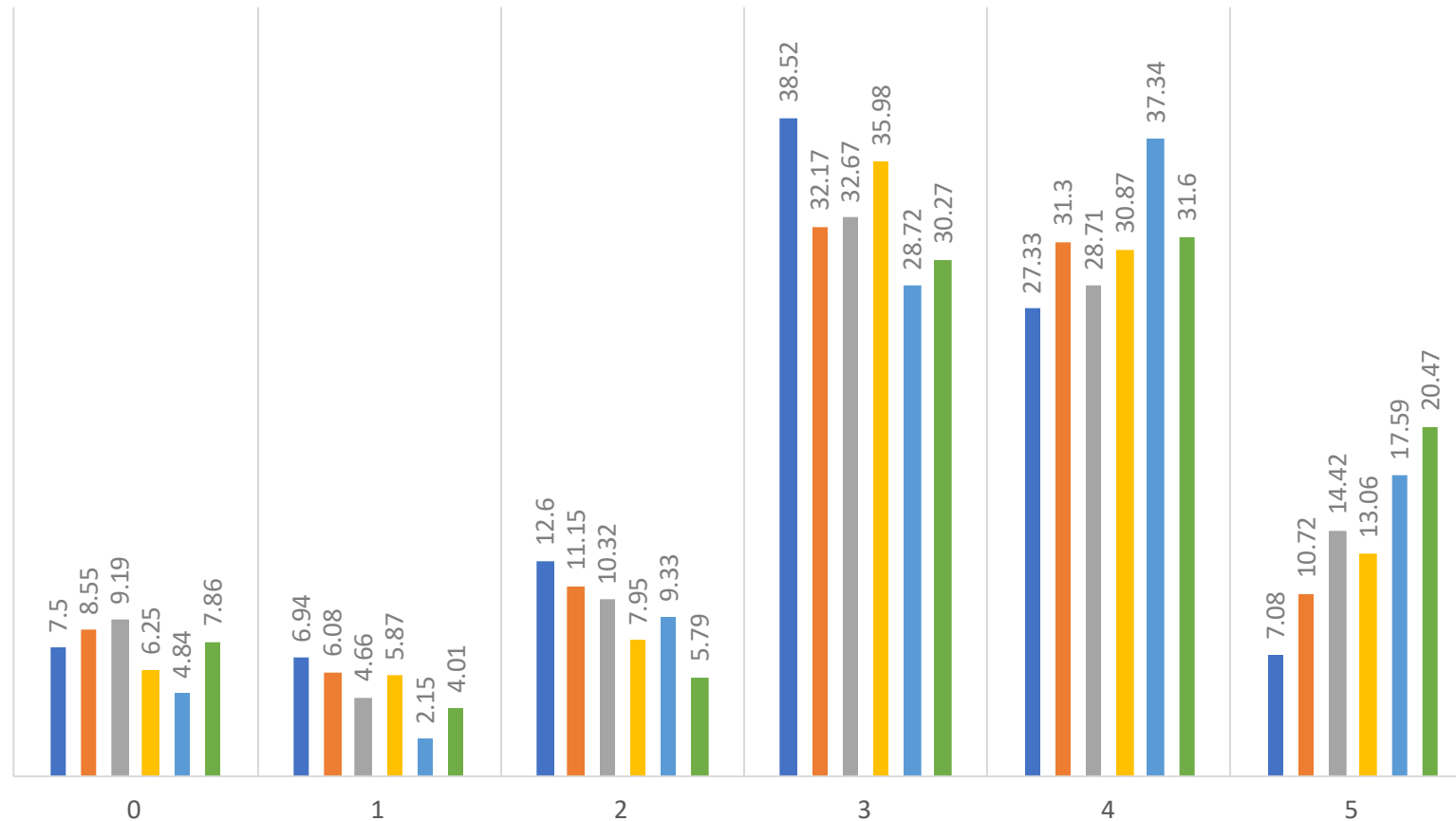


## During the 2018-19 Academic Year, the President Has Been Effective in... ...Supporting graduate education

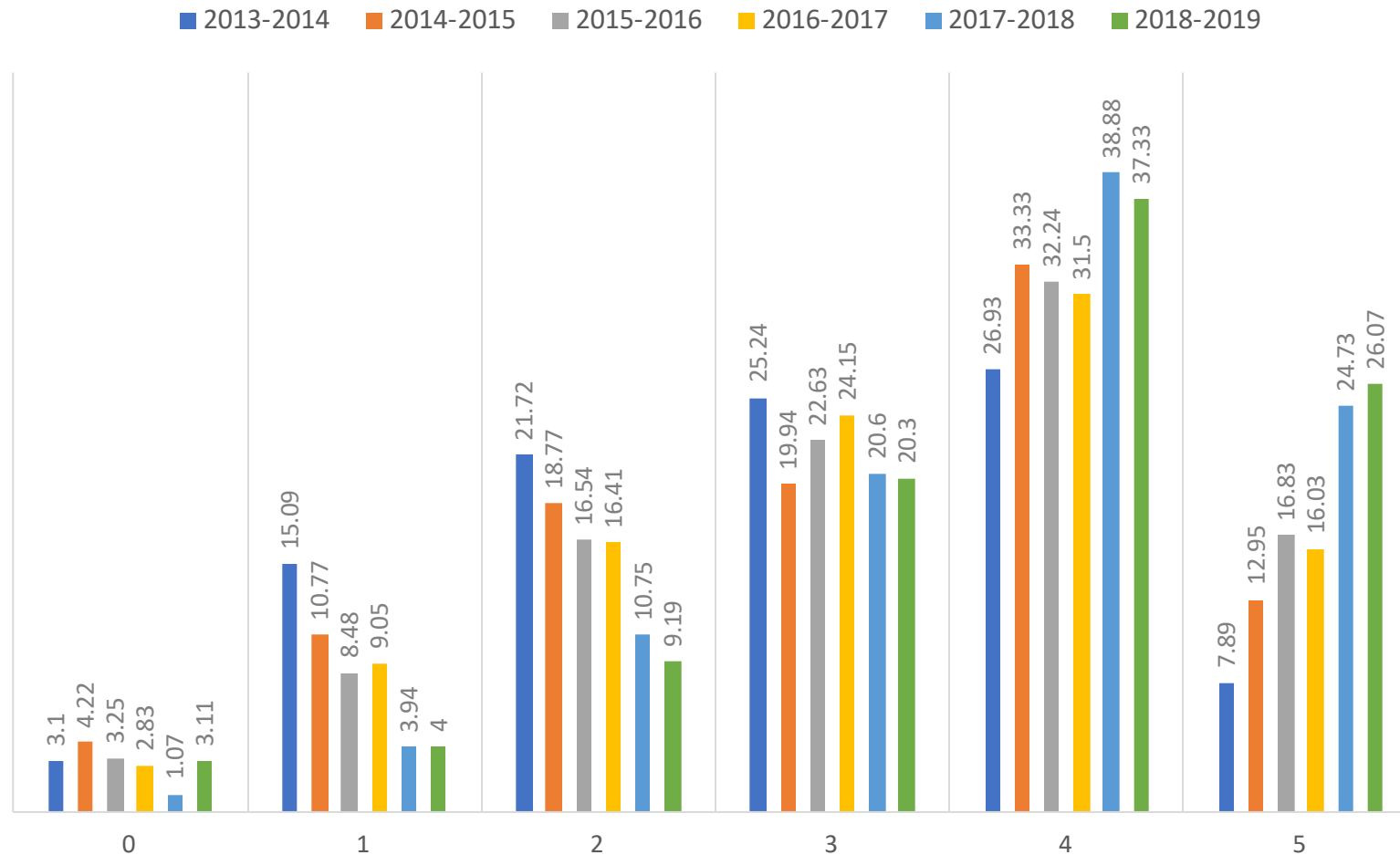


## During the 2018-19 Academic Year, the President Has Been Effective in... ...Supporting professional education

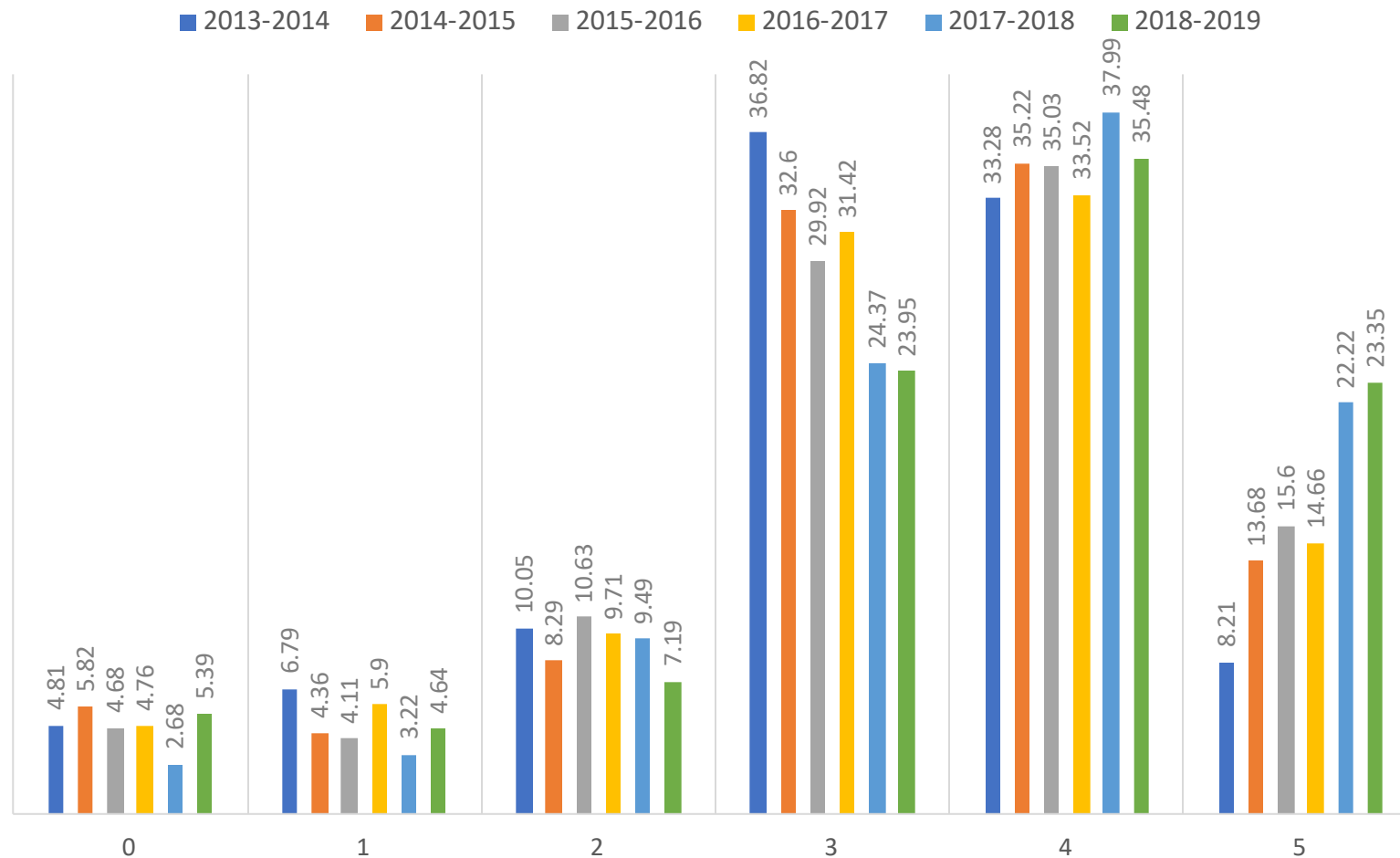
■ 2013-2014 ■ 2014-2015 ■ 2015-2016 ■ 2016-2017 ■ 2017-2018 ■ 2018-2019



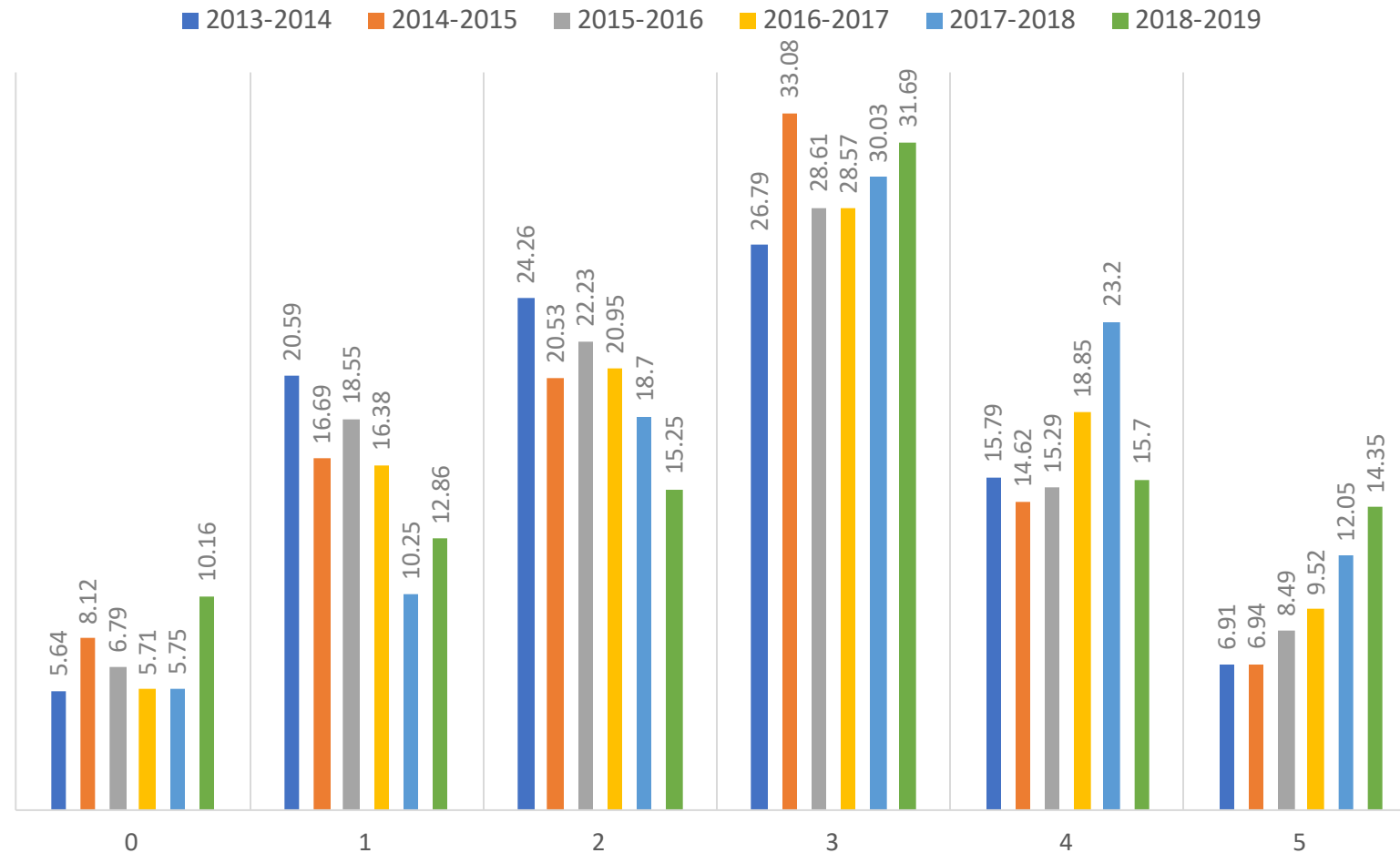
## During the 2018-19 Academic Year, the President Has Been Effective in... ...Supporting the research mission



## During the 2018-19 Academic Year, the President Has Been Effective in... ...Supporting the service mission



## During the 2018-19 Academic Year, the President Has Been Effective in... ...Restructuring the administration to be cost effective



# President Survey

Thank you for reviewing this information.

Questions?

