

Course Substitution for Students with Learning Disabilities to Satisfy the Quantitative Reasoning Core Requirements

University Senate Policy or SUKCEC Guidelines

Spring 2023

Course substitutions to satisfy the UK Core Quantitative Reasoning requirements -- Quantitative Foundation (QFO) and Statistical Inferential Reasoning (SIR) -- will be considered in extraordinary circumstances. Students are strongly encouraged to start the Course Substitution Request process at least one or two semesters prior to the semester in which they plan to take the specific course to fulfill the UK General Education requirement. *Please note that the request for course substitution may not be approved.*

Deadlines for Submitting Course Substitution Requests

<i>Semester Planning to Take a Substitution Course</i>	<i>Request to be Submitted</i>	<i>Appeal Request to be Submitted</i>
Fall	January 15	March 15
Winter	August 30	October 15
Spring	August 30	October 15
Summer	January 15	March 15

Course Substitution Request Process for UK Core Requirements

Students with documented learning disabilities, who wish to request a course substitution for either Quantitative Reasoning (QFO) or Statistical Inferential Reasoning (SIR), must first contact the Disability Resource Center (DRC), and second explore options for course substitution with their academic advisor as well as the Director of Undergraduate Studies (DUS) in their major program. Students must demonstrate that they have already made *good-faith effort* to complete these requirements using one of the Core designated courses. For those with a documented math disability, we highly recommend that students take ***PHI 120: The Art of Thinking: An Introduction to Logic*** to satisfy the UK Core Quantitative Foundation (QFO) requirement.

To request a course substitution, students must submit:

- Course Substitution Request form, which asks a series of questions about their past attempts to satisfy the requirement and the history of consultations with the DRC, course instructor(s), and academic advisor from the major program;
- Letters of support from DRC and their academic advisor; and
- Statement from the instructor of the Core designated course with which the student has attempted for satisfying the Core are requirement.

The requests will be reviewed case-by-case basis by one of three Course Substitution Subcommittees of the Senate UK Core Education Committee (SUKCEC). Membership of the Subcommittee varies depending on the Core area requirement for which students are requesting course substitution.

Quantitative Foundation (QFO) Course Substitution Subcommittee

- Chairs or Chair designates of the Mathematics and Philosophy Departments who are not a member of the SUKCEC,
- QFO Core area expert from the SUKCEC,
- DRC representative, and
- DUS or DUS designate of the student's major program.

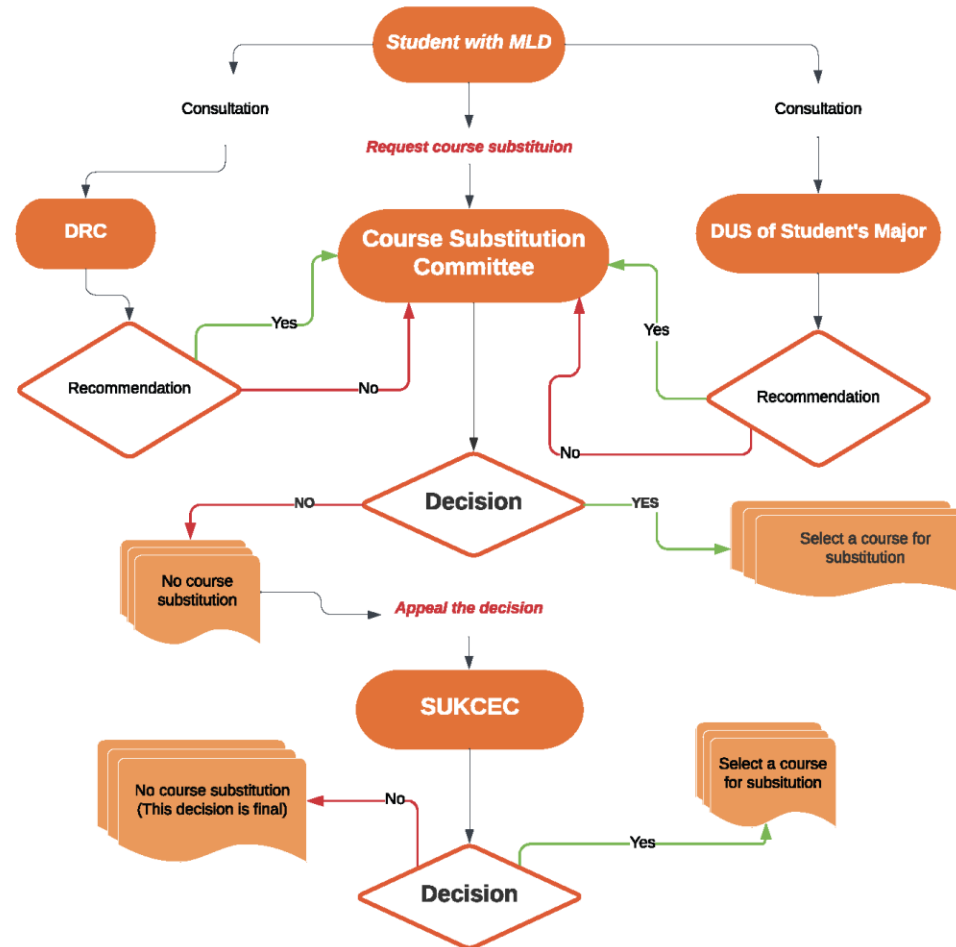
Statistical Inference Reasoning (SIR) Course Substitution Subcommittee

- Chair or Chair designate of the Statistics Department who is not a member of the SUKCEC,
- SIR Core area expert from the SUKCEC
- DRC representative, and
- DUS or DUS designate of the student's major program.

The decision will be communicated to both the student and his/her/their advisor. Students can appeal the decision directly to the SUKCEC. The SUKCEC will function as the appeal body whose decision will be the final. If approved for the course substitution accommodation, students must contact both the academic advisor and the DUS to select a substitution course from the list of approved courses. The DUS must request a course substitution to the College for adjustment on the student's record. Guidelines for course substitution in specific Core areas are delineated below:

Course Substitution Request Process

Tanaka, Keiko | February 21, 2023



Approved Course Substitutions for Each UK Core Area

Quantitative Foundations (QFO)

Students with a documented mathematics disability must first try to take one of non-math courses such as **PHI 120**. Even with the good-faith effort, if their disability inhibits their ability to successfully complete an approved QFO course, students must submit the Course Substitution Request application. If approved, the student's major program can use one of the following courses to satisfy the QFO requirement:

- AEC 101. The Economics of Food and Agriculture
- ECO 101. Contemporary Economic Issues
- CEF/FAM 251 Introduction to Personal and Family Finance
- Or a course which the student's major program strongly recommend as a substitution.

Statistical Inference Reasoning (SIR)

Students with a documented mathematics disability must first try to take one of SIR designated courses such as **STA 210**. Even with the good-faith effort, if their disability inhibits their ability to successfully complete an approved SIR course, students must submit the Course Substitution Request application. If approved, the student's major program can take one of the approved courses from the *Intellectual Inquiry: Natural, Physical, and Mathematical Sciences Core* to satisfy the SIR requirement.